

UC San Diego

EXTENSION INTERNATIONAL PROGRAMS

2019 ENGLISH LANGUAGE PROGRAMS - UNIVERSITY CREDIT PROGRAMS
YOUTH PROGRAMS - CERTIFICATE PROGRAMS - ip.extension.ucsd.edu



WELCOME

WELCOME TO THE UNIVERSITY OF CALIFORNIA SAN DIEGO



Mary Walshok

Associate Vice
Chancellor,
Public Programs
and Dean,
UC San Diego
Extension

UC San Diego enthusiastically welcomes international students. No matter how diverse their backgrounds, our students share one thing in common: an adventurous spirit for learning. They choose UC San Diego because of its worldwide research reputation, its prize-winning faculty, and the innovative character of the San Diego region. In return, they enjoy one of the most valuable educational experiences of their lives. Taught by talented instructors, UC San Diego Extension programs offer the most advanced knowledge and education formats available. Students quickly benefit from immediately applicable information, a wider network of peers, and a more insightful understanding of American culture. In combination with UC San Diego's striking coastal location, our programs are unlike any others in the United States. Welcome . . . we look forward to meeting you.

WELCOME TO UC SAN DIEGO EXTENSION INTERNATIONAL PROGRAMS



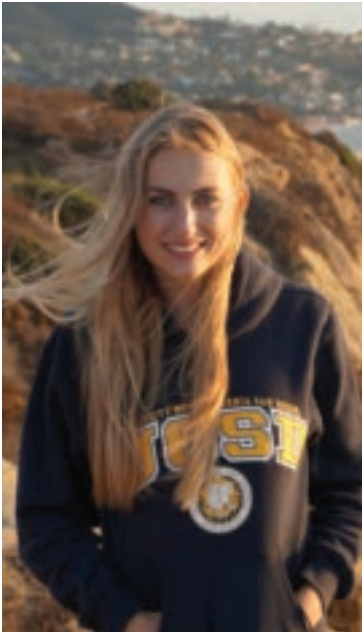
Roxanne Nuhaily

Executive Director
of International
Programs
and Associate Dean
for International and
Academic Affairs
UC San Diego
Extension

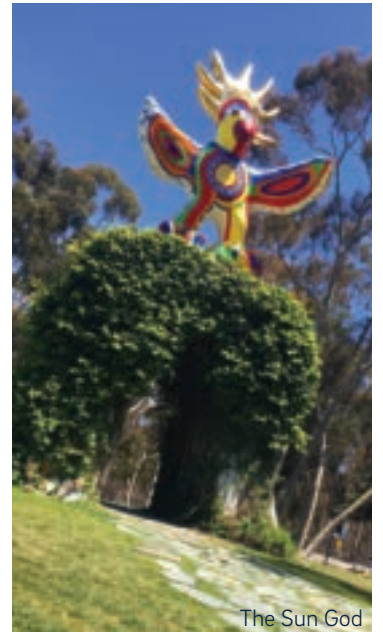
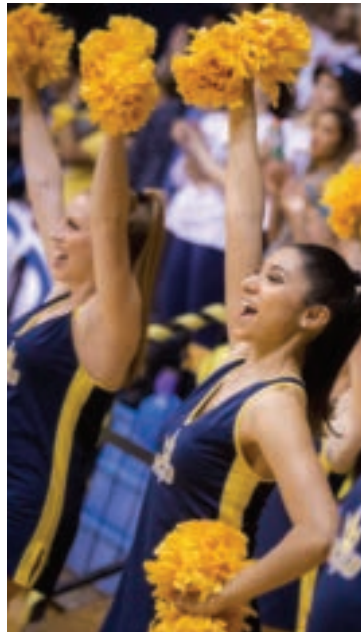
The benefits of an international experience motivate thousands of people to study in the United States every year. As these students seek academic advancement, they also improve their English language skills and intercultural understanding. UC San Diego's commitment to academic excellence is reflected in the high quality of instruction and curriculum in the programs which are described in this brochure. Quality academics, combined with our superb campus facilities, student support services, and idyllic natural surroundings, guarantee the best possible opportunities for your success and satisfaction. The information provided here shows, in pictures and in words, why UC San Diego Extension International Programs is the perfect choice for English language, university credit, and professional programs. We welcome you to UC San Diego and look forward to helping you embark on the experience of a lifetime!



Geisel Library



Triton, the UC San Diego mascot



The Sun God



Jacobs School of Engineering

WHY

WHY CHOOSE UC SAN DIEGO?

A GREAT UNIVERSITY

- Part of the ten-campus University of California system: UC Berkeley, UC Davis, UC Irvine, UC Los Angeles, UC Merced, UC Riverside, UC San Diego, UC San Francisco, UC Santa Barbara, and UC Santa Cruz
- 15th internationally in the 2017 Academic Rankings of World Universities conducted by Shanghai Jiao Tong University in China
- 5th among U.S. universities in total research and development expenditures by the National Science Foundation (NSF)
- 6th in the nation, 2nd among all U.S. public universities, and 14th in the world for total research output by the journal Nature in their 2016 index
- 1st in the U.S. for Positive Impact on the United States by the Washington Monthly College Guide
- A huge campus (over 5 square kilometers) overlooking the Pacific Ocean, with a community of over 36,000 students
- Ranked the top surfing school in the U.S. by Surflife.com

www.ucsd.edu

WHY CHOOSE SAN DIEGO?

A GREAT LOCATION

- "America's Finest City" with a great quality of life
- Population: 1.4 million in the city and 3.3 million in the county
- 100 kilometers of beaches, mountains up to 2,000 meters, and the best climate in the United States, with 263 sunny days per year
- Two San Diego beaches, including La Jolla Shores, were named among the best 25 in the U.S. by TripAdvisor in 2018
- Ranked 2nd most inventive city in the world by Forbes magazine and 1st in the nation in number of patents, with 3.6 patents for every 1,000 workers
- Home to Comic-Con International, one of the largest entertainment and comic conventions in the world, with over 135,000 attendees.
- With 120+ craft breweries, San Diego ranks the 2nd most beer-friendly city in the U.S.
- The largest urban cultural park in the U.S., Balboa Park, is located in the heart of San Diego. The 1,200-acre park is home to 19 museums, botanical gardens, cultural venues, and the San Diego Zoo, which is one of the best zoos in the world.

www.sandiego.org

WHY CHOOSE UC SAN DIEGO EXTENSION?

A GREAT SELECTION OF LANGUAGE, ACADEMIC, AND PROFESSIONAL PROGRAMS

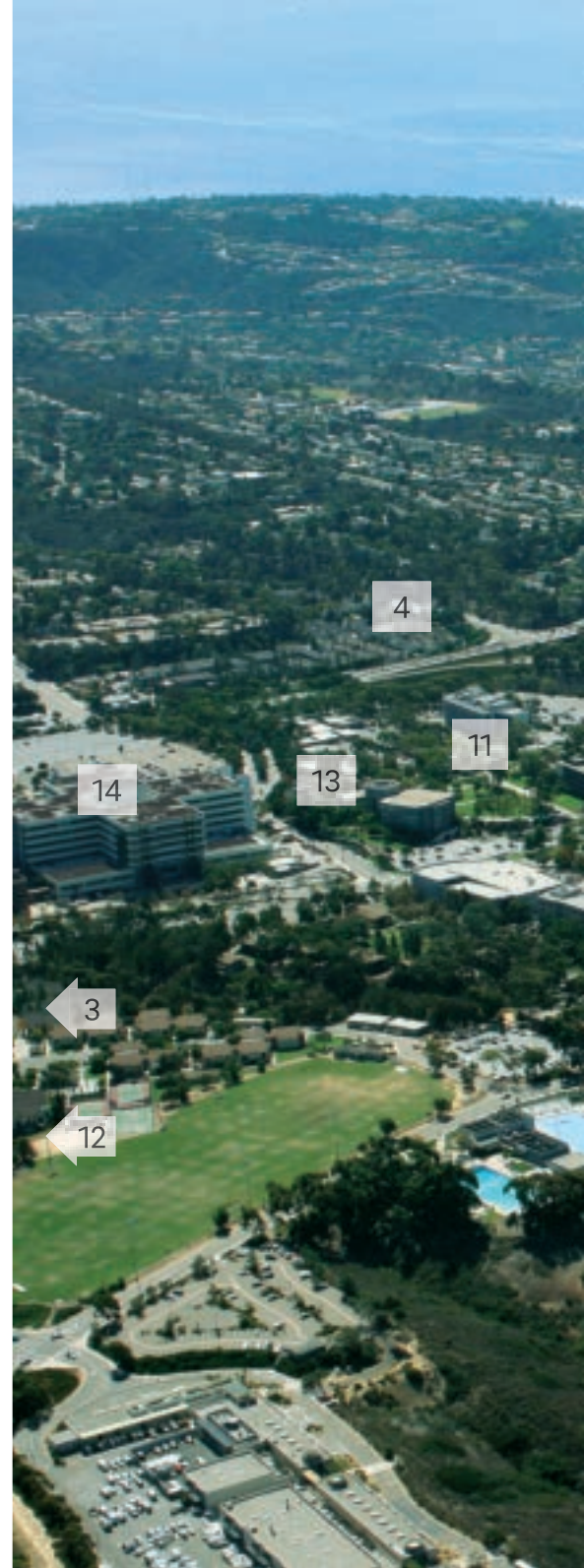
- English language programs for personal and professional development as well as English language preparation for university studies in the U.S.
- University credit programs offering an immense variety of University and University Extension course options at UC San Diego
- Certificate programs for professional growth and the possibility to work in the U.S. through OPT
- Highly experienced International Student Services staff and faculty experts
- Excellent campus location
- Study for as little as two weeks or more!
- Conditional admissions arrangements with several universities and colleges
- Many options for part-time study

ip.extension.ucsd.edu



CAMPUS

1. UC San Diego Extension International Student Services, English Language Institute (ELI) & International Programs ip.extension.ucsd.edu
2. On-campus apartments ip.extension.ucsd.edu
3. Near-campus apartments by Anatolia ac-housing.com
4. Off-campus hotel accommodations by Residence Inn by Marriott La Jolla marriott.com/lajca
5. Price Center bookstore, movie theatre, restaurants, and more UCSandiegobookstore.com
6. Geisel Library libraries.ucsd.edu
7. Scripps Institution of Oceanography scripps.ucsd.edu
8. La Jolla Playhouse lajollaplayhouse.org
9. Rady School of Management rady.ucsd.edu
10. School of Global Policy and Strategy gps.ucsd.edu
11. School of Medicine som.ucsd.edu
12. Thornton Hospital health.ucsd.edu/locations
13. UC San Diego Medical Center health.ucsd.edu/locations
14. La Jolla Veterans Medical Center www.sandiego.va.gov
15. Recreation and Sports Center recreation.ucsd.edu
 - Campus Sports facilities (facilities include three swimming pools, over 20 tennis courts, two running tracks, weight and fitness rooms, basketball, racquetball, sand volleyball courts, baseball, soccer fields, rock-climbing wall, equipment rental)
 - Water sports (including sailing) at Mission Bay Aquatic Center
 - Camping and other outings arranged by Outback Adventures
16. Jacobs School of Engineering jacobsschool.ucsd.edu

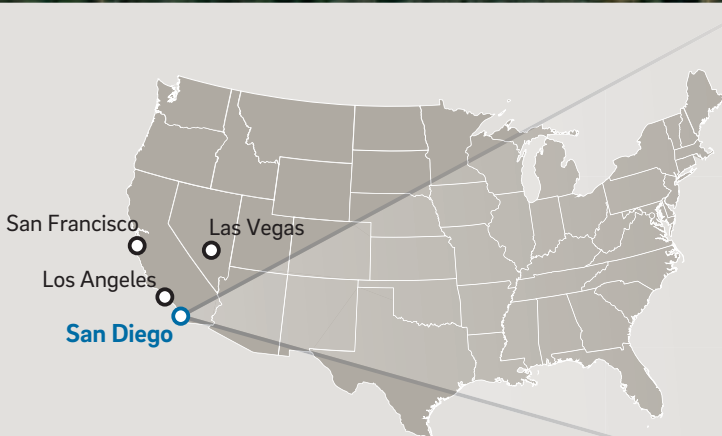


UC SAN DIEGO CAMPUS AND SURROUNDING AREA

The University of California San Diego is located 20 km from downtown San Diego and the San Diego International Airport.

The University of California San Diego is a smoke-free campus.

Apply at ip.extension.ucsd.edu



	AVERAGE °C	
	LOW	HIGH
JANUARY	8.9	18.9
FEBRUARY	10.0	18.9
MARCH	11.1	18.9
APRIL	12.8	20.0
MAY	14.4	20.6
JUNE	16.1	21.7
JULY	18.3	24.4
AUGUST	19.4	25.6
SEPTEMBER	16.6	25.0
OCTOBER	16.0	24.0
NOVEMBER	12.2	21.1
DECEMBER	9.4	19.0



Fallen Star at Jacobs School of Engineering



Scripps Pier



Mayer Hall, Revelle College



UC access road to Black's Beach

Sample schedule for Intensive Communication and Culture program
Schedules vary depending on program and level

elective class required class

TIME	MONDAY	TUESDAY	WEDNESDAY	THURSDAY	FRIDAY
8:30-9:20	Idioms / Slang		Idioms / Slang		Idioms / Slang
9:30-10:20	Writing Skills		Writing Skills		Writing Skills
10:40-12:20	Core 107	Academic Vocabulary	Core 107	Academic Vocabulary	Core 107
12:30-1:20		Grammar		Grammar	
1:30-2:20	Pronunciation & Fluency		Pronunciation & Fluency		
2:30-4:20		American Culture		American Culture	

WHY

WHY CHOOSE UC SAN DIEGO EXTENSION INTERNATIONAL PROGRAMS AND THE UC SAN DIEGO ENGLISH LANGUAGE INSTITUTE (ELI)?

CONVERSATION LEADERS

Conversation Leaders are an integral part of our Conversation classes. Conversation Leaders are American UC San Diego students and members of the community who actively participate in class with our students several hours per week during the program.

Conversation Leaders provide students with the chance to meet and have meaningful interactions with native English speakers. The ELI's expert conversation instructors design and supervise the lessons and conversation activities so that students' time with the Conversation Leaders will have maximum benefit.

CONVERSATION PARTNERS

The UC San Diego English Language Institute provides a list of Conversation Partners to ELI students. Conversation Partners are UC San Diego students and employees who would like to help international students with English conversation in exchange for the opportunity to learn the international student's native language.

Conversation Partners provide students with the chance to share their language and culture with Americans while practicing English outside of the classroom.

UC SAN DIEGO AND UC SAN DIEGO EXTENSION RESOURCES

Students have access to many University and University Extension resources:

- Highly experienced International Student Services staff
- Highly experienced ESL/ university preparation teachers
- State-of-the-art language lab
- Two daytime computer labs: one for personal use and one for class work
- Academic advising, information sessions about the American university system, and a college fair held twice a year.
- Athletic facilities, recreational classes, and two Olympic-size swimming pools
- Wide variety of on-campus dining facilities
- Campus social and cultural activities
- Campus lectures and performances
- UC San Diego Library use
- Organized activities and field trips
- UC San Diego Health Services
- Student Health and Welfare advising
- UC San Diego Thornton Hospital

MISSION STATEMENT OF THE ENGLISH LANGUAGE INSTITUTE (ELI)

It is our mission to provide English language instruction of the highest quality, in which people can learn to their full potential, develop a deeper understanding of the United States, and always receive courteous and knowledgeable service.



CEA ACCREDITED

Our 4-week and long-term ESL programs of the UC San Diego English Language Institute (ELI) are accredited by the Commission on English Language Program Accreditation (CEA). CEA is the only organization that is recognized by the U.S. Department of Education as a national accrediting agency for English language programs and institutions.

APPROXIMATE TEST SCORE RANGES

This chart shows the twelve core proficiency levels, from beginning to very advanced, in ELI's 8-week programs. Placement in ELI's core levels can only be determined by ELI's placement tests upon the student's arrival.

ELI core levels	TOEFL Internet-based (iBT)	TOEFL Paper-based	TOEIC	IELTS
advanced				
110	up to 109	up to 630	up to 990	7.5
109				
108	up to 79	up to 550	up to 760	6.0
107				
106				
105	up to 61	up to 500	up to 625	5.0
104				
103				
102				
101	up to 38	up to 425	up to 450	3.5
100				
99				
beginning				

On average, students move up one core level per session. Exceptional students may sometimes advance two levels.

1 CONVERSATION

- 4-week program offered monthly except April, May, June, and October
- 10 hours per week plus additional field trip time, schedule varies
- **All levels**

This part-time program focuses on building English communication skills and enhancing cultural awareness, with special emphasis on speaking and listening. In addition to field trips, class discussions, pair and group work, presentations, and interactions with Conversation Leaders, students will use their English skills to learn from guest speakers of various fields.

Limited homework

This part-time program does not qualify for an I-20.

Tuition \$1,500 USD

2 CONVERSATION AND FLUENCY

- 4-week program offered monthly except April, May, June, and October
- 15-20 hours per week, schedule varies
- **All levels**

This popular full-time program focuses on building English communication skills and enhancing cultural awareness, as well as accurately using grammar and vocabulary in reading, writing, speaking, and listening. Students will strengthen their ability to use English effectively in everyday situations in and out of the classroom, including reading and writing for school and work. Students practice English through guest speakers, with Conversation Leaders, and during field trips.

Moderate homework

Tuition \$1,800 USD (part-time)
Tuition \$2,000 USD (full-time)

3 UNIVERSITY PREPARATION ACADEMY

- 4-week program offered June, July, August, and September
- 20 hours per week, schedule varies
- **Advanced students**

The UPA program prepares students to enter master's degree programs in highly selective and competitive American universities.

University preparation classes may include:

- University Advising
- Paraphrasing and Summarizing Skills
- Critical Analysis and Discussion
- Synthesis and Critical Response
- Discussion and Fluency for University Success
- University Lecture and Note-taking Skills

Concentrated academic skills classes may include:

- Academic Reading and Writing
- Public Speaking Skills
- Advanced Vocabulary Skills
- Advanced Grammar Skills

Courses are offered on a rotational basis depending on the quarter when a student enters the program. ELI reserves the right to make changes to the program and course offerings depending on total enrollments and student needs.

Substantial homework

Tuition \$2,300 USD

4 BUSINESS ENGLISH

- 4-week program offered March, July, and August
- 15-25 hours per week, schedule varies
- **High-intermediate and advanced students***

This intensive program is for students and professionals who want to increase their English fluency through business content studies. Business English focuses on meeting and negotiating skills, case studies, business vocabulary, and business writing. Guest speakers and company visits vary according to availability.

Topics may include:

- American business
- Management
- Marketing
- Finance
- International trade
- Human resources

Substantial homework

Tuition \$2,050 USD (part-time)
Tuition \$2,300 USD (full-time)

5 LEGAL ENGLISH FOR BUSINESS

- 4-week program offered July, August, and September
- 15-20 hours per week, schedule varies
- **High-intermediate and advanced students***

This intensive program is for students and professionals who are studying or working in business or law-related fields, and who would like to gain a better understanding of American business law practices. Students will master legal and business vocabulary expressions for speaking and writing. They will also focus on skills for various business law scenarios such as writing legal correspondence, interviewing a client, and negotiating an agreement. This program features expert guest speakers according to availability. This program does not prepare students for LLM degree programs.

Topics may include:

- Company law
- Contracts and contract formation
- Real property law
- Transnational commercial law
- Consumer protection
- Intellectual property
- Alternative dispute resolution
- Employment law
- Competition law

Substantial homework

Tuition \$2,050 USD (part-time)
Tuition \$2,300 USD (full-time)

ANDRE BERNARDI BRAZIL

I had an incredible time. I expected to study English, but after arriving at UC San Diego, I realized that I would do so much more. In my free time at UC San Diego, I attended lectures on many subjects—Business, Health, Research, Entrepreneurism, and History. In addition, I enjoyed the ambience of the great library, took walks on campus, and made educational trips around San Diego. It was a complete experience.



6 ENGLISH FOR ENGINEERING AND TECHNOLOGY

- 4-week program offered January, February, March, July, and August
- 15-20 hours per week, schedule varies
- **High-intermediate and advanced students***

This program is for students studying a field of engineering or computer science who wish to improve their ability to effectively communicate in scientific discussion. Students will master specific engineering and technology vocabulary and improve their technical writing skills.

Topics may include:

- Renewable energy
- Digital information
- Satellite communication
- Biomedical engineering
- Aerial robotics
- Artificial intelligence
- Mechanical design
- Manufacturing
- Design materials
- Computer software engineering
- Technical writing

Substantial homework

Tuition \$2,300 USD (part-time)
Tuition \$2,600 USD (full-time)

7 ENGLISH FOR PHARMACEUTICAL SCIENCES

- 4-week program offered February, July, and August
- 15-20 hours per week, schedule varies
- **High-intermediate and advanced students***

This program is for students and professionals who want to increase their English fluency while focusing on pharmaceutical and pharmacy topics. The focus is on improving students' writing and spoken communication skills, with an emphasis on technical writing, public speaking, special terminology, and communicating effectively in pharmacies and other healthcare settings. Participants must have previously taken an anatomy or physiology course.

Topics may include:

- Technical writing and notation for pharmaceutical work
- Presentation skills for academic and professional settings
- U.S. drug development and approval process
- U.S. drug delivery systems and practices
- The language of pharmacist-patient interaction
- Idiomatic language in pharmacy settings/ pharmaceutical studies
- Readings and discussion on pharmaceutical topics

San Diego is one of the strongest regions in the U.S. for biomedical and pharmaceutical research and development. This program features expert guest speakers according to availability.

Substantial homework

Tuition \$2,300 USD (part-time)
Tuition \$2,600 USD (full-time)

8 MEDICAL ENGLISH

- 4-week program offered January, July, and August
- 15-20 hours per week, schedule varies
- **High-intermediate and advanced students***

This program is for students and professionals who want to master medical terminology and increase English fluency within a clinical context. Participants must have previously taken an anatomy or physiology course.

Topics may include:

- U.S. healthcare delivery system
- The language of patient interaction
- Human anatomy and physiology
- Medical history-taking
- Trauma and emergency care
- Diagnostic and treatment procedures
- Development of presentation skills

UC San Diego is a major center for medical research and healthcare development. This program features expert guest speakers according to availability.

Due to visitation restrictions and patient privacy laws, we do not guarantee visits to hospitals and clinics nor observations of actual medical procedures as part of the Medical English program.

Substantial homework

Tuition \$2,300 USD (part-time)
Tuition \$2,600 USD (full-time)

9 ACADEMIC ENGLISH (2-WEEK and 4-WEEK)

- 2-week program with start dates every two weeks
- 4-week program offered monthly
- 15-20 hours per week, schedule varies
- **High-intermediate and advanced students***

Classes focus on developing fluency and accuracy in all language skills for academic and professional purposes. Considerable time will be spent on grammar, reading, writing, and oral discussion. Students will take part in class lectures, group work, pair work, and individual study. In addition to a homeroom academic skills class, students will have one or two additional courses.

Additional courses may include:

- Listening and discussion
- Oral presentations
- Pronunciation and fluency
- Vocabulary development
- TOEFL iBT preparation
- Conversation

Substantial homework

Tuition \$1,000 USD (2-wk part-time)
Tuition \$1,200 USD (2-wk full-time)
Tuition \$1,800 USD (4-wk part-time)
Tuition \$2,000 USD (4-wk full-time)

ADVISORY ABOUT VARIABLE ENROLLMENTS

Enrollment numbers in our Conversation and Conversation and Fluency programs vary greatly from month to month. If our placement tests indicate that a student's English proficiency level does not permit placement in the original 2-week or 4-week program, we may place the student in 2 weeks or 4 weeks of study in a corresponding 8-week program, or we may provide a combination of classes to ensure the full number of hours of the original program. Alternatively, we may decide to place all 2-week or 4-week program

students in level-appropriate classes in a corresponding 8-week program of 20, 15, or 10 hours per week for 2 or 4 weeks. When this happens, the 2-week or 4-week program will have the features described for the new 8-week program, not the features described for the original program. The hours, tuition, and fees for the students' 2-week or 4-week program will remain the same.

*ADVISORY ABOUT LEVEL REQUIREMENTS

Only students who test into high-intermediate and advanced levels on UC San Diego-ELI placement exams will be accepted into the 2- and 4-week

Academic English, Business English, English for Engineering and Technology, English for Pharmaceutical Sciences, Legal English for Business, and Medical English programs. This level requirement corresponds to a minimum score of approximately 60 on the TOEFL iBT, 5.0 on the IELTS, or 160 on the Cambridge Exam: First (FCE).

Students who do not qualify for the English language programs stated above will be transferred to Conversation and Fluency. In April, May, June, and October, when Conversation and Fluency is not offered, students testing lower than high-intermediate will receive a combination of

classes to ensure a full-time program of 20 hours per week for four weeks (or 15 hours per week if studying part-time).

Students who do not qualify for full participation in the Academic English program will be scheduled for private or semi-private instruction with ELI teachers as needed for an additional fee of \$300 USD per 2-week session or \$600 USD per 4-week session.

An online placement predictor is available to estimate program eligibility. However, it does not guarantee eligibility.

10 COMMUNICATION AND CULTURE

- 8-week program
- 20 hours per week
- **All levels (ELI core levels 99-110)**

- Core classes for fluency and comprehension
- Everyday speaking and understanding
- Focus on American society and culture

Elective classes may include:

- Listening through TV and Music
- American Music
- American Film
- TOEFL Test Preparation
- TOEIC Test Preparation
- Idioms and Slang
- Everyday English
- American Culture
- Phrasal Verbs
- Vocabulary Development
- Conversation
- Reading and Writing
- Current Events
- Oral Presentations

Tuition \$3,100 USD

11 INTENSIVE COMMUNICATION AND CULTURE

- 8-week program
- 25 hours per week
- **All levels (ELI core levels 99-110)**

- Required core class
 - focused on grammar (ELI core levels 99-103)
 - focused on fluency (ELI core levels 104-110)
- Required class
 - focused on listening (ELI core levels 99-103)
 - focused on grammar (ELI core levels 104 -110)

Elective classes may include:

- Conversation
- Discussion through Film
- Everyday English
- Fluency and Pronunciation
- Idioms and Slang
- Phrasal Verbs
- Practical Communication Skills
- Public Speaking and Presentations
- TOEFL Test Preparation
- TOEIC Test Preparation
- University Study Skills
- Vocabulary Development

Tuition \$3,500 USD

12 INTENSIVE ACADEMIC ENGLISH

- 8-week program
- 25 hours per week
- **All levels (ELI core levels 99-110)**

- Required core class
 - focused on grammar and fluency (ELI core levels 99-104)
 - focused on writing and fluency (ELI core levels 105-107)
 - focused on reading, writing, and fluency (ELI core levels 108-110)
- Required class
 - focused on listening (ELI core levels 99-103)
 - focused on grammar (ELI core levels 104-110)

Elective classes may include:

- Academic Listening and Note-taking
- Academic Vocabulary Development
- Academic Writing Skills
- Fluency and Presentation Skills
- Grammar and Editing
- Oral Presentations
- Pronunciation and Fluency
- University Study Skills and Academic Preparation
- TOEFL Test Preparation
- High-intermediate/advanced American Business Studies

Tuition \$3,500 USD

13 INTENSIVE TOEFL PREPARATION

- 8-week program
- 25 hours per week
- **High-intermediate to advanced levels only (ELI core levels 105-110)**

- Required courses include:
 - TOEFL iBT preparation
 - Integrated Skills Tasks
 - Writing and Speaking
 - Independent Skills Tasks
 - Writing, Speaking, and Listening
 - Reading and Vocabulary
- Required core class focused on fluency
- Required grammar course
- Elective course focused on vocabulary development. Elective options available upon arrival.

The ELI offers an Institutional TOEFL (paper-based) test for an additional fee of \$75 (price subject to change).

The internet-based (iBT) TOEFL is available at several official testing sites in San Diego for an additional fee of \$140 (price subject to change).

Note: This program can be taken only two times in levels 105-110. Students who place into our intermediate levels (ELI core levels 103-104) may take TOEFL or IELTS test preparation classes in other programs.

Tuition \$3,500 USD

14 INTENSIVE IELTS PREPARATION

- 8-week program
- 25 hours per week
- **High-intermediate to advanced levels only (ELI core levels 105-110)**

- **ELI levels 105-107 include:**
 - Required IELTS preparation courses
 - IELTS Speaking and Vocabulary Preparation
 - IELTS Listening Skills
 - IELTS Reading and Writing Preparation
 - Fluency-based elective for 3-hours each week

- **ELI levels 108-110 include:**
 - Required IELTS preparation courses
 - IELTS Listening Skills
 - IELTS Speaking and Vocabulary Preparation
 - IELTS Reading Preparation
 - IELTS Writing Preparation

- **Required classes for ELI levels 105-110 include:**
 - Core class focused on fluency
 - Grammar
 - Vocabulary elective class may include:
 - Academic Vocabulary
 - Idioms for Business
 - Vocabulary for Business and Finance

Note: This program can be taken only two times in levels 105 -110.

Tuition \$3,500 USD

**JUYEON JEONG
SOUTH KOREA**

I genuinely enjoyed going to class every day because of the devoted, professional teachers and my friendly, passionate classmates. I also loved to spend my time at Geisel Library on the campus. Surrounded by hard-working students and the cheerful academic environment of the library motivated me to study harder. But, the most special experience has been the volunteer activities that Academic English Through Service Learning offered. I was able to go to different areas of San Diego, help the community, and interact with different types of people, which allowed me to speak more confidently as well as deeply experience U.S. culture.



15 ACADEMIC ENGLISH THROUGH SERVICE-LEARNING

- 8-week program
- 25 hours per week
- **High-intermediate to advanced levels only (ELI core levels 107-110)**
- In addition to working on their academic English skills, students in this program will increase their English fluency through civic engagement in community volunteer activities.
- Required Service-Learning core class focuses on the following topics:
 - Education
 - Civic life
 - Social justice
 - Critical thinking and problem-solving
 - Preparation for volunteer projects
- Required on-site volunteering with community partners in San Diego focuses on important social causes such as:
 - At-risk youth populations
 - Education and youth tutoring
 - Environmental advocacy
 - Homeless support
 - Hunger relief
- Required Grammar class (ELI core levels 107-110)
- Required Reading class (ELI core level 107 only)
- High-intermediate to advanced elective classes may include:
 - Academic Essay Writing skills
 - Academic Vocabulary Development
 - Discussion through Current Events
 - Grammar and Editing
 - Listening skills
 - Oral Presentations
 - Pronunciation and Fluency
 - Test Preparation courses: TOEFL, TOEIC, or IELTS

Tuition \$3,500 USD

16 INTENSIVE BUSINESS ENGLISH

- 8-week program
- 25 hours per week
- **Advanced levels only (ELI core levels 108-110), as determined by the UC San Diego-ELI placement tests.**
- Required core class, American Business Studies
- Required Business Writing class
- Required Case Studies in Business class
- Required Business Reading and Discussion class
- Required Grammar class
- **Advanced elective classes may include:**
 - Academic Listening and Note-taking
 - Conversation
 - Idioms for Business
 - Language for Business and Finance
 - Negotiation and Debate
 - Presentations for Business
 - Test preparations: TOEFL, IELTS, or TOEIC
 - Vocabulary for Business and Finance

Note:

This is primarily an English language program focused on business topics and career skills development.

This program can be taken two times in levels 108-110.

Tuition \$3,800 USD

17 INTENSIVE LEGAL ENGLISH

- 8-week program
- 25 hours per week
- **Advanced levels only (ELI core levels 108-110), as determined by the UCSD-ELI placement tests.**
- Required Advanced Legal English course includes the following topics:
 - An introduction to or a review of the U.S. legal system
 - The court system and trial procedures
 - Landmark cases
 - Social/cultural trends that affect the law
- Required Grammar class
- **Elective classes may include:**
 - Advanced Case Studies in Business, Academic Writing, Business Presentation Skills, Business Reading and Discussion, Conversation, Idioms for Business, Negotiations and Debate, Oral Presentations, Vocabulary for Business and Finance, and Test preparation: TOEFL, IELTS, or TOEIC

The Advanced Legal English course is taught by highly skilled English instructors with a keen interest in law and a master's in linguistics, TEFL, or related field. The program also includes guest lectures by legal scholars and practicing attorneys, excursions to the courthouse, and directed studies in law.

- This program provides relevant preparation for the LLM degree programs or your practice of law. Students who complete this program with strong grades and references from all ELI instructors may be eligible for conditional admission to California Western School of Law, the University of San Diego School of Law, or Thomas Jefferson School of Law.

Applicants must submit the following with their program application:

- Academic transcripts for the four most recent semesters (showing previous studies in Western law or Western civilization)
- A brief statement explaining previous law related experience and purpose for taking this program
- For guaranteed enrollment in Intensive Legal English,

students must provide one of the following: 85 on the TOEFL iBT, 7.0 on the IELTS, or a "pass" on the CAE or the CPE (Cambridge Exams).

-Interested students coming directly from UC San Diego Extension's ELI 8-week programs should meet with the ELI Academic Advisor for specific continuing student requirements.

Note:

- **This program can only be taken one time.**
- **All students will take placement tests upon arrival and must place into level 108-110 with minimum required reading and writing scores.**

Tuition \$4,000 USD

IMPORTANT NOTES:

Classes offered for core levels 99 and 100 will run depending on the number of students enrolled in these levels. If there is an insufficient number of students at these levels, students may be transferred to another ELI program where they can receive beginner-level instruction. In order to participate in core level 99, students must have basic familiarity with English, including mastery of the English alphabet and the ability to produce and understand simple sentences and questions, both verbal and written. Students who do not qualify for level 99 are considered "true beginners." Group classes are not offered for true beginners, but private or semi-private classes are available for an additional \$1,200 USD.

Not all elective courses are offered in every session or at every level. The elective courses offered depend on the students' levels and sufficient enrollments in the courses. UC San Diego-ELI reserves the right to determine all issues related to a student's program or level placement. Decisions on ELI courses and programs depend on staffing needs/availability and resource allocation.

SPECIAL NOTE:

Students who enroll in the Intensive Business English and Legal English programs must arrive for the first day of the published program start-date. Due to planning requirements, we cannot accept late arrivals for these programs. Students who do not arrive for the first day of the published program start-date will lose their space and will automatically be transferred to the Intensive Academic English Program for the session.

18 ACADEMIC CONNECTIONS INTERNATIONAL

Academic Connections International (ACI) is a 3-week summer UC San Diego academic and residential immersion program for international secondary students who are 16-18 years of age and have advanced English proficiency.

Students enroll in one course to explore a particular topic in depth. In addition to a challenging and active learning experience, social and recreational activities are planned for the afternoons and on weekends.

This program is for students with strong academic records and advanced English proficiency who would like to have an insightful American pre-university experience along with American teenagers.

Program Features:

- On-campus housing with American students for three weeks, including breakfast, lunch, and dinner at campus dining halls
- UC San Diego academic instruction and activities
- Project supplies and access to laboratory equipment as part of classwork
- An opportunity to take various chaperoned field trips to local sites
- Constant adult supervision
- Guest speakers

Example courses include:

- Animal CSI: Virus Hunters
- Body Language: How Cells Use Hormones to Communicate
- Critical Thinking
- Experiments in Music Composition Theory
- Introduction to Microeconomics
- Foundations of Creative Writing
- Innovative Writing across Media: An Introduction to the College Workshop
- Introduction to Bioinformatics
- Introduction to Cognitive Science
- Introduction to Fluid Mechanical Engineering: From a Straw to an Airplane
- Introduction to Mechanical Engineering and Materials Science
- Language and Identity for Bilingual Writers
- Media Matters: Stereotypes and Social Change in Popular Media
- Neuroscience: From Brains to Behaviors
- Scripps Institution of Oceanography: Introduction to Marine Biology
- Scripps Institution of Oceanography: Marine Invertebrates
- Scripps Institution of Oceanography: Introduction to Microbiology

Courses for Academic Connections 2019 will be posted on our website in February 2019.

For more information, please contact ipinfo@ucsd.edu

Tuition \$6,300 USD

ESL YOUTH PROGRAMS

ESL Youth Programs are 2-week summer UC San Diego English language immersion programs for international secondary students who are 15-17 years of age and have intermediate to advanced English proficiency.

Program Features:

- On-campus housing for two weeks, including breakfast, lunch, and dinner at campus dining halls
- UC San Diego English language and academic instruction and activities
- All instructional materials
- An opportunity to take various chaperoned field trips to local sites
- Constant adult supervision
- Guest speakers

19 LEADERSHIP AND ENTREPRENEURSHIP

This program is for students who want to focus on improving their speaking fluency and listening comprehension while learning about leadership and entrepreneurship topics and activities.

Program Features:

- Focus on leadership skills, innovation and entrepreneurship in American culture
- Emphasis on learning by doing
- Limited homework (most learning done in class and during scheduled activities)
- Constant adult supervision
- Guest speakers
- On-campus housing

Tuition \$4,900 USD

20 AMERICAN UNIVERSITY EXPERIENCE

This program is for students who prefer a more academically-oriented program. They will improve their writing and academic discussion skills, develop a better understanding of U.S. academic culture, and prepare for admission to and success in an undergraduate degree program.

Program Features:

- Focus on academic skill-building, especially academic writing and speaking skills
- Emphasis on research skills and critical thinking skills
- Workshops on the U.S. higher education system
- U.S. college admission advising, including UC San Diego admissions requirements
- Discussions with UC San Diego students about the challenges they face in their studies and how they deal with them
- Educational and cultural field trips
- Visit college campuses in Southern California
- Considerable homework to enhance academic skills development
- Constant adult supervision
- Guest speakers
- On-campus housing

For more information, please contact ipinfo@ucsd.edu

Tuition \$4,900 USD

YOUTH PROGRAMS ADMISSION REQUIREMENTS

ACADEMIC CONNECTIONS INTERNATIONAL	ACI Requirements:	ESL YOUTH PROGRAMS	ESL Youth Program Requirements:
Advanced English equivalent to:	<ul style="list-style-type: none"> • Completed ACI application found on website plus all required documents • ACI does not qualify for the Form I-20. 	Intermediate English equivalent to:	<ul style="list-style-type: none"> • Completed International Programs application plus supplemental documents found on website for ESL Youth Programs • These programs do not qualify for the Form I-20.
• TOEFL iBT: 80		• TOEFL iBT: 57	
• IELTS: 7.0		• IELTS: 5.5	
• Advanced Cambridge: Pass		• Cambridge FCE: Pass	
• EIKEN Grade: 1		• EIKEN Grade: 2	
• CEFR: C1		• CEFR: B1	



21 UNIVERSITY AND PROFESSIONAL STUDIES

The University and Professional Studies program provides a flexible study abroad opportunity for academically excellent students and professionals. Universities in many countries count these credits towards their own bachelor's or master's degree programs. Transferability is at the discretion of the home university and must be verified in advance by the student.

Program Features:

- 12-week program
- Official transcript of UC San Diego or UC San Diego Extension grades – credit may be transferable to another college or university in the U.S. or your home country
- Regular academic advising sessions
- Students must achieve above-average final grades in all coursework (“B” or better).
- In the fall, winter, and spring quarters, UPS students take a full-time program (12 units) consisting of UC San Diego and/or UC San Diego Extension courses.

The following are some of the departments and course topics that UPS students have enrolled in:

- Anthropology**
- Bioengineering**
 - Biotechnology
 - Bioinformatics
- Biology**
 - Biochemistry and Cell
 - Ecology, Behavior & Evolution
 - Human Biology
 - Microbiology
 - Molecular Biology
 - Physiology and Neuroscience
- Chemistry**
 - Chemical Education
 - Chemical Physics
 - Environmental Chemistry
 - Molecular Synthesis Cognitive
- Science**
 - Clinical Aspects of Cognition
 - Computation
 - Human Cognition
 - Human Computer Interaction
 - Neuroscience
- Computer Science**
- Economics**
- Engineering**
 - Aerospace Engineering
 - Computer Engineering
 - Electrical Engineering
 - Engineering Physics
 - Mechanical Engineering
 - Nanoengineering
 - Structural Engineering
- Global Policy and Strategy**
- History**
- Linguistics**
- Literature**
- Mathematics**
- Music***

- Philosophy**
- Physics**
- Political Science**
- Psychology**
- Rady School of Management*** (undergraduate only)
 - Accounting
 - Organizational Leadership
 - Global Business Strategy
 - Business Ethics & Corporate Responsibility
 - Enterprise Finance
 - Financial Investments
- Scripps Institution of Oceanography**
 - Geology
 - Geochemistry
 - Geophysics
- Sociology**
- Theatre and Dance**
- Visual Arts**
- UC San Diego Extension courses** (many academic areas) **and many more...**

Enrollment is on a space-available basis

Enrollment in all classes is on a space-available basis and requires instructor and/or departmental approval after the student arrives. If there are no available spaces, the instructor may require that the student wait for several days to see if any other students drop the class before enrolling a UPS student. Many class enrollments are not confirmed and completed until the second or third week of the quarter. It is especially difficult to

get enrollment approvals for first-choice classes in our prestigious Computer Science department.

***Important information about choosing classes**

UPS students may not enroll in graduate business courses at the Rady School of Management or any courses in the School of Medicine or the School of Pharmacy. In addition, lesson-based courses in Music are not available to visiting students. It is important to be flexible in your course selection and include a list of 12 or more classes per quarter that you would like to take when applying for admission to the UPS program. For a complete list of all UC San Diego courses please see the “Schedule of Classes” section at: students.ucsd.edu

For a list of UC San Diego Extension course offerings please see: extension.ucsd.edu. Students may also enroll in the UPS program in order to complete one or more of UC San Diego Extension’s part-time professional certificate programs.

Tuition does not include optional student recreation fee, any required course lab fees, or additional premium tuition for certain technical courses.

Tuition \$7,800 USD

YANNICK ROSENLEHNER
GERMANY

Going to an American university is very different compared to universities in Europe. I really enjoyed the passion everyone brings to the campus. Every professor and every advisor here gives their best to make your time at UC San Diego the most enjoyable you can have. Whenever you have a concern, there is someone around to help you out with it. You get a general positive feeling from the first second you step on campus. I have two overarching goals in my academic life.

First, I would like to soak in as many influences in regard to countries and cultures as possible. The United States was always on my bucket list of countries which I wanted to experience in more detail than just as a tourist. UC San Diego, which is located in one of the greatest cities in the country, gives you the perfect foundation to experience this wonderful country and its culture.

Second, I am aiming for a career in business. With the high degree of experience every professor has, they not only taught me the academic side of each subject but also real-world skills that will benefit me in my career.



22 SUMMER UNIVERSITY PROGRAM I OR II (5 WEEKS)

The 5-week Summer University Programs are for students who have a strong academic background and who would like to take a full-time or part-time schedule of credit-bearing Summer Session courses at UC San Diego. UC San Diego Extension's Summer University Program consists of regular university courses compressed into a five-week period.

The study workload is very rigorous. A schedule of 8 units (usually two classes) is considered full-time study. Students must achieve above-average final grades in all coursework ("B" or better).

Tuition \$6,075 USD (full-time)
Tuition \$4,925 USD (part-time)

UNIVERSITY CREDIT PROGRAMS ADMISSION REQUIREMENTS		
UPS TRACK 1	UPS TRACK 2	UPS TRACK 3 AND SUMMER UNIVERSITY PROGRAM
CEFR: level B2	CEFR: level C1	CEFR: level C1
TOEFL iBT: 80	TOEFL iBT: 85	TOEFL iBT: 90
IELTS: 6.5	IELTS: 7.0	IELTS: 7.5
Cambridge Advanced Exam: Pass	Cambridge Advanced Exam: Pass	Cambridge Advanced Exam: Pass
12 course units: • Maximum of 4 main campus units • 3 units in either Oral Presentations or Academic Writing & Research • 5 units in Extension courses (business, engineering, computer science, etc.)	12 course units: • Maximum of 8 main campus units • 4 units in Extension courses (business, engineering, computer science, etc.)	12 course units: • 12 units of main campus or Extension courses
<p>Additional admission requirements for all University and Professional Studies (UPS) program tracks and the Summer University Program:</p> <ol style="list-style-type: none"> 1. Copy of transcripts in English for the four most recent semesters of academic studies. These transcripts must clearly indicate excellent academic achievement. 2. A one-page statement explaining your reasons for choosing UC San Diego for your study abroad experience. <p>For University and Professional Studies (UPS) Track 1, 2, and 3:</p> <ol style="list-style-type: none"> 3. List of 12 or more courses per quarter, organized by quarter, that you would like to take at UC San Diego or UC San Diego Extension. Be sure to use the UC San Diego Course List form for 	<p>this. You will find the Course List Form on our website under "What to Send" in our "How to Enroll" section. Make sure to check the prerequisites for each class. To be eligible to enroll into classes, all prerequisites must be fulfilled.</p> <p>For Summer University Program Session I and II:</p> <ol style="list-style-type: none"> 4. International students must have graduated from high school in order to participate in any Summer University Program. 5. In addition to the 2019 International Programs application, students must also submit a 2019 Supplemental Summer University Program Application, which can be found on our website: ip.extension.ucsd.edu 6. List of 4 courses per session, organized by session, that you 	<p>would like to take at UC San Diego. Go to tritonlink.ucsd.edu to see which classes are offered for Summer Session I and II. Under "Enrollment Tools" select "Full Schedule of Classes." Make sure to check the prerequisites for each class. To be eligible to enroll into classes, all prerequisites must have been taken.</p> <p>Participating in these educational programs does not provide preference in admission to the University of California degree programs. Students interested in applying to UC degree programs should refer to the UC Admissions website, or the websites of other UC campuses they wish to attend, for details about their admissions process.</p>



Rady School of Management and north campus

23 BUSINESS ESSENTIALS (1, 2, or 3 QUARTERS)

Designed for students with one year of university study.

The Business Essentials program offers a broad introduction to American business practices with an overview of key business topics including Business Communication, Marketing, and Finance.

Program Benefits:

- Gain practical experience in an American workplace by completing an optional 48-hour unpaid internship. Internships may be on-campus or off-campus.
- Experience a multicultural classroom environment and learn with American students in select classes in quarters two or three.
- Learn business fundamentals from highly qualified, experienced instructors.
- Apply for Optional Practical Training (OPT), which allows students to work in the U.S. for up to one year, after three consecutive quarters of study.

Tuition \$6,000 USD (1 quarter)
 Tuition \$12,000 USD (2 quarters)
 Tuition \$18,000 USD (3 quarters)

BUSINESS ESSENTIALS SPECIALIZED PROGRAMS

24 BUSINESS ANALYTICS (1 QUARTER)

25 DIGITAL MARKETING (1 QUARTER)

26 LEADERSHIP AND MANAGEMENT (1 QUARTER)

Designed for students who have a university degree or two years of full-time professional experience with a high level of English proficiency.

These specialized tracks in Business Essentials will enhance your skills and career marketability through focused study. Build your career portfolio and apply newly learned tools in a real-world project.

Program Benefits:

- Qualifying students have the opportunity to pair these quarters with any other business certificate programs.
- Hands-on experiential project connects your classroom education with real-world businesses.
- Courses are led by practicing industry professionals.
- Experience a multicultural classroom environment and learn with American students in select classes.
- Schedules are designed to give you the freedom to explore California and the opportunity to attend local professional networking events.

Tuition \$6,000 USD (each quarter)

27 BUSINESS MANAGEMENT (2 or 3 QUARTERS)

Designed for students who have four or more years of full-time professional-level work experience or students who have a university degree with one year of full-time professional work experience.

The program offers students the opportunity to build their skills and knowledge in one of the following areas: Accounting, Finance, International Business, or Marketing.

Program Benefits:

- Experience an optional 120-hour unpaid internship in your field of study at a San Diego company.
- Study alongside international and American students in select classes.
- Apply for Optional Practical Training (OPT), which allows students to work in the U.S. for up to one year, after three consecutive quarters of study.

Business Management Overview

1st Quarter (15-17 units)

Required courses:

- Business Law for Managers
- Elements of Marketing
- Financial Accounting for Non-Accountants (FAFNA) or Accounting I
- Business Economics
- Organizational Behavior
- Internship Preparation

2nd Quarter (12-15 units)

Required courses and internship experience:

- Business Decision Making
- 120 hours of internship

Three required courses in area of specialization

Finance:

- Finance Management
- Financial Statement Analysis
- International Finance and Capital Markets

Accounting:

- Accounting II
- Financial Statement Analysis
- International Finance and Capital Markets

International Business:

- International Finance and Capital Markets
- International Trade Operations
- Global Marketing

Marketing:

- Market Research and Analytics
- Branding Strategy and Positioning
- Digital Marketing

3rd Quarter (12-15 units)

Advanced Studies:

Students who successfully complete two quarters of Business Management can further develop their skills in an area of specialization and earn a Certificate of Completion in Advanced Studies.

Courses include:

- Capstone project or class
- One required course in area of specialization
- Electives: Students will have the opportunity to choose 2-3 additional classes.

Tuition \$12,000 USD (2 quarters)

Tuition \$18,000 USD (3 quarters)



PAUL BÂCLE
FRANCE

As I have an engineering education, I wanted to take finance and project management classes to develop my knowledge in Business. The Project Management with Lean Six Sigma Green Belt Certificate helped me in a lot of diverse ways. First, I have been accepted in several companies who are amazed I have so much experience with the Green Belt project, being so young. It gives me knowledge and skills that will prove useful in my internship and in my career: diagnosing the existing situation, analytical skills, building efficient solutions to solve problems. It also teaches change management and how to communicate on this topic, which are key skills to be successful in any job.





CAMILA CAPPONI
CHILE

What I loved most about the Business Management program was the diversity of topics we covered. Even though we chose our own specialization, we still had plenty of opportunities to get insight into other fields of study. The advisors were outstanding and UC San Diego staff were always very fast answering any concerns I had. I never felt judged for asking questions. I was only expecting that the quality of the program would be good, but I found much more than that—I found support and guidance all the time. UC San Diego Extension opens your eyes to the world and you learn to understand life in a different way. My teachers and classmates shared their real experiences—stories of success and failure—and for me those were the most useful to understand and solve business or life problems.

28 BUSINESS MANAGEMENT PRE-MASTER'S (2 QUARTERS)

PRE-MASTER'S (3 QUARTERS)

Designed for students who want preparation for a master's degree program in a business-related field. Students will receive Conditional Nomination to UC San Diego's Rady School of Management upon acceptance to the Business Management Pre-Master's program. Students who successfully complete the Pre-Master's program and meet additional criteria will receive Official Nomination to Rady and a \$10,000 Fellowship to be applied to tuition costs at Rady.

Program Benefits:

- Receive Conditional Nomination to Rady's MBA, Master of Finance, or Master of Business Analytics.
- Experience an internship in your field of study at a San Diego company to better prepare you for the US job market.
- Practitioner-led instruction to build foundational and advanced business, quantitative, leadership, and teamwork skills
- Study alongside international and American students in select classes.
- All students who successfully complete either two or three quarters of the Pre-Master's track will receive a Business Management certificate.
- Apply for Optional Practical Training (OPT), which allows students to work in the USA for up to one year, after three consecutive quarters of study.
- Students who receive Official Nomination to Rady will receive a \$10,000 USD Fellowship to be applied to tuition at Rady.
- One GRE test included in the cost of the program.
- Rady School of Management application fee waived at the time the Business Management Pre-Master's student officially applies to the master's degree program.

Business Management Pre-Master's Overview

Quarter 1 (12-15 units)

- Elements of Marketing
- Financial Accounting for Non-Accountants or Accounting I
- Organizational Behavior
- GRE Exam Preparation
- Internship Preparation

Quarter 2 (12-15 units)

Required courses and internship experience:

- 120 hours of Internship
- Business Decision Making
- Leadership Course
- U.S. Academic Preparation Workshop(s)
- Two required courses in area of specialization.

Specializations include:

- Finance
- Marketing
- Accounting
- International Business
- Business Analytics

Optional Quarter 3 (12-15 units)

Advanced Studies:

Students who successfully complete the third quarter will receive a Certificate of Completion in Advanced Studies

- Capstone course in area of specialization
- One advanced business course in area of specialization
- Electives

Official nomination to the Rady School of Management is contingent upon successful completion of additional criteria including submission of letters of recommendation, strong academic records, and required GRE or GMAT scores.

Tuition \$12,000 USD (2 quarters)
Tuition \$18,000 USD (3 quarters)

29 PROJECT MANAGEMENT CERTIFICATE PROGRAM (2 QUARTERS)

Designed for students who have a university degree with one year of full-time professional work experience or four or more years of full-time professional-level work experience.

Learn the nuances of project management and process improvement from a global perspective. Students will acquire the skills to plan, execute and complete complex projects within various types of organizations and industries. Students will participate in the Lean Six Sigma Green Belt course to improve quality and streamline process activities. The student will apply newly-learned tools and methodologies in both comprehensive real-world and simulated hands-on projects.

Program Benefits:

- Earn both a Project Management certificate and a Lean Six Sigma Green Belt certificate while implementing a real-life project with a local organization.
- The curriculum fulfills the necessary Project Management Institute (PMI) education hours to prepare for the PMP or CAPM certification exam.
- The curriculum fulfills the American Society for Quality's (ASQ) educational requirements needed to prepare for the Six Sigma Green Belt Certification (CSSBB) exam.
- Transfer select units to the online Master of Science in Project Management program at the University of Wisconsin, Platteville, upon certificate completion.

Tuition \$12,000 USD

BUSINESS CERTIFICATE PROGRAM ADMISSION REQUIREMENTS

BUSINESS ESSENTIALS CERTIFICATE	BUSINESS ESSENTIALS CERTIFICATE SPECIALIZED PROGRAMS	BUSINESS MANAGEMENT CERTIFICATE	BUSINESS MANAGEMENT CERTIFICATE PRE-MASTER'S PROGRAM	PROJECT MANAGEMENT CERTIFICATE
TOEFL iBT: 75	TOEFL iBT: 80	TOEFL iBT: 80	TOEFL iBT: 80	TOEFL iBT: 80
TOEIC: 735	TOEIC: 760	TOEIC: 760	PTE: 65	TOEIC: 760
IELTS: 6.0	IELTS: 6.5	IELTS: 6.5	IELTS: 7.0	IELTS: 6.5
Cambridge First Certificate: Pass	Cambridge Advanced: Pass	Cambridge Advanced: Pass		Cambridge Advanced: Pass
ELI Core Level: 107	ELI Core Level: 109	ELI Core Level: 109		ELI Core Level: 109
<p>Requirements:</p> <ul style="list-style-type: none"> • Dated and signed letter of recommendation on academic or company letterhead from a professor or supervisor. • Resume or CV. • Essay: minimum 200 words explaining your qualifications and motivation for taking the program. • A spoken language screening may be required for students applying to all business certificate programs. • All official academic transcripts in English indicating a strong academic record; include a grading key. • Recommendation from UC San Diego-ELI Advisor for prospective students who choose to attend English language courses at ELI in place of obtaining an official language proficiency score. <p>Preferred Qualifications:</p> <ul style="list-style-type: none"> • One year of university study preferred but not required. 	<p>Requirements:</p> <ul style="list-style-type: none"> • Dated and signed letter of recommendation on academic or company letterhead from a professor or supervisor. • Resume or CV. • Essay: minimum 200 words explaining your qualifications and motivation for taking the program. • A spoken language screening may be required for students applying to all business certificate programs. • All official academic transcripts in English indicating a strong academic record; include a grading key. • Recommendation from UC San Diego-ELI Advisor for prospective students who choose to attend English language courses at ELI in place of obtaining an official language proficiency score. • Completion of a university degree OR two years of full-time professional experience. 	<p>Requirements:</p> <ul style="list-style-type: none"> • Dated and signed letter of recommendation on academic or company letterhead from a professor or supervisor. • Resume or CV. • Essay: minimum 200 words explaining your qualifications and motivation for taking the program. • A spoken language screening may be required for students applying to all business certificate programs. • All official academic transcripts in English indicating a strong academic record; include a grading key. • Recommendation from UC San Diego-ELI Advisor for prospective students who choose to attend English language courses at ELI in place of obtaining an official language proficiency score. • Completion of a university degree and one year of professional experience. • No degree required if applicant has four years of full-time professional work experience. Internships are acceptable. 	<p>Requirements:</p> <ul style="list-style-type: none"> • Two dated and signed letters of recommendation on academic or company letterhead from professors or supervisors. • Resume or CV. • Personal statement: minimum 500 words (see website for details). • A spoken language screening may be required for students applying to all business certificate programs. • All official academic transcripts in English indicating a strong academic record (minimum 3.0 out of a 4.0 scale); include a grading key. • Copy of a degree from a 4-year accredited university prior to the start-date of the program. • Supplemental application form from ip.extension.ucsd.edu 	<p>Requirements:</p> <ul style="list-style-type: none"> • Dated and signed letter of recommendation on academic or company letterhead from a professor or supervisor. • Resume or CV. • Essay: minimum 200 words explaining your qualifications and motivation for taking the program. • A spoken language screening may be required for students applying to all business certificate programs. • All official academic transcripts in English indicating a strong academic record; include a grading key. • Recommendation from UC San Diego-ELI Advisor for prospective students who choose to attend English language courses at ELI in place of obtaining an official language proficiency score. • Completion of a university degree and one year of professional experience. • No degree required if applicant has four years of full-time professional work experience. Internships are acceptable.

FREQUENTLY ASKED QUESTIONS FOR BUSINESS CERTIFICATE PROGRAMS

IS THERE A DEADLINE TO APPLY?

Space is limited and the admissions review is competitive. We recommend you apply early to allow time for your application to be reviewed and for your visa processing. Visa processing may take several months. Not all applicants are admitted to the programs. Note: No applications will be accepted within ten days of a program's start-date.

CAN I APPLY WITHOUT ALL THE REQUIRED DOCUMENTS?

No, you will need to wait to apply until you have all the required documents. The only exception is if

you have all the required documents except the language score AND you are currently attending the UC San Diego Extension English Language Institute (ELI). Only students who attend UC San Diego-ELI can apply for conditional acceptance to the business certificate programs.

DO I HAVE TO TAKE A LANGUAGE EXAM?

No, if the medium of instruction was English at your university, you can request a language waiver, or if you are attending a UC San Diego ELI 8-week program you can request a recommendation letter from your ELI Advisor.

WHAT IS CONDITIONAL ACCEPTANCE?

It means you are provisionally

accepted based on all requirements except for the language score. This is strictly for students attending an 8-week English language program at UC San Diego Extension ELI.

DO I NEED A UNIVERSITY DEGREE?

For most business certificate programs, applicants with qualifying work experience do not need a degree. Please see the admissions criteria for the program you are interested in. Business Essentials applicants do not need a degree or work experience.

CAN I ADD AN EXTRA QUARTER AFTER I ARRIVE?

Yes, you can add on additional quarters of study at any time.

WHAT IS OPTIONAL PRACTICAL TRAINING (OPT)?

Students may apply for Optional Practical Training (OPT), which allows students to work in the U.S. for up to one year, after three consecutive quarters of study in any business certificate program.

IS A CAR REQUIRED?

Access to a car or other reliable transportation is required as some classes (day and/or evening) are located at the off-campus UC San Diego Extension facility (University City Center), which has very limited or no public transportation.

WHO MAY I CONTACT FOR MORE INFORMATION?

For more information, please contact bpis@ucsd.edu.

BENEFITS OF TAKING OUR TEFL PROGRAMS

- Study alongside American students
- Develop effective ESL/EFL teaching skills and learn firsthand from experienced ESL/EFL Instructors
- Qualify for Optional Practical Training (OPT) after three consecutive quarters of certificate study
- Transfer credits from UC San Diego Extension's Teaching English as a Foreign Language (TEFL) Certificate Programs to the Master of Arts in Education with an emphasis in Teaching English to Speakers of Other Languages (TESOL) at The Graduate School of Education at Alliant International University in San Diego
- Students who transfer directly from an 8-week UC San Diego-ELI English program, or from another UC San Diego TEFL program, will get a \$250 USD discount on their tuition for the TEFL Proficiency, Special Studies in TEFL, or TEFL Professional Certificate Hybrid Format. They will get a \$500 USD tuition discount on the 6-month TEFL Professional Certificate when they transfer directly from an 8-week UC San Diego-ELI English program or from another UC San Diego TEFL program.

30 TEFL PROFICIENCY CERTIFICATE

This three-month program will provide a strong foundation for language instruction. Students will choose the courses they feel will most appropriately prepare them for successful teaching practices.

Program Features:

Students will choose 5 courses from the following areas:

- Theoretical Foundations
- Reading/Writing
- Speaking/Listening
- Pronunciation
- Grammar
- Teaching English to the Young Learner

Tuition \$5,950 USD

31 SPECIAL STUDIES IN TEFL

This is an in-person full-time, three-month program of select courses in TEFL and other academic areas to enhance teacher preparation. Students must choose and enroll in a total of 15 UC San Diego Extension units, with the advice and approval of the TEFL Coordinator. No online courses will count towards the Special Studies in TEFL program.

Tuition \$5,950 USD

TEFL PROGRAMS ADMISSION REQUIREMENTS
TEFL PROFICIENCY
TOEFL paper- based: 525
TOEFL iBT: 69
TOEIC: 690
IELTS: 5.5
Cambridge FCE and Advanced Exams: Pass
GTEC CBT: 1126
EIKEN Grade: Pre-1
TEFL PROFESSIONAL CERTIFICATE, SPECIAL STUDIES IN TEFL, TEG, TEYL, HYBRID
TOEFL paper- based: 525
TOEFL iBT: 69
TOEIC: 690
IELTS: 5.5
Cambridge Advanced Proficiency Exams: Pass
GTEC CBT: 1126
EIKEN Grade: Pre-1
Additional requirements:
1. Copy of transcripts in English for the two most recent years of academic studies
2. A one-page statement explaining why you would like to take a TEFL certificate program

32 TEFL PROFESSIONAL CERTIFICATE PROGRAM (6-MONTH FORMAT)

This program focuses on the development of effective classroom teaching skills. Learn modern English language teaching techniques to teach in both English and non-English speaking countries. Both prospective and current English teachers will improve their knowledge of English language teaching in the TEFL Professional Certificate Program.

Program Features:

The curriculum consists of the following core courses:

1. Best Methods in Teaching Listening Skills (3 units)
2. Teaching Writing for Academic and Professional Purposes (3 units)
3. Theories and Methods of Language Teaching and Learning (3 units)
4. Theory and Methods of Reading Instruction (3 units)
5. Advanced Analysis of English Sentence Structure I (3 units)
6. Best Methods in Teaching Pronunciation and Fluency (3 units)
7. Best Methods in Teaching Speaking Skills (3 units)

In addition, three all-day Saturday workshops or one additional three-unit elective course must be completed. Students can choose from several electives, depending on what is offered each quarter. Some examples are:

- Advanced Analysis of English Sentence Structure II (3 units)
- TEFL Practicum: Best Methods in Developing and Delivering Lesson Plans (3 units)
- Games for the EFL Classroom (1 unit)
- Grammar and Editing I or II (3 units each)
- Oral Presentations for Language Teachers (3 units)
- Teaching Language through Art (1 unit)
- Teaching TOEFL Prep Classes: Paper and Internet (1 unit)

Tuition \$8,300 USD



YING-TING WANG
TAIWAN

Although I had studied in a similar field in my home country, I never had that many practical learning experiences until I came to San Diego. At UC San Diego Extension, I am able to create my own lesson plans, teaching different language skills. I also have plenty of chances to do demonstrations and receive constructive feedback from my peers and teachers, which has helped me develop my own teaching style and better understand how to be a great English teacher. I firmly believe the TEFL program helped me lay the foundation of a career in teaching English. I will be able to apply every single lesson in my future classroom.

33 TEFL PROFESSIONAL CERTIFICATE PROGRAM (HYBRID FORMAT)

Complete half of the 24-unit Professional Certificate in Teaching English as a Foreign Language (TEFL) program online from your home country, and half here at UC San Diego. Four core Professional Certificate courses can be completed online before or after your stay in San Diego. Online courses are available in select quarters. In-class courses can be taken only in winter and summer quarters.

Program Features:

Twelve units of online TEFL courses:

1. Best Methods in Teaching Listening Skills (3 units)
2. Teaching Writing for Academic and Professional Purposes (3 units)
3. Theories and Methods of Language Teaching and Learning (3 units)
4. Theory and Methods of Reading Instruction (3 units)

To receive the official Professional Certificate in TEFL, students must complete the remaining 9 required units in person at UC San Diego (see courses numbered 5-7 under "TEFL Professional Certificate 6-month Format"), in addition to 3 units of electives.

For more information about how to enroll in these online courses, please contact tefl@ucsd.edu.

In-class Tuition \$5,950 USD
Online Tuition \$395 per class

Note: For all TEFL programs, access to a car or other reliable transportation may be required for daytime or evening classes.

CONCURRENT CERTIFICATES

TEACHING ENGLISH GRAMMAR

Students who are already enrolled in the Professional Certificate in TEFL or Special Studies in TEFL Certificate may enroll in the Teaching English Grammar (TEG) concurrent TEFL program. The TEG program cannot be taken alone because it is not a full-time program and does not provide students with the Form I-20.

What this program includes

The required core courses are:

- Advanced Analysis of English Sentence Structure I
- Advanced Analysis of English Sentence Structure II

Students must choose 6 units from the following courses:

- Advanced Grammar Seminar I or II
- Grammar and Editing I or II

TEACHING ENGLISH TO THE YOUNG LEARNER

Students who are already enrolled in the Professional Certificate in TEFL or Special Studies in TEFL Certificate may enroll in the Teaching English to the Young Learner (TEYL) concurrent TEFL program. The TEYL program cannot be taken alone because it is not a full-time program and does not provide students with the Form I-20.

What this program includes

The required courses are:

- TEYL: Classroom Management
- Teaching Young English Learners in the Primary Grades (ages 4-7)
- Teaching Young English to the Intermediate Young Learner (ages 8-11)

Students must be prepared to pay for additional classes in order to obtain each concurrent certificate. Required courses and electives for each concurrent certificate may not all be offered in one quarter.

TEG and TEYL certificate enrollment fee: \$100 each



Surfing near UC San Diego



Geisel Library



TEFL Students

EXAMPLE OF PATHWAY TO OPTIONAL PRACTICAL TRAINING (OPT)



After one academic year (three consecutive quarters) of full-time study in a non-language program in the United States, students with F-1 status can apply for permission to work up to 12 months in their field of study as a practical application of what they have learned. This is called Optional Practical Training (OPT).

The International Student Services (ISS) staff will assist students with their application for OPT and continue advising during their employment authorization period. The ISS staff has a very high success rate with OPT applications. They cannot, however, guarantee the approval of the application by the U.S. government. Please note that the ISS staff does not assist with job search or job placement services.

EXAMPLE OF PATHWAY TO DEGREE PROGRAM



UC San Diego Extension International Programs has conditional admission agreements allowing students with strong academic records who have demonstrated a high level of achievement from their studies at UC San Diego Extension International Programs to gain full admission into a certificate, college, or university degree program. Our current partners include UC San Diego's Rady School of Management, California State University Chico, University of San Diego School of Law, Thomas Jefferson School of Law, California Western School of Law, Alliant International University Master's in TESOL, and Palomar College. Please contact the ELI Academic Advisor for more information at eliadvisor@ucsd.edu, or the Extension Business advisor at bpis@ucsd.edu.

The San Diego region boasts a wide array of companies in technological, life sciences, financial, telecommunications, and software industries:

- 800+ Cleantech/Environmental
- 600+ Sport Innovators
- 3,000 IT/Wireless/Communications/Software
- 80+ Research Institutes
- 260+ Defense/Transportation
- 600+ Biomedical/Life Sciences
- 50+ Mobile Health and Genomics
- 75+ Bioinformatics
- 75+ Cybersecurity and Autonomous Robotics
- 250+ Biofuels/Solar Energy and Energy Storage

The mild climate, beautiful landscape, and the many cultural and entertainment attractions of San Diego, complement a training experience by providing many opportunities for recreational and cultural enjoyment.

CUSTOM PROGRAMS

UC San Diego Extension International Programs department has a long and rich history of offering high-quality customized programs and seminars for international groups of students, professors, and professionals. We can create

the perfect combination of studies and services for a group of any size, according to your specifications.

In collaboration with UC San Diego main campus and UC San Diego Extension departments, we have developed and delivered custom programs for many years in the following areas:

- Innovation and Entrepreneurship
- Healthcare Leadership and Management
- English for Oriental Medicine
- English for Nursing
- Business Leadership and Management
- Oral Presentations and Public Speaking
- Business, Economics and Trade
- Engineering and Technology
- University Faculty Development
- University Management
- University Student Affairs Development
- English Language Teacher Training
- High School Teacher Training
- Science Teacher Development
- University Academic Preparation
- Pharmacy Studies
- English for Pharmaceutical Sciences
- Global Marketing

To receive a Custom Program Inquiry Form, please send your request to ipmarketing@ucsd.edu.

THE DIFFERENCES BETWEEN UNIVERSITY OF CALIFORNIA, CALIFORNIA STATE UNIVERSITY, AND THE CALIFORNIA COMMUNITY COLLEGES

The **University of California** has 10 campuses and more than 238,000 students. Only the top 12.5% of California high school students are eligible for entry, but a much smaller percentage is accepted. universityofcalifornia.edu
 The **California State University** has 23 campuses and over 479,000 students. The top 33% of California high school students are eligible for entry. calstate.edu
 The **California Community Colleges** have 113 campuses and over 2.1 million students. Students spend their first two years at a community college and then transfer to one of the campuses of the University of California or California State University to complete their last two years of undergraduate study. cccoco.edu

SAN DIEGO ATTRACTIONS AND ACTIVITIES

To help students make the most of their stay in San Diego, our Activities Coordinator organizes opportunities to meet American students and go on excursions to popular attractions.

Activities include:

- Hiking
- Kayaking
- Surfing
- Snorkeling
- Beach bonfire
- Day at the Bay barbecue
- Disneyland
- San Diego Zoo
- SeaWorld
- Universal Studios
- Whale watching
- Conversation Café
- San Diego Padres baseball games
- Paintball

Some activities, such as the Day at the Bay and the Conversation Cafés, are free of charge. Others require a payment to cover transportation and admission tickets.

UC San Diego Sports and Events

While studying at UC San Diego Extension, students can join and participate in UC San Diego's recreational activities. The university is great for outdoor activities and has one of the most comprehensive sports facilities among California universities, including:

- Over 20 tennis courts

- Indoor and outdoor swimming pools
- Beach volleyball and basketball courts
- Soccer fields
- Rock climbing gym
- Sailing
- Surfing

For more information on UC San Diego sports and events, visit:

- recreation.ucsd.edu
- calendar.ucsd.edu

San Diego Attractions

The year-round mild climate, beautiful beaches, and proximity to many other California attractions make San Diego an ideal location.

Attractions include:

- Beaches, deserts, and mountains
- Hiking and biking trails
- Museums
- Playhouses and theaters
- Festivals
- Music and symphony halls
- Shopping and restaurants

For more information about San Diego, visit sandiego.org

California and the West

San Diego is an ideal starting point for weekend trips to some of the most exciting attractions in the American Southwest, such as Joshua Tree National Park, Yosemite National Park, the Grand Canyon National Park, and Las Vegas.



Balboa Park



Kayaking at La Jolla Cove

SAMPLE CALENDAR OF INTERNATIONAL STUDENT ACTIVITIES AND SAN DIEGO EVENTS

MONDAY	TUESDAY	WEDNESDAY	THURSDAY	FRIDAY	SATURDAY	SUNDAY
1 	2	3 	4 America's Finest City Tour	5 Conversation Café	6 SeaWorld	7 
8 UC San Diego Trivia Night 	9 UC San Diego Farmer's Market	10	11	12 International Café at UC San Diego International center	13 Day at the Bay Barbecue 	14 Snorkeling
15 	16 UC San Diego Lecture Series	17 San Diego Padres Baseball Game 	18 Beach Volleyball Game	19 	20	21 
22 	23 	24	25 World Famous San Diego Zoo	26 Moonlight Hike	27 	28 Cabrillo Festival at Cabrillo National Monument
29 	30 	31 				

GENERAL INFORMATION

HOW TO APPLY

Download the International Programs application form at ip.extension.ucsd.edu, "How to Enroll."

WHEN TO APPLY

It is best to apply 12–16 weeks before the program start-date to allow enough time for us to process your application and for you to make your visa and travel arrangements.

MINIMUM AGE REQUIREMENT

With the exception of our Youth Programs, you must be 18 years old to enroll in our international programs. Seventeen-year-old students may be admitted when living with an adult guardian and the parents submit a letter attesting to the student's maturity. For more information please contact ipadmission@ucsd.edu. Guardianship services are available through Family Abroad Homestay (fahomestay.com).

PAYMENT

Total fees and tuition must be received in our office 30 days prior to the published program start-date. Accepted methods of payment: cash, credit card (VISA/MasterCard/AMEX/Diners Club/JCB/Discover), traveler's checks, personal check, money order, cashier's check (drawn in U.S. currency on a U.S. bank), or bank-to-bank transfers using Western Union Business Solutions online. We cannot accept payment by bank wire for the application fee or express mail fee. Please pay these fees by credit card or check (U.S. bank only). It takes 10 – 15 business days for payments to be applied to your account. It is important to talk with your bank before sending credit card details because payments made by credit card are sometimes delayed due to credit card limits. Due to these delays, we strongly recommend that you or your agent complete payment of all tuition and fees at least 45 days before the program start-date to ensure timely receipt and recording of payment and to avoid delays in the beginning of your program.

FEES FOR LATE ARRIVAL

If you arrive on time and you are not able to complete registration by the end of the first day of the program or if you arrive late, we will charge you a \$200 USD Late Arrival Fee. You should be sure to arrange your travel to San Diego and accommodations in advance so that you can be here for the first day of the program. The first day of the program is the published start-date in our brochure and on our website. If you pay all fees to an agency, you must bring an agency receipt to the program registration to verify that all payments to an agency have been made.

CERTIFICATES

Certificates with the UC San Diego university seal are awarded upon successful completion of your program. Excellent attendance and academic performance are essential for certificate eligibility in all programs.

STUDENT VISAS

UC San Diego Extension International Programs is authorized under federal law to enroll non-immigrant alien students. We issue the Form I-20 to students who meet our admission requirements and who provide evidence of sufficient financial verification. Almost all students in our full-time programs come to the United States on F-1 student visas. In order to apply for an F-1 student visa, you will need a Form I-20 (Certificate of Eligibility for F-1 visa). You then take this I-20 to a U.S. Embassy or Consulate and apply for an F-1 visa. If you plan to apply for an F-1 visa, please complete the I-20 Request section on page A4 of the application form and provide signatures and a statement of financial verification as indicated. You can find our application form on our website: ip.extension.ucsd.edu under the tab called "How to Enroll."

If you are in any doubt about which kind of visa you need, we recommend that you ask either your local counseling source or the U.S. Embassy or Consulate for information. You may also contact our office at ipinfo@ucsd.edu.

WITHDRAWALS AND NON-REFUNDABLE FEES

All fees are non-refundable and non-transferable. The non-refundable, non-transferable fees are the following: application, medical insurance, international student service, express mail, bank-to-bank transfer, program change, late arrival, and cancellation. Students who apply through an agency or representative are subject to the agency refund policy and will receive any refund through their agency, not from UC San Diego. All refund requests must be in writing. All fees are subject to change. Please ask about current fees at time of withdrawal or change of program. Refunds take approximately 5-6 weeks to process.

Note: We recommend paying of tuition and fees by credit card. If you cancel or withdraw from a program, a refund to a credit card takes just 7-10 business days. A refund to you by any other means can take 5-6 weeks to process, plus 4-10 weeks for overseas mail delivery.

REFUND SCHEDULES

ALL PROGRAMS THAT LAST 8 WEEKS OR MORE

- Prior to first day of the program (published start-date in brochure): Full refund of tuition, student service fee, and medical insurance.
- 1st day of program through end of first week of classes (3:00 p.m. Friday): 50% refund of tuition only minus a \$500 withdrawal fee
- Week 2 of program classes and later: No refunds

ALL PROGRAMS THAT LAST FEWER THAN 8 WEEKS

- Prior to first day of the program (published start-date in brochure): Full refund of tuition, student service fee, and medical insurance.
- Day 1 of program: 50% refund of tuition only minus a \$500 withdrawal fee
- Day 2 of program and later: No refunds

YOUTH PROGRAMS AND SUMMER UNIVERSITY PROGRAM

Refund Schedules for Youth Programs and Summer University Program may be found on the UC San Diego Extension International Programs website at ip.extension.ucsd.edu



Bear at Bioengineering

ADDITIONAL COSTS

APPLICATION FEE (REQUIRED)

Application fee must be paid by credit card at the time of the application.

English Language Programs \$150
Youth Programs \$200
University Credit Programs \$200
Certificate Programs \$200

EXPRESS MAIL FEE \$50 (OPTIONAL)

If you would like express mail delivery of the I-20, this fee is due with the application. It is strongly recommended. Regular airmail may take 10-12 weeks for delivery. The fee may vary depending on location.

ISS PROGRAM CHANGE FEE \$150

This fee is required each time you want to change programs or program dates after submitting the original application for enrollment.

LATE ARRIVAL FEE \$200

This fee is required if you are not able to complete registration by the end of the first day of the published program start-date, or if you do not arrive on the first day of the program.

INTERNATIONAL STUDENT SERVICES FEE (REQUIRED)

You have access to many University Extension resources, including computer labs, academic advising, visa counseling, housing assistance, campus Student Health Services, and assistance with medical insurance matters, planning and implementation of recreational/social activities, a student ID card, and many other general student needs.

Short program or seminar of 1-4 weeks \$175

1-quarter program or session of 5-12 weeks \$380

2-quarter programs \$760

3-quarter programs \$1,140

AIRPORT TRANSPORTATION

The San Diego airport is located in downtown San Diego, about 30 minutes from the UC San Diego campus by car and about 1 hour 20 minutes by bus.

- Homestay or rent a room in

a home—For an additional fee your host family will pick you up and bring you to the San Diego airport when you return to your country at the end of your UC San Diego studies. Ask about airport transportation when booking accommodation.

- Near-campus apartments provided by Anatolia Corporate Housing for a fee.
- Off-campus housing by the Residence Inn by Marriott La Jolla—Information about a discount shuttle will be provided after reservation confirmation. Ask when booking for details.
- On-campus housing (summer only)—Information on airport shuttle and taxi transportation is included with UC San Diego Extension International Programs' acceptance materials.

BOOKS AND INSTRUCTIONAL MATERIALS

Books and materials are not included in the program tuition. Books and instructional materials CANNOT be purchased in advance. They must be purchased upon arrival at UC San Diego.

- ELI 8-week Programs: approximately \$300-\$500 per program
- ELI Short-term Programs: approximately \$150-\$175 per program (varies by program)
- Certificate and University Credit Programs: approximately \$200-\$800 per quarter.

COMPUTER LABS AND INTERNET ACCESS

All international students have access to two computer labs (46 stations) at UC San Diego Extension. Preference for computer lab use is given to class-related work. All computers have high-speed internet connections and are functional in multiple languages. There is no cost for computer use. Printing is available with a Print Card and costs 10 cents per page; scanning is also available and is free of charge.

LIBRARY CARD (OPTIONAL)

You can use the campus library without charge. To borrow books, however, you must buy a library card: approximately \$15 per quarter.

MEDICAL INSURANCE (REQUIRED)

UC San Diego Extension medical insurance is mandatory for all students.

2-week programs \$90

4-week programs \$180

5-week Summer University

Program \$270

8-week programs \$450

Certificate & University Credit

Programs - 1 quarter \$585

Certificate & University Credit

Programs - 2 quarters \$1,170

Certificate & University Credit

Programs - 3 quarters \$1,800

Students with sponsors who provide medical insurance that meets our minimum requirements can request a Medical Insurance Waiver form from iphealth@ucsd.edu.

Note: Between certain programs, there are gaps in insurance coverage. You must purchase additional insurance coverage for any gap period. The UC San Diego Extension medical insurance policy for international students provides unlimited coverage for medical conditions, with few exceptions. The insurance plan covers hospitalization, pre-existing conditions, mental health, and many other medical expenses, but not dental or eye care. You can purchase dental and vision plans at an additional cost. Medical insurance is non-refundable.

Accompanying spouses or children should also have medical insurance for the duration of your enrollment at UC San Diego. Medical insurance for a spouse or children of UC San Diego Extension IP students is \$35 per week per person. UC San Diego Extension medical insurance for your accompanying dependents is available for purchase if you have purchased UC San Diego medical insurance. For information on this requirement, contact our staff at iphealth@ucsd.edu. Note: Medical insurance fees are subject to change.

HOUSING

See pages 28-29. Also check ip.extension.ucsd.edu for updated information and additional details on housing options for UC San Diego Extension international students.

MEALS

The cost of meals varies greatly depending on budget and tastes, but a good meal costs about \$8 - \$10. Note that some housing choices include some meals. Homestay, for example, can include breakfast and dinner, and summer on-campus housing includes three meals per day.

UC SAN DIEGO PHOTO IDENTIFICATION CARD (OPTIONAL)

The cost of one UC San Diego photo ID card is included in the ISS fee. You will pay \$15 USD to replace a lost photo ID card.

RECREATION CARD (OPTIONAL)

To use the campus swimming pools, tennis courts, fitness centers, and other campus recreational facilities, you must buy a "Rec Card," which is approximately \$110 per quarter.

TRANSPORTATION (OPTIONAL)

Bike rental: approximately \$45 per week, or \$130 per quarter.

Shuttle service: free with student photo ID card

Bus pass: quarterly passes are approximately \$150 and monthly passes are approximately \$75. Prices are subject to change.

Car rental: approximately \$500 per month.

Parking on campus: student permits are approximately \$75 per month. See parking.ucsd.edu. Note: Parking availability on campus is limited and students are not guaranteed a parking spot with the purchase of a permit.

OPT APPLICATION ASSISTANCE (OPTIONAL)

We provide advising and application assistance to students who apply to the U.S. Citizenship and Immigration Services for permission to work in the U.S. for up to one year under the Optional Practical Training benefit. (See page 24.) Cost: \$100 (Government filing fees are a separate cost.)

Please Note: All fees are subject to change.

HOUSING

HOMESTAY

Contact Foreign Student Homestay at fshsandiego.com, or San Diego Homestay at sandieghomestay.com, or Family Abroad Homestay at fahomestay.com
Available year-round

COST

Placement Fee \$200

Private Room

(incl. breakfast and dinner)

4 weeks	\$960
9 weeks	\$2,160
11 weeks	\$2,640
weekly rates	\$240
additional nights	\$35 per night

Rent a Room (no meals included)

4 weeks	\$860
9 weeks	\$1,935
11 weeks	\$2,365
weekly rates	\$215
additional nights	\$35 per night

All fees are payable directly to the homestay agency (not UC San Diego). Ask at the time of booking for the San Diego airport pick-up fee of \$60 and a drop-off fee of \$40. If a student breaks the contract with homestay agency he/she has to pay \$250 penalty.

BENEFITS

- For a fee of \$60 USD, your host family or host meets you at the San Diego airport
- For a fee of \$40 USD your host family will take you to the San Diego airport
- You can see how Americans live and you will have more opportunities to practice your English.
- Homestay includes two meals a day (breakfast and dinner) or you may rent a room with no meals included.
- Sheets and towels are provided regularly.
- Laundry facilities are available

THINGS TO CONSIDER

- Students are expected to be courteous about the rules set by the host family.
- Host families do not provide transportation (except San Diego airport pick-up and drop-off for

a fee, if requested).

- The average commute by bus is 45 minutes (maximum 60 minutes door-to-door).
- Internet access is available, but students will need to provide their own computers.

NEAR-CAMPUS APARTMENTS

by Anatolia Corporate Housing
www.ac-housing.com
info@ac-housing.com
1- & 2-bedroom
Available year-round

COST

Placement Fee \$250

Shared Bedroom

4 weeks	\$925
9 weeks	\$2,020
11 weeks	\$2,422
26 weeks	\$5,345

Private Bedroom

4 weeks	\$1,525
9 weeks	\$3,402
11 weeks	\$4,152
26 weeks	\$9,345

All prices are per person for shared rooms (two people to a room, four to an apartment) and private bedrooms. Contact Anatolia for price/availability of single and family apartments. A non-refundable \$250 placement fee is required to reserve your space. The rest of your fees are due on or prior to arrival. All fees are payable directly to Anatolia (not UC San Diego). 4-week accommodation is limited in October and November.

BENEFITS

- There is a \$65 USD fee for pick-up at the San Diego Airport.
- Close to UC San Diego (10-15 minutes by bus or bike ride to UC San Diego Extension)
- Staff on call to assist international students.
- Fully furnished apartments including cotton bed linens, blankets, TV & DVD, kitchen utensils, washer and dryer
- Utilities, weekly maid service, local phone, wireless high-speed internet, basic cable TV service are all included.

- High-quality amenities, including tennis courts, pools, spas, business centers and fitness centers at most locations
- Walk to school, shopping centers, restaurants, grocery stores, coffee shops
- You live with other international students and/or UC San Diego students

THINGS TO CONSIDER

- Meals are not included. A fully accessorized kitchen is provided so you can cook your own meals.
- You must share your bedroom, bathroom, kitchen and living area (two people to a room, four to an apartment, two bathrooms per apartment).
- Same-gender apartments (accommodations for couples are available upon request.)

ON-CAMPUS APARTMENTS

ip.extension.ucsd.edu

Available in summer only

COST

July 4-week programs

Move-in	June 30
Move-out	July 27
Shared bedroom	\$1,755
Private bedroom	\$2,025

August 4-week programs

Move-in	July 28
Move-out	Aug 24
Shared bedroom	\$2,025
Private bedroom	\$2,295

If you are in an 8-week summer program and you are interested in on-campus housing at UC San Diego, please contact iphousing@ucsd.edu for availability and price.

Three meals per day at assigned campus cafeterias are included. Space is limited. Early reservations are important. Full payment is due at the time of submitting the reservation and should be paid by credit card. Other payment methods will delay or lose the reservation guarantee. No reservations will be made without full payment. Refunds: There are no refunds for on-campus housing if a cancellation is made within 14

business days of the published move-in date. However, if you cancel on-campus accommodation MORE THAN 14 business days before the published move-in date, you will receive a full refund minus \$1,000.

BENEFITS

- Short walk or bike ride to classes, swimming pool, gym and all campus events.
- Apartments include a kitchen, dining area, living room area, and outdoor patio or balcony.
- All meals are included at campus cafeteria.
- Sheets, blankets, towels and some housekeeping are included.
- Internet access available for a small set-up fee.
- You live with other international students and/or UC San Diego students.

THINGS TO CONSIDER

- No kitchen utensils or dishware
- You must follow campus rules. (For example, smoking is not allowed anywhere on campus and no alcohol unless you are over 21 and inside your room.)
- The nearest cafeteria is a 10-minute walk away and has a fixed schedule.
- A TV and telephone are not provided: installation is available for an additional fee.
- A campus parking permit is not included.
- Arrange your own airport transportation. Instructions are provided with your acceptance materials.
- There are no private bathrooms; there is one bathroom per apartment.
- You have to share the bathroom, kitchen and living area.
- Usually four or five people per apartment
- Student-style, simple living

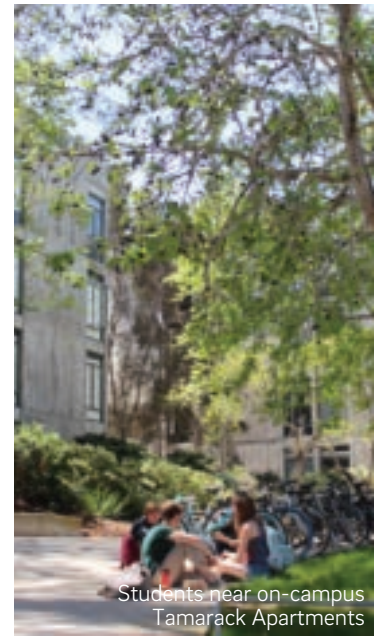
OFF-CAMPUS HOTEL ACCOMMODATION

The Residence Inn by Marriott La Jolla www.marriott.com/lajca

Please see their website for current prices. Studio includes one queen-size bed and one pull-out sofa bed (no twin beds). All fees payable directly to Marriott (not UC San Diego).



Near-campus apartments



Students near on-campus Tamarack Apartments

OFF-CAMPUS HOTEL ACCOMMODATION

Embassy Suites
www.sandiegolajolla.embassysuites.com

Please see their website for current prices or call **+1-858-453-0400** and request the "UC San Diego" discounted rate.

Embassy Suites is conveniently located in the University Towne Centre neighborhood near the UC San Diego campus and a major shopping mall. They offer two-room suites. All fees are payable directly to Embassy Suites (not UC San Diego).



Embassy Suites Hotel



On-campus Tioga and Tenaya Halls

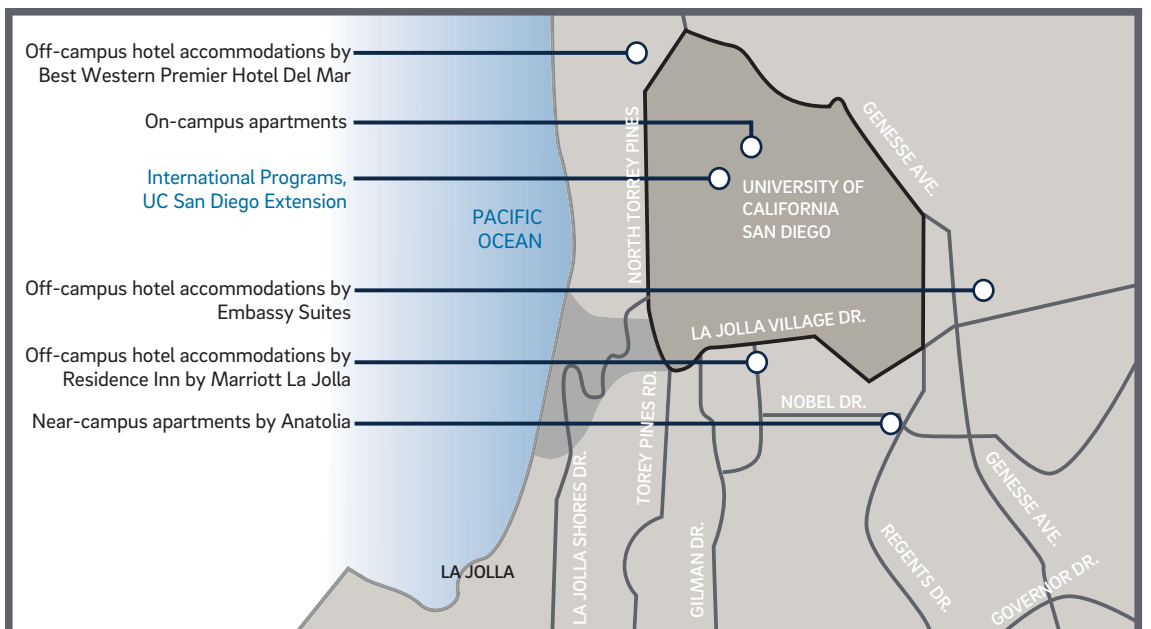
OFF-CAMPUS HOTEL ACCOMMODATION

Best Western Premier Hotel Del Mar www.hoteldelmar.com

Please see their website for current prices or call **+1-858-755-9765** and request the "UC San Diego" discounted rate.

Best Western Premier Hotel Del Mar overlooks the Pacific Ocean, and is within walking distance to Del Mar's many shops, galleries, restaurants and cafes. All fees payable directly to the Best Western Premier Hotel Del Mar (not UC San Diego).

A credit card is required for a reservation with the discount rates. Hotel accommodations allow several people to use the same room for the same rate.



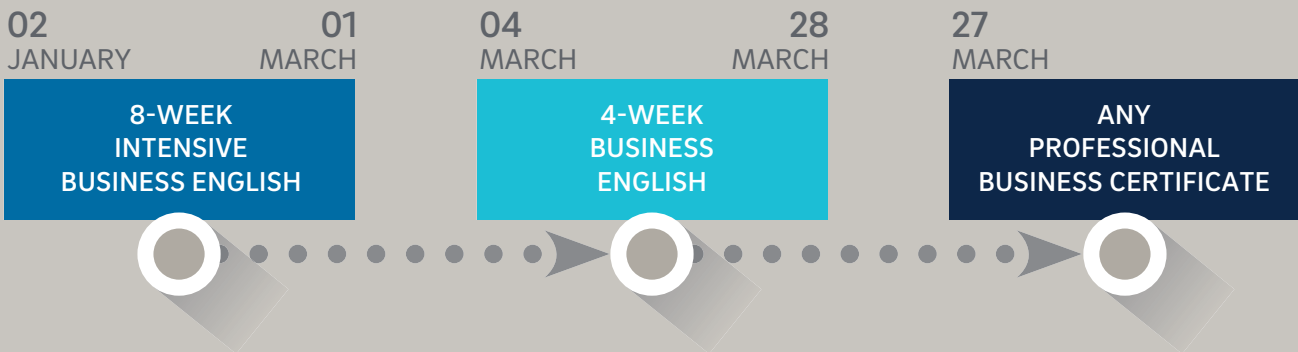
			JANUARY	FEBRUARY	MARCH		
2-WEEK AND 4-WEEK ENGLISH LANGUAGE PROGRAMS	CONVERSATION	1	Jan 7 - Feb 1	Feb 4 - Mar 1	Mar 4 - 28		
	CONVERSATION AND FLUENCY	2	Jan 7 - Feb 1	Feb 4 - Mar 1	Mar 4 - 28		
	UNIVERSITY PREPARATION ACADEMY	3					
	BUSINESS ENGLISH	4			Mar 4 - 28		
	LEGAL ENGLISH FOR BUSINESS	5					
	ENGLISH FOR ENGINEERING AND TECHNOLOGY	6	Jan 7 - Feb 1	Feb 4 - Mar 1	Mar 4 - 28		
	ENGLISH FOR PHARMACEUTICAL SCIENCES	7		Feb 4 - Mar 1			
	MEDICAL ENGLISH	8	Jan 7 - Feb 1				
	ACADEMIC ENGLISH (4-WEEK)	9	Jan 7 - Feb 1	Feb 4 - Mar 1	Mar 4 - 28		
ACADEMIC ENGLISH (2-WEEK)	9	Jan 7 - 18	Jan 22 - Feb 1	Feb 4 - 15	Feb 19 - Mar 1	Mar 4 - 15	Mar 18 - 28
8-WEEK INTENSIVE ENGLISH LANGUAGE PROGRAMS	COMMUNICATION AND CULTURE	10	Jan 2 - Mar 1				
	INTENSIVE COMMUNICATION AND CULTURE	11	Jan 2 - Mar 1				
	INTENSIVE ACADEMIC ENGLISH	12	Jan 2 - Mar 1				
	INTENSIVE TOEFL PREPARATION	13	Jan 2 - Mar 1				
	INTENSIVE IELTS PREPARATION	14	Jan 2 - Mar 1				
	ACADEMIC ENGLISH THROUGH SERVICE-LEARNING	15	Jan 2 - Mar 1				
	INTENSIVE BUSINESS ENGLISH	16	Jan 2 - Mar 1				
	INTENSIVE LEGAL ENGLISH	17	Jan 2 - Mar 1				
YOUTH PROGRAMS	ACADEMIC CONNECTIONS INTERNATIONAL	18					
	LEADERSHIP AND ENTREPRENEURSHIP	19					
	AMERICAN UNIVERSITY EXPERIENCE	20					
UNIVERSITY CREDIT PROGRAMS	UNIVERSITY AND PROFESSIONAL STUDIES	21	Jan 2 - Mar 23				
	SUMMER UNIVERSITY PROGRAM I OR II (5 WEEKS, FULL-TIME)	22					
	SUMMER UNIVERSITY PROGRAM I OR II (5 WEEKS, PART-TIME)	22					
CERTIFICATE PROGRAMS BUSINESS	BUSINESS ESSENTIALS (1 QUARTER)	23	Jan 3 - Mar 23				
	BUSINESS ESSENTIALS (2 QUARTERS)	23	Jan 3 - Jun 14				
	BUSINESS ESSENTIALS (3 QUARTERS)	23	Jan 3 - Sep 7				
	BUSINESS ANALYTICS (1 QUARTER)	24	Jan 3 - Mar 23				
	DIGITAL MARKETING (1 QUARTER)	25	Jan 3 - Mar 23				
	LEADERSHIP AND MANAGEMENT (1 QUARTER)	26	Jan 3 - Mar 23				
	BUSINESS MANAGEMENT (2 QUARTERS)	27	Jan 3 - Jun 14				
	BUSINESS MANAGEMENT (3 QUARTERS)	27	Jan 3 - Sep 7				
	BUSINESS MANAGEMENT PRE-MASTER'S (2 QUARTERS)	28	Jan 3 - Jun 14				
	BUSINESS MANAGEMENT PRE-MASTER'S (3 QUARTERS)	28	Jan 3 - Sep 7				
	PROJECT MANAGEMENT CERTIFICATE PROGRAM (2 QUARTERS)	29					
CERTIFICATE PROGRAMS TEFL	TEFL PROFICIENCY CERTIFICATE	30	Jan 3 - Mar 15				
	SPECIAL STUDIES IN TEFL	31	Jan 3 - Mar 15				
	TEFL PROFESSIONAL CERTIFICATE PROGRAM (6-MONTH FORMAT)	32	Jan 3 - Jun 14				
	TEFL PROFESSIONAL CERTIFICATE PROGRAM (HYBRID FORMAT)	33	Jan 3 - Mar 15				

		Full-Time Programs (F1 VISA)						Part-Time Programs (Tourist VISA or E.S.T.A.)			
	Application Fee	Express Mail (optional)	Tuition*	ISS Fee	Medical Insurance	Total to UCSD	Financial Verification** Requirement	Tuition*	ISS Fee	Medical Insurance	Total to UCSD
1	\$150	—	—	—	—	—	—	\$1,500	\$175	\$180	\$2,005
2	\$150	\$50	\$2,000	\$175	\$180	\$2,555	\$4,100	\$1,800	\$175	\$180	\$2,305
3	\$150	\$50	\$2,300	\$175	\$180	\$2,855	\$4,400	—	—	—	—
4	\$150	\$50	\$2,300	\$175	\$180	\$2,855	\$4,400	\$2,050	\$175	\$180	\$2,555
5	\$150	\$50	\$2,300	\$175	\$180	\$2,855	\$4,400	\$2,050	\$175	\$180	\$2,555
6	\$150	\$50	\$2,600	\$175	\$180	\$3,155	\$4,700	\$2,300	\$175	\$180	\$2,805
7	\$150	\$50	\$2,600	\$175	\$180	\$3,155	\$4,700	\$2,300	\$175	\$180	\$2,805
8	\$150	\$50	\$2,600	\$175	\$180	\$3,155	\$4,700	\$2,300	\$175	\$180	\$2,805
9	\$150	\$50	\$2,000	\$175	\$180	\$2,555	\$4,100	\$1,800	\$175	\$180	\$2,305
9	\$150	\$50	\$1,200	\$175	\$90	\$1,665	\$2,550	\$1,000	\$175	\$90	\$1,415
10	\$150	\$50	\$3,100	\$380	\$450	\$4,130	\$7,150	—	—	—	—
11	\$150	\$50	\$3,500	\$380	\$450	\$4,530	\$7,550	—	—	—	—
12	\$150	\$50	\$3,500	\$380	\$450	\$4,530	\$7,550	—	—	—	—
13	\$150	\$50	\$3,500	\$380	\$450	\$4,530	\$7,550	—	—	—	—
14	\$150	\$50	\$3,500	\$380	\$450	\$4,530	\$7,550	—	—	—	—
15	\$150	\$50	\$3,500	\$380	\$450	\$4,530	\$7,550	—	—	—	—
16	\$150	\$50	\$3,800	\$380	\$450	\$4,830	\$7,850	—	—	—	—
17	\$150	\$50	\$4,000	\$380	\$450	\$5,030	\$8,050	—	—	—	—
18	\$200	—	—	—	—	—	—	\$6,300	\$175	\$135	\$6,810
19	\$200	—	—	—	—	—	—	\$4,900	\$175	\$90	\$5,365
20	\$200	—	—	—	—	—	—	\$4,900	\$175	\$90	\$5,365
21	\$200	\$50	\$7,800	\$380	\$585	\$9,015	\$12,250	—	—	—	—
22	\$200	\$50	\$6,075	\$380	\$270	\$6,975	\$9,050	—	—	—	—
22	\$200	—	—	—	—	—	—	\$4,925	\$380	\$270	\$5,775
23	\$200	\$50	\$6,000	\$380	\$585	\$7,215	\$10,450	HOLIDAYS IN 2019 (NO CLASS)			
23	\$200	\$50	\$12,000	\$760	\$1,170	\$14,180	\$22,200	Jan 1	New Year's Holiday		
23	\$200	\$50	\$18,000	\$1,140	\$1,800	\$21,190	\$34,000	Jan 21	Martin Luther King Jr. Day		
24	\$200	\$50	\$6,000	\$380	\$585	\$7,215	\$10,450	Feb 18	Presidents' Day		
25	\$200	\$50	\$6,000	\$380	\$585	\$7,215	\$10,450	Mar 29	Cesar Chavez Day		
25	\$200	\$50	\$6,000	\$380	\$585	\$7,215	\$10,450	May 27	Memorial Day		
26	\$200	\$50	\$6,000	\$380	\$585	\$7,215	\$10,450	July 4	Independence Day		
26	\$200	\$50	\$6,000	\$380	\$585	\$7,215	\$10,450	Sept 2	Labor Day		
27	\$200	\$50	\$12,000	\$760	\$1,170	\$14,180	\$22,200	Nov 11	Veterans Day		
27	\$200	\$50	\$18,000	\$1,140	\$1,800	\$21,190	\$34,000	Nov 27	In-Service Day		
28	\$200	\$50	\$12,000	\$760	\$1,170	\$14,180	\$22,200	Nov 28-29	(English language programs only) Thanksgiving Holiday		
28	\$200	\$50	\$12,000	\$760	\$1,170	\$14,180	\$22,200	Dec 24-25	Winter Holiday Break		
28	\$200	\$50	\$18,000	\$1,140	\$1,800	\$21,190	\$34,000	Dec 31-Jan 1	New Year's Holiday (2020)		
29	\$200	\$50	\$12,000	\$760	\$1,170	\$14,180	\$22,200	Program dates include academic breaks between quarters and holidays as listed above.			
30	\$200	\$50	\$5,950	\$380	\$585	\$7,165	\$11,300				
31	\$200	\$50	\$5,950	\$380	\$585	\$7,165	\$11,300				
32	\$200	\$50	\$8,300	\$760	\$1,170	\$10,480	\$18,200	NOTE: End dates for UPS and all TEFL programs vary, depending on course selections.			
33	\$200	\$50	\$5,950	\$380	\$585	\$7,165	\$11,300	For dates in 2020, please refer to our website in July 2019.			

COMBINE PROGRAMS TO MAXIMIZE YOUR STUDY ABROAD EXPERIENCE

Here are some possible program combinations:

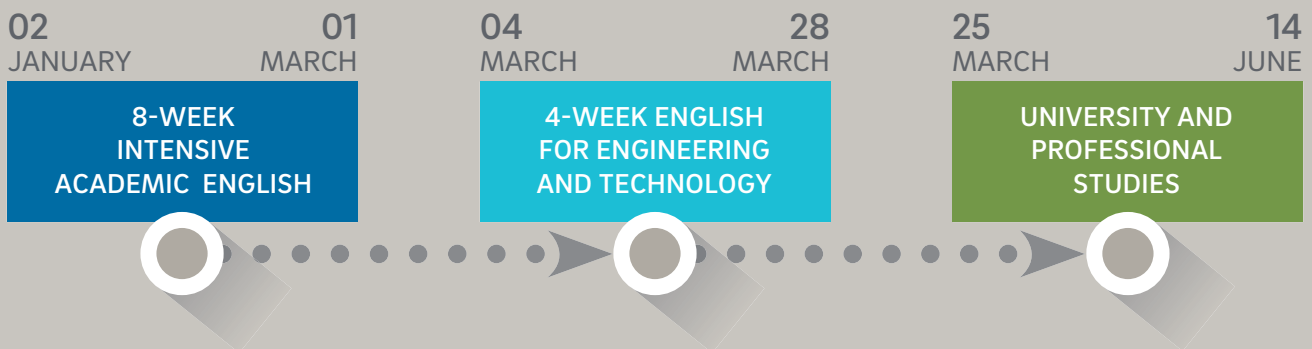
12 MONTHS OR MORE:



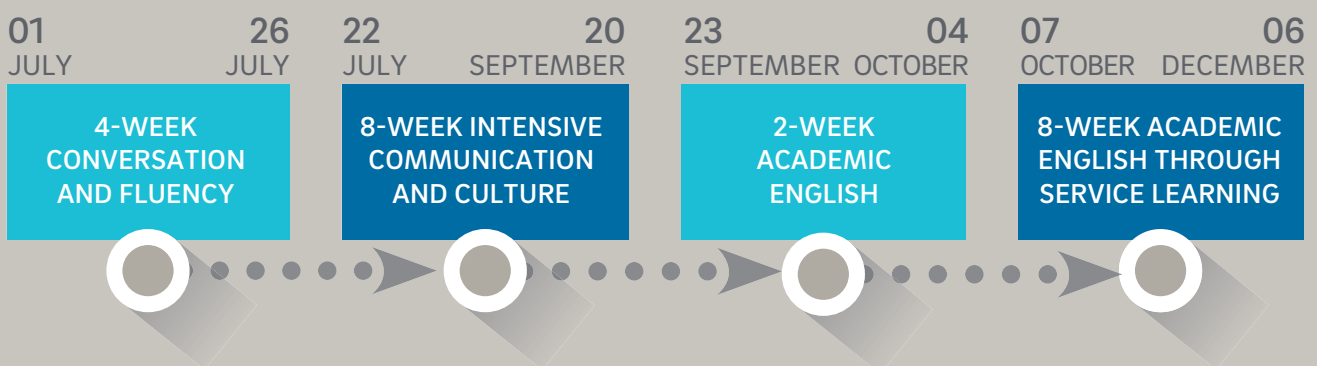
11 MONTHS OR MORE:



7 MONTHS OR MORE:



6 MONTHS OR MORE:



WHAT COMBINATIONS OF PROGRAMS DO YOU WANT?

SEND US YOUR IDEAS AT ipinfo@ucsd.edu



UC San Diego Extension is a proud member of the UC Extension International Programs Consortium. UC San Diego ELI is a member of the American Association of Intensive English Programs and accredited by the Commission on English Language Program Accreditation.
Not printed at state expense



University of California, San Diego
International Student Services
UCSD Extension, 0176-D,
9500 Gilman Drive
La Jolla, CA 92093-0176 USA
Tel: 1-858-534-6784
Fax: 1-858-534-5703
Email: ipinfo@ucsd.edu
ip.extension.ucsd.edu