



A global university of technology, design and enterprise

Anielle Leung
Manager, Global Experiences
Global Experience Office



RMIT University is an amazing institution

We offer life-changing experiences for students and staff. We help to shape the world with our research, innovation, teaching and engagement.

Our students are incredibly diverse and our people are defined by their passion, interests, talent and drive.

Join us to be part of the RMIT story.

Martin Bean CBE

Vice-Chancellor and President
RMIT University



RMIT is one of Australia's original universities

Founded in 1887



Established as a public university in 1992



5 campuses in Australia and Vietnam



A hub in Barcelona, Spain focused on research, industry collaboration and global experience programs in Europe



3 colleges
17 schools



84,000 students
35% international students



5,000 staff



Exchange partnerships with over 220 partners across 50 countries



Technology, design and enterprise

RMIT University offers a wide variety of study options across 17 schools in three academic colleges.

Business

- Accounting
- Business IT and Logistics
- Economics, Finance and Marketing
- Graduate School of Business and Law
- Management
- Vocational Business Education

Design and Social Context

- Architecture and Design
- Art
- Education
- Fashion and Textiles
- Global, Urban and Social Studies
- Media and Communication
- Property, Construction and Project Management

Science, Engineering and Health

- Engineering
- Health and Biomedical Sciences
- Science
- Vocational Engineering, Health and Sciences

RMIT is a top-ranking university

#18 in the world and #3 in Australia for universities less than 50 years old¹



14th highest ranked university in Australia and 247th in the world²



#37 in the world for the international profile of academic staff²



#115 in the world for employer reputation (#8 in Australia and #3 in Victoria)²



#2 in Australia and #15 in the world for graduate employability³



#1 in Australia for Art and Design and #17 in the world, and #4 in Australia for Architecture and the Built Environment and #28 in the world⁴



Top 100 universities in the world for:

- Business and Management Studies
- Communication and Media Studies
- Computer Science and Information Systems
- Development Studies
- Education
- Engineering (Civil and Structural)
- Engineering (Electrical and Electronic)⁴



Top 150 universities in the world for:

- Accounting and Finance
- Engineering (Chemical)
- Engineering (Mechanical, Aeronautical and Manufacturing)⁴



5-Star QS ranking for excellence in higher education



#1 in Australia for Fashion and Textiles and #17 in the world⁵



¹ 2017–18 QS Top 50 Under 50 Index

² 2017–18 QS World University Rankings

³ 2018 QS Graduate Employability Rankings

⁴ 2017 QS World University Rankings by Subject

⁵ 2016 Business of Fashion's Global Fashion School Rankings

Benefit from strong industry connections

RMIT has active connections to industry with partners across the world.

Many RMIT programs are co-designed with industry leaders to ensure students get the practical skills they need to succeed.

Practical learning experiences

Work-integrated learning allows students to use what they've learned in the classroom in a real-life scenario. Experiences may include:

- collaborative projects with organisations
- internships
- networking with industry leaders
- work placements from three weeks to 12 months

Industry mentoring

Undergraduate and Postgraduate students at RMIT have access to the RMIT Mentoring program. Having the one-on-one guidance through the program can help students fast-track their career and enable them to connect with the mentor who's right for them.



RMIT links with the world's best brands

ABB Australia

Adidas Group

Airbus

Alcatel-Lucent

Alcoa Australia

ANZ

ARUP

Audi Australia

Australian Property Alliance

Alliance

Australian Red Cross

BAE Systems

BHP Billiton

Boeing

Bombardier

Bosch Australia

Brookfield Multiplex

Bupa Australia

Chevron Australia

Coca-Cola

Deloitte

Ericsson Australia

Ernst & Young

European Union Commission

Commission

ExxonMobil Australia

Fonterra

Ford Motor Company

Foxtel

Fuji Xerox

GlaxoSmithKline

General Motors

Google

Hansen Yuncken

The Heart Foundation

Hewlett-Packard

Huawei Technology

Hyundai Motor Company

IBM

Intel

Isuzu

Jetstar Airways

John Holland Group

Jones Lang LaSalle

Knight Frank

KPMG

Lockheed Martin

L'Oréal Australia

MasterCard

Mercedes-Benz

Mirvac

Northrop Grumman

Orica

Oxfam

PricewaterhouseCoopers

Qantas Airways

Raytheon

Rolls-Royce

Saab

Siemens

Stockland

The Salvation Army

Telstra

Thales Group

Tiger Airways

TNT

Toyota

Transfield

UNICEF

Unilever

Uniqlo

Walt Disney Company

World Vision

Yahoo! Inc.

Global experiences

RMIT provides many opportunities for students to study and work overseas as part of their RMIT programs, and welcomes students from partner institutions to come to study for a semester or two in Australia and/or Vietnam.

Why study at RMIT?:

- a valuable international experience without doing your full degree overseas
- gain a truly global network
- get access to courses not offered at your home institution
- experience life in the world's most liveable city
- opportunity to combine studies in Australia and Vietnam



Chamendra Amarasinghe, Sri Lanka

Bachelor of Engineering (Aerospace Engineering) (Honours)/Bachelor of Business (Management)



I undertook a student exchange semester in China, at Nanjing University of Aeronautics and Astronautics. Moving to a country where English was not the main language was initially frightening, however, it taught me a lot about how to adapt.



We'll help students settle in

RMIT students have many avenues to make new friends, get support and find a job.

Social activities

Students will be part of a vibrant and welcoming community with plenty of social, cultural, sporting and recreation activities on offer.

Mates at RMIT

New international students are connected with current students through Mates at RMIT, a peer-mentoring program that offers a friendly support network to help students settle into Melbourne life.

Finding work while you study

Students who have a student visa are able to work for up to 40 hours per fortnight during semester and unlimited hours during semester break. Research students have no restrictions on the number of hours they can work per fortnight.

Support for students

- International student support
- Careers and employment services
- Disability services
- Financial advice
- Health information
- Accommodation assistance
- Legal advice
- Child care
- Personal counselling
- Spiritual support

Welcome to Melbourne

Safe, multicultural and the world's most liveable city.

Melbourne is a welcoming multicultural city, home to residents from 180 countries. Thanks to our many multicultural communities, students can easily explore cuisines from all around the world, as well as find their favourite tastes from home. In Melbourne, diversity is celebrated!

Melbourne features beautifully maintained public spaces, a network of bustling, creative laneways, iconic galleries and museums, as well as a lively year-round calendar of cultural, entertainment, fashion, food and sports activities and events.



"Melbourne has been voted the world's most liveable city seven years in a row"

– 2017 Economist Intelligence Unit Global Liveability Ranking



"Melbourne is in the top 10 safest cities in the world"

– 2015 Economist Intelligence Unit Safe Cities Index



"Melbourne is in the top 5 best student cities in the world"

– 2017 QS Best Student Cities Index

Explore your RMIT campus

From the hustle of Melbourne's city centre to the buzz of Brunswick and the tranquility of Bundoora.

RMIT's campuses are home to a dynamic and thriving student population, and are constantly evolving and expanding to meet the demands of contemporary university life.

You will find award-winning buildings, equipped with industry-standard facilities, modern technology and sustainable features, as well as comprehensive library collections, clubs and societies to appeal to a variety of interests, high-quality on-campus cafes, and all the support services you need.



Melbourne City campus

50,913 students

At the centre of the city

RMIT's largest campus, RMIT Melbourne City, is located in the centre of the city, also known as central business district (CBD). It is surrounded by cafes, galleries, museums, parks, restaurants and shopping centres. The campus is on the free tram zone and across the road from Melbourne Central train station, allowing easy access to public transport.

Key facilities include:

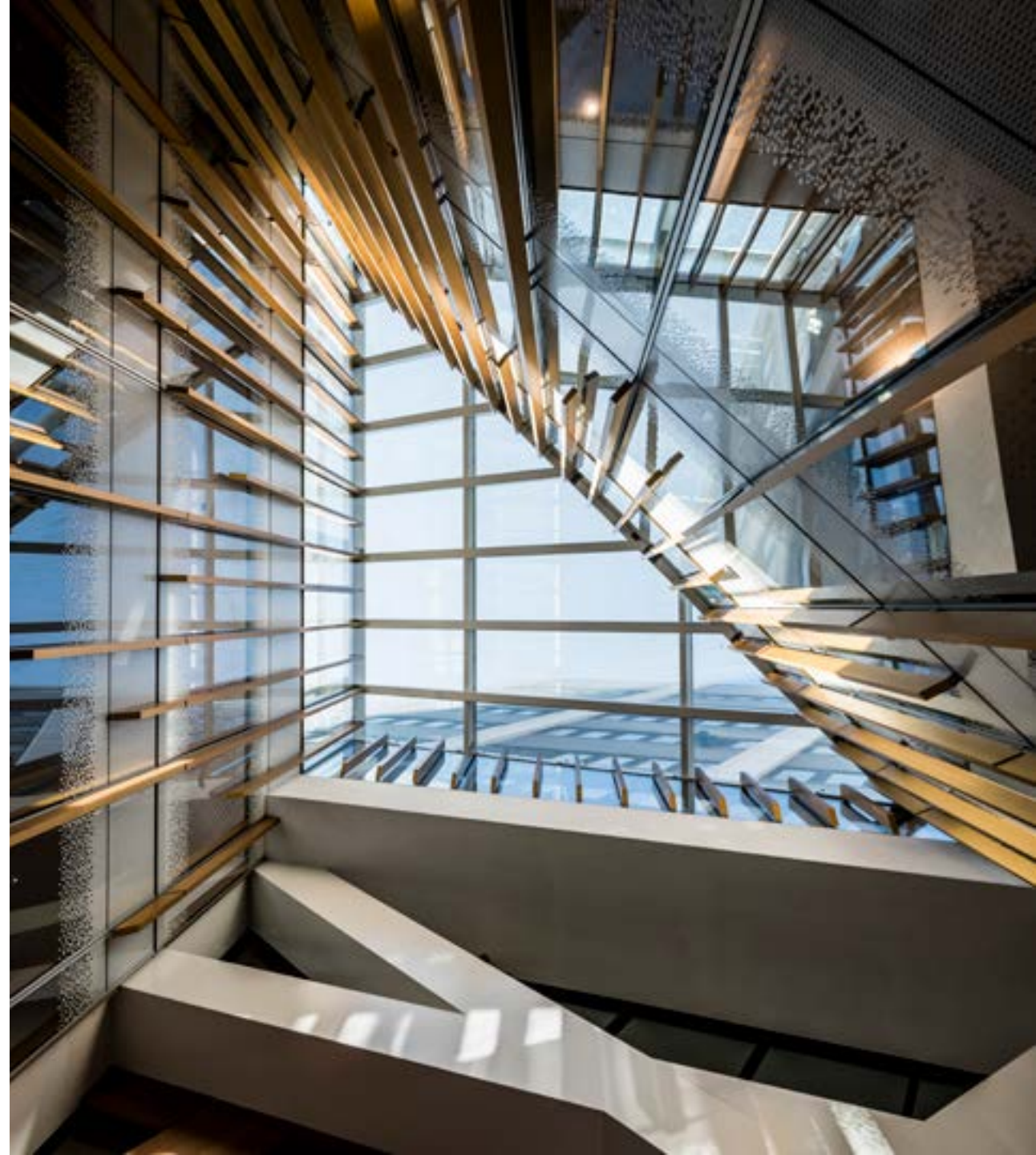
- award-winning and architecturally significant historical buildings
- outdoor recreational spaces
- the New Academic Street



New Academic Street

Providing students with a unique urban experience in the heart of the city, RMIT's New Academic Street (NAS) features a state-of-the-art media precinct, arcades and laneways featuring pop-up retail, a garden building, rooftop terraces, and completely refurbished library and student spaces.

For more information, visit nas.rmit.edu.au



Brunswick campus

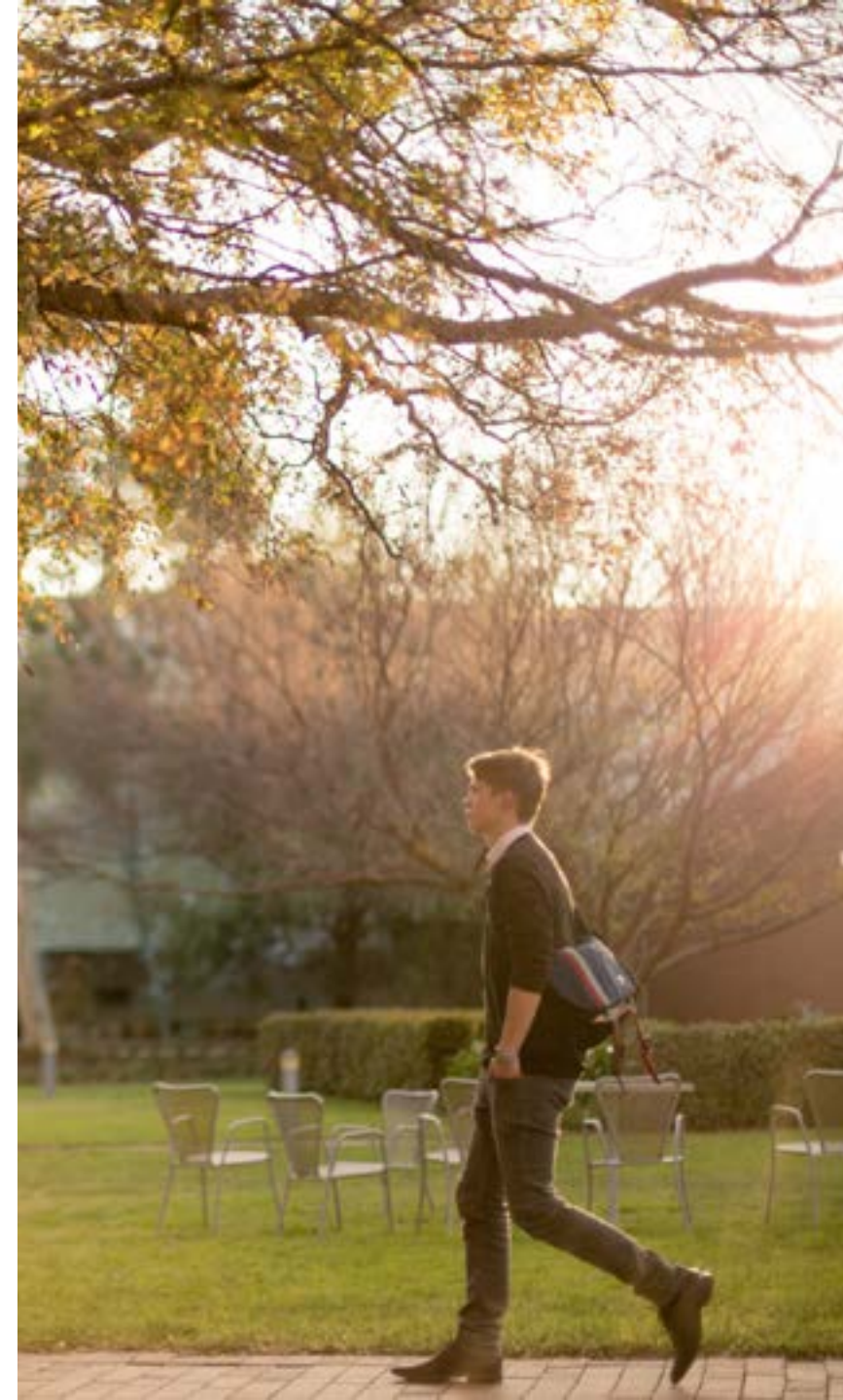
2,368 students

Part of a creative hub

Located just five kilometres north of the city centre, Brunswick is where multicultural Melbourne meets its creative soul. The campus is situated just a few minutes away from Sydney Road - a vibrant area with a variety of cafes, markets, restaurants, shops and pubs. At RMIT Brunswick, students can study our design-related programs, including fashion design, merchandising, product development and textile technologies.

Key facilities include:

- a purpose-built Fashion Hub, maintaining the School of Fashion and Textiles' global reputation as the southern hemisphere's best equipped and talent-rich hub
- studios and production labs
- exhibition and creative space



Bundoora campus

7,521 students

The great outdoors

The Bundoora campus is 18 kilometers north-east of Melbourne's city centre and is surrounded by amazing bushland and parks, complete with outdoors sporting facilities for football, athletics, tennis and netball. The campus, with East and West sections on either side of Plenty Road, houses many of RMIT's health and biomedical sciences, education, and engineering programs.

Key facilities include:

- a purpose-built health and medical science laboratory
- a dedicated engineering campus
- on-campus accommodation in brand new ultra-modern apartments



Map of campuses

Cutting-edge facilities in urban environments.

Study in a location that inspires you:

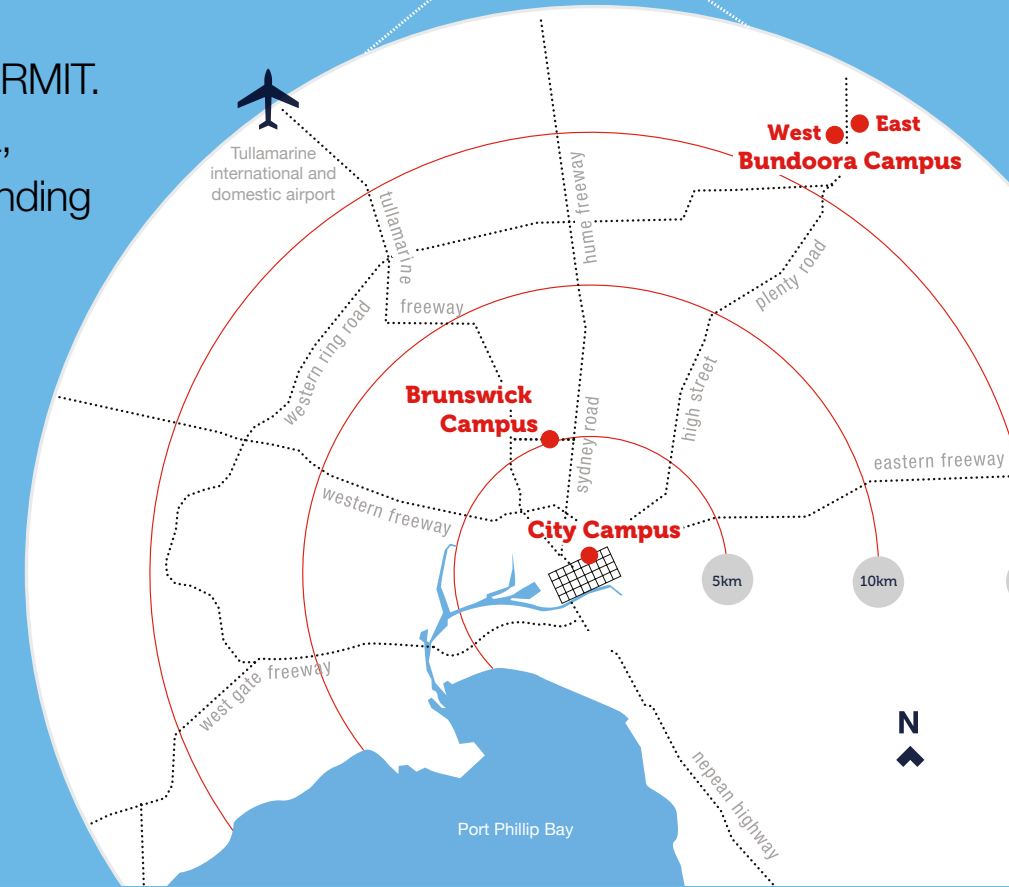
- Melbourne City, Brunswick and Bundoora, Australia
- Ho Chi Minh City and Hanoi, Vietnam
- Barcelona, Spain

RMIT Vietnam

RMIT Vietnam was established in 2000 and has grown into a leading university in the region, with two well-equipped campuses in Hi Chi Minh City and Hanoi.

RMIT Europe

RMIT Europe is the European hub of RMIT. Based in the vibrant city of Barcelona, Spain, RMIT Europe focuses on extending RMIT's global reach across research, industry and student mobility.



Find accommodation

Feel at home in Melbourne.

Search our accommodation database for housing near your campus. Our Student Support Advisors can provide students with accommodation advice to help them settle into life in Melbourne.

Accommodation options include:

- shared or private rentals
- apartments
- homestay
- student hostels
- on-campus accommodation at Bundoora

Find out more at rmit.edu.au/housing

Popular choices for international students

- RMIT Village: rmitvillage.com.au
- Urbanest: urbanest.com.au

Campus accommodation at Bundoora

Walert House offers 370 beds for students. The facility opened in 2016 and features a broad mix of unit types, including one, two and four-bedroom units.

For more information, visit rmit.edu.au/accommodation/oncampus



Excellence in research

RMIT has a reputation for excellence in applied and innovative research in our many areas of internationally recognised expertise.

The quality of the RMIT's research work has been endorsed by the Australian Research Council.

In its Excellence in Research for Australia evaluation, RMIT was rated “well above world standard” in 13 research fields, “above world standard” in nine fields, and “at world standard” in a further 12 fields.

Well above world standard

- Architecture
- Clinical Sciences
- Applied Mathematics
- Condensed Matter Physics
- Electrical and Electronic Engineering
- Materials Engineering
- Physical Chemistry, including Structural
- Aerospace Engineering
- Mechanical Engineering



Make an impact

Research at RMIT aims to solve critical global problems and to deliver significant economic, social and environmental impact.

Unlike conventional discipline-based research structures, RMIT's Enabling Capability Platforms connect researchers from multiple disciplines and from across colleges under a thematic umbrella.

Enabling Capability Platforms

- Advanced manufacturing and fabrication
- Advanced materials
- Biomedical and health innovation
- Design and creative practice
- Global business innovation
- Information and systems (engineering)
- Social change
- Urban futures



Research centres and groups

Our college and school-based research centres make a national and global impact in their specialist areas.

RMIT's research centres are linked to industry and government, enabling relevant, focused and applied research. Academics and researchers work in a vibrant collegiate environment, supported by advanced facilities, specialist resources and opportunities for career development.

As a researcher at RMIT you can:

- develop your own topic and pursue your own theories
- work independently while interacting with experts
- have your thesis or project critically reviewed
- receive scholarships, and government and industry grants
- participate in the commercialisation process



Sophisticated facilities, innovative solutions

RMIT has world-standard research centres, facilities and equipment for collaborative research, prototyping and product testing.

The first of its kind in Australia, RMIT's new MicroNano Research Facility is driving cutting-edge advances in micro and nano technologies.

Other facilities include:

- Food Research and Innovation Centre
- Health Sciences Research Hub
- Spatial Information Architecture Laboratory
- Nuclear Magnetic Resonance Spectroscopy Facility
- Vibrational Spectroscopy Facility
- Rheology and Materials Characterisation Laboratory
- Virtual Experience Laboratory (VXLab)
- Microscopy and Microanalysis Facility
- Exertion Games Lab
- Separation Science and Mass Spectrometry Facility
- Industrial wind tunnel
- Design Futures Lab

Advanced Manufacturing Precinct

RMIT's Advanced Manufacturing Precinct was established to meet the challenges facing industry and to enhance Australia's competitiveness in global markets.

It offers access to research, practical skills training, product design and testing across the full manufacturing process.

With a focus on additive technologies (3D printing), high-speed manufacturing and rapid prototyping, the centre enables industry to develop specialised products and processes.

