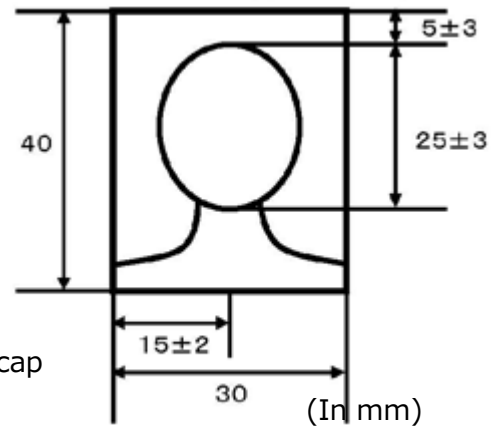


Requirements for ID photo







ID photo must meet all of the requirements listed below.

We will print and cut out your photo, so please take your photo with enough margin



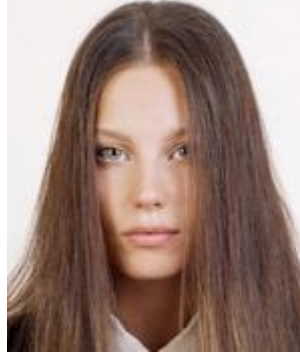
- The applicant must look straight ahead, without a cap or hat.
- The photo must not have any background or shadow.
- The photo must contain a clear image.
- The photo must be taken within three months before the submission.

Examples of inappropriate photos

		
A face is displaced from the center	A face turns sideways	Shadow in background
		
A body leans to one side	Eyeglass frame is on eyes	Eyeglass frame is too big



Glasses reflect illumination



A face covered by hair



A face with shadow



Unclear



Facial expression greatly different from usual



Background color is too dark