

**J**apanese

**L**anguage

**C**ulture

**P**rogram

神奈川大学  
日本語・日本文化  
プログラム

SUMMER :

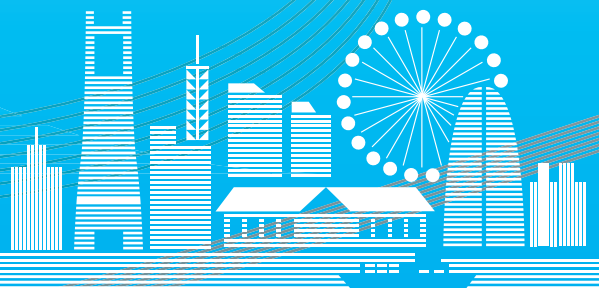
**JUN 29 [FRI]-AUG 3 [FRI], 2018**

APPLICATION PERIOD **JAN 9 [TUE]-MAR 30 [FRI], 2018**

WINTER:

**JAN 11 [FRI]-FEB 15 [FRI], 2019**

APPLICATION PERIOD **JUL 3 [TUE]-SEP 28 [FRI], 2018**



# Kanagawa University

Kanagawa University is committed to creating a more attractive academic environment in every dimension of campus life, from education and research to social contribution. With its Yokohama and Shonan Hiratsuka Campuses, Kanagawa University is a comprehensive university with seven undergraduate faculties consisting of 20 departments and two

programs, and nine graduate schools offering 14 courses. Students can choose to major in any of a large number of disciplines in the humanities and sciences. Yokohama campus is a functional and beautiful campus, in a location with convenient access to the Yokohama station area, Minatomirai area and Shibuya, Tokyo.

## International Center

The International Center provides advice and procedural support to students who wish to study abroad on exchange or on a language course. The center also supports the student life of international students and exchange students. In order to get accustomed to life in Japan, the center provides services including Japanese language study support, everyday life counseling, a tutor program for new students, events related to international students and a language exchange program.



## International Exchange

Kanagawa University seeks to prepare its students for active involvement in the international arena. This has been an objective ever since the university's founding in 1928, and is now guided by a fundamental policy on international exchange. Our efforts to further the cause of international exchange involve the conclusion of academic exchange agreements with universities overseas, as well as the expansion of short-term training programs with universities beyond these formal exchange agreements.



## Overview of Yokohama and Major Sightseeing Spots

Yokohama is located in the center of Japan, along the coastline of the Pacific Ocean, and one of the 20 Japanese Government-designated cities. The average temperature in the summers is 32°C with high humidity in the summer and 5.9°C with low humidity in the winters. The total population is 3.7 million, making the city the second largest after Tokyo's 23 Wards. A number of foreign enterprises have established their offices in Yokohama to take full advantage of its international trading port. Yokohama citizens are very proud of living here because it is not only very famous as a tourist mecca, but also has every urban function including, but not limited to, business and culture.



- Yokohama Landmark Tower
- Queen's Square Yokohama
- Yokohama Red Brick Warehouses
- Yamashita Park
- Sankeien Garden
- Yokohama Chinatown
- Kanagawa University Yokohama Campus
- Kanagawa University Shonan Hiratsuka Campus
- AKIHABARA
- SHINJUKU
- SHIBUYA
- TOKYO
- TOKYO DISNEY RESORT
- TOKYO INTERNATIONAL AIRPORT
- NARITA INTERNATIONAL AIRPORT
- HAKONE
- KAMAKURA
- Pacific Ocean

# Experience Japan~New and Old~in Yokohama!

# Study Japanese Language and Culture in Yokohama!

## Program

Focusing on Japanese language study, the program's objective is to improve Japanese proficiency and deepen understanding of both traditional Japanese culture and various aspects of contemporary Japan by taking classes related to Japan, going on field trips and having the opportunity to directly experience the tea ceremony, calligraphy, and so forth. Opportunities to interact with Kanagawa University students have also been incorporated into the program.

## Japanese Language Classes

- 5 weeks (Mon ~ Fri, 3 hours/day, approx. 74 hrs. in total)
- Improving communication ability through conducting interviews around campus or in the local shopping area to learn real, living Japanese.
- Approx. 15 students in a class.
- All students receive a final grade report.



## Lectures About Japan

- Lectures about Japan in English.
- Japanese Pop Culture, History, Economics and Politics etc.
- Class activities may include discussions with Japanese students.



## Hands-on Experience of Japanese Culture

- Interactive courses on Japanese culture in English.
- Japanese Tea Ceremony, Calligraphy, Ikebana (Japanese Flower Arrangement), Japanese Architecture and Kabuki (Japanese Traditional Theater) etc.





# Field Trips

■ Company and school visits.



# Weekend Activities

- Offered on weekends without extra fee.
- The activities may include visits to Yokohama, Hakone, and Tokyo etc.



# Buddies

■ KU students, as volunteer buddies, introduce participants to life on campus as well as provide assistance with daily life in Japan outside of class. The participants can practice everyday conversation and at the same time make friends with them.



## Program Sample Schedule

	Mon	Tue	Wed	Thu	Fri	Sat	Sun
				Arrival Day	PM: Placement Test Orientation Campus Tour Welcome Party	Off	Off
1st Week	AM: Japanese Class PM: Library Tour	AM: Japanese Class PM: Lecture about Japan 1	AM: Japanese Class PM: Ikebana	AM: Japanese Class PM: Self Study /Free Time	AM: Japanese Class PM: Visit	Off	1 Day Trip
2nd Week	AM: Japanese Class PM: Self Study /Free Time	AM: Japanese Class PM: Lecture about Japan 2	AM: Japanese Class PM: Tea Ceremony	AM: Japanese Class PM: Self Study /Free Time	AM: Japanese Class PM: Japanese Culture (Field trip)	Off	Off
3rd Week	AM: Japanese Class PM: Self Study /Free Time	AM: Japanese Class PM: Lecture about Japan 3	AM: Japanese Class PM: Calligraphy	AM: Japanese Class PM: Self Study /Free Time	AM: Japanese Class PM: Japanese Class (Field trip)	Off	Off
4th Week	AM: Japanese Class PM: Self Study /Free Time	AM: Japanese Class PM: Lecture about Japan 4	AM: Japanese Class PM: Yukata	AM: Japanese Class PM: Self Study /Free Time	2 Day Trip	2 Day Trip	Off
5th Week	AM: Japanese Class PM: Self Study /Free Time	AM: Japanese Class PM: Visit	AM: Japanese Class PM: Cooking Sushi	AM: Japanese Class PM: Self Study /Free Time	AM: Presentation PM: Certificate Award Farewell Party	Return Day	Return Day

☆ Please note the schedule is subject to change.  
 ☆ When you successfully complete the program, you will earn a certificate from the university.

## Daily Schedule

Japanese Class	08:45-09:45 / 09:55-10:55 / 11:05-12:05
Lunch Time	12:05-13:00
Lectures about Japan • Japanese Culture • Visit • Field Trip	13:00-15:00

☆ Please note the schedule is subject to change.

## Messages from Past Students

J.T. from University of Tasmania (Australia)



Although it was my second time doing a short-term study in Japan, I had a lot of things I would have liked to experience and learn. This program enabled me to experience all these things and more. We learned about the culture, the language and most importantly met a number of new people. It was a fantastic opportunity!

A.H. from University of California, San Diego (U.S.A)



I am glad my first trip to Japan is with the KU summer program. It not only provides interesting knowledge about Japan from various aspects but allows participants to explore the country by themselves during free time. The staff, teachers and buddies are all very nice and friendly! いろいろありがとうございました!

K.T. from City University of Hong Kong (Hong Kong)



I see myself making great progress in both written and spoken Japanese. The teachers are always willing to lend us a hand and they have tried their very best to teach as much as they can to us. I am also grateful because I have made so many friends from different countries. Thanks for all the care from the buddies as I find myself so loved and cared by them.

J.S from Aston University (U. K)



A great opportunity to experience Japanese culture, learn Japanese and meet new people. Everybody was really helpful and kind to make sure our experience was the best it could be. This program has helped motivate me to further my studies in Japanese language and culture. I would recommend it to anyone with even the slightest interest in Japan.

# Application



## Eligibility

- 18 years old and over
- Those who are enrolled in an undergraduate course (Equivalent to Japanese university 4-year degree course) or who have obtained a “Bachelor’s degree equivalent or higher” (Those who have graduated high school are not eligible to apply.)
- Those whose Japanese levels are elementary or intermediate (The highest level accepted is N2 on the JLPT. Beginners are welcome.)
  - \*However, those who have no knowledge of Japanese characters must learn hiragana and katakana before joining the program.
- Overseas applicants are responsible for visa arrangement. (We will send you an acceptance letter after you are accepted.)
- English capability in order to follow a lecture in English is required. (Hands-on Experience of Japanese Culture and Lectures about Japan are conducted in English.)
- Overseas applicants must be insured with traveler’s insurance.



## Program Places

- 50 students (for each program)



## Important Dates

Schedule	2018 Summer	2019 Winter
Program Duration	Jun 29 (Fri) - Aug 3 (Fri), 2018 (5 weeks)	Jan 11 (Fri) - Feb 15 (Fri), 2019 (5 weeks)
Application Period Begins	9-Jan-18	3-Jul-18
Application Deadline	30-Mar-18	28-Sep-18
Arrival Date	28-Jun-18	10-Jan-19
Program Starts	29-Jun-18	11-Jan-19
Program Ends	3-Aug-18	15-Feb-19



## How to Apply

[http://www.kanagawa-u.ac.jp/english/admissions/japanese\\_language.html](http://www.kanagawa-u.ac.jp/english/admissions/japanese_language.html)

- \*Submitted documents will not be returned for any reasons.
- \*Students from partner universities should consult with the international department of their universities.

# Contact

## International Center, Yokohama Campus, Kanagawa University

3-27-1 Rokkakubashi, Kanagawa-ku, Yokohama, Kanagawa, 221-8686 Japan  
 Tel: 045-491-1701 (from overseas +81-45-491-1701) (direct) Fax: 045-481-6011 (from overseas +81-45-481-6011)  
 E-mail: intl-japaneseprogram@kanagawa-u.ac.jp

For full details and application please refer to / the website below:  
[http://www.kanagawa-u.ac.jp/english/admissions/japanese\\_language.html](http://www.kanagawa-u.ac.jp/english/admissions/japanese_language.html)



# Payment



## How to Pay

Application fee (Non refundable)	JPY 30,000
Participation fee	JPY 130,000

(Not including round-trip air fare, meals, housing, living expenses, transportation expenses, insurance fee, medical expenses etc.)

[Note]

- Payment in Japanese yen must be completed by wire transfer to the bank account stated on the invoice by the payment deadline. All bank handling charges, at both sending and receiving ends, must be paid by the sender. Please write name of applicant in the message column on the bank transfer sheet. Credit cards are not accepted.



## Cancellation Policy

[http://www.kanagawa-u.ac.jp/english/admissions/japanese\\_language.html](http://www.kanagawa-u.ac.jp/english/admissions/japanese_language.html)

# Accommodation

KU helps students arrange Homestay accommodation. Please fill out the application form if you want to apply for Homestay accommodation through KU.



## Homestay

- You stay in a typical Japanese home and learn firsthand about Japanese culture and everyday customs. 2 meals (breakfast and dinner) will be provided 7 days a week.
- Fee JPY 136,728 (including placement fee)



## Dormitory / Share House etc.

Please request a contact list of accommodation through the online application form.  
 If you are interested in staying in a dorm, share house etc, please make accommodation arrangements by yourself.

