

nature INDEX 2015

GLOBAL



A guide to the Nature Index

A description of the terminology and methodology used in this supplement, and a guide to the functionality available free online at natureindex.com.

The Nature Index is a database of author affiliations and institutional relationships, used to track contributions to articles published in a group of highly selective science journals that have been chosen by an independent group of active researchers.

Data in the Nature Index are updated monthly, with the most recent 12 months of data made available under a Creative Commons license at natureindex.com.

The Nature Index provides absolute counts of high-quality publication productivity at the institutional and national level, and as such is one indicator of high-quality research output across the globe.

The database is compiled by Nature Publishing Group (NPG) in collaboration with sister company Digital Science.

The current journals tracked by the Nature Index will be reviewed again in 2015, and from 2016, coverage will be extended to include the clinical sciences.

NATURE INDEX METRICS

There are three measures provided by the Nature Index to track affiliation data. The simplest is the article count (AC). A country or institution is given an AC of 1 for each article that has at least one author from that country or institution. This is the case whether an article has one or a hundred authors, and it means that the same article can contribute to the AC of multiple countries or institutions.

To get a better sense of a country or institution's contribution to an article, and to remove the possibility of double-counting of articles, the Nature Index uses the fractional count (FC). FC takes into account the relative contribution of each author to an article.

The total FC available per paper is 1, and this is shared between all authors under the assumption that each contributed equally. For instance, a paper with 10 authors means that each author receives an FC of 0.1. For authors who have worked with joint affiliations, the individual FC is then split equally between each affiliation.

The third measure used is the weighted fractional count (WFC), which applies a weighting to the FC to adjust for the over-

Users of natureindex.com can search for specific institutions or countries and generate their own reports, ordered by article count (AC), fractional count (FC) or weighted fractional count (WFC).

Each query will return a profile page that lists the country or institution's recent research outputs, from which it is possible to drill down for more information. For example, articles can be displayed by journal, and then by article title. As in the supplement, research outputs are organized by subject area. The profile page also lists the institution or country's top collaborators, as well as its relationship with other research organizations.

representation of papers from astronomy and astrophysics.

The four journals in these disciplines publish about 50% of all papers in international journals in this field — approximately five-times the equivalent figures for other fields. Therefore, although the data for astronomy and astrophysics are compiled in exactly the same way as for all other disciplines, articles from these journals are assigned one-fifth the weight of other articles (i.e. the FC is multiplied by 0.2 to derive the WFC).

The total FC or WFC for an institution is derived by summing the FC or WFC for individual authors.

The process is similar for countries, although complicated by the fact that some institutions have overseas labs that will be counted towards the host country totals. What's more, there is

great variability in the way authors present their affiliations. Every effort is made to count affiliations consistently, and with the background of reasonable assumptions.

For more information on how the affiliation information is processed and counted, please see the frequently asked questions at natureindex.com.

THE SUPPLEMENT

Nature Index 2015 Global is based on a snapshot of data from natureindex.com, covering articles published between 1 January and 31 December 2014.

Most analyses within the supplement use the WFC as the primary metric, as it provides a more even basis for comparison, and in determining the relative contribution of each country/institution. ■

NATUREINDEX.COM

A global indicator of high-quality research

Institution name

Country

Research Collaboration Relationships

1 January 2014 - 31 December 2014

	AC	FC	WFC
Region: Global Subject/Journal group: All	1221	698.04	558.30

The table to the right includes counts of all research outputs for Institution name published between 1 January 2014 - 31 December 2014 which are tracked by the Nature Index.

Below, the same research outputs are grouped by subject. Click on the subject to drill-down into a list of articles organized by journal, and then by title.

Note: Articles may be assigned to more than one subject area.

Outputs by subject

Subject	AC	FC	WFC
Chemistry	276	179.1	179.11
Earth & Environmental Sciences	95	42.73	42.73
Life Sciences	439	231.50	231.50
Physical Sciences	652	284.48	244.74

[Return to institution outputs](#)

GLOBAL OVERVIEW

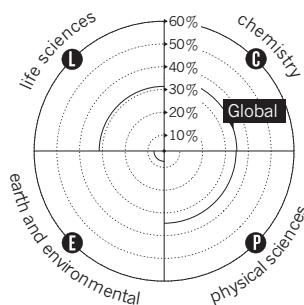
Three regions — North America, North & West Europe, and East & Southeast Asia — produced 91% of the overall 2014 output (WFC) in the Nature Index.

TO EACH THEIR OWN

Relative to its overall WFC, each region shows a unique subject distribution in the Nature Index. North America is extremely strong in the life sciences, whereas contributions from Central & East Europe and West Asia are predominantly in the physical sciences. East & Southeast Asia are strong in chemistry. North & West Europe and Australasia & Pacific Islands split their contributions relatively evenly amongst these broad subject areas.

Research output by subject

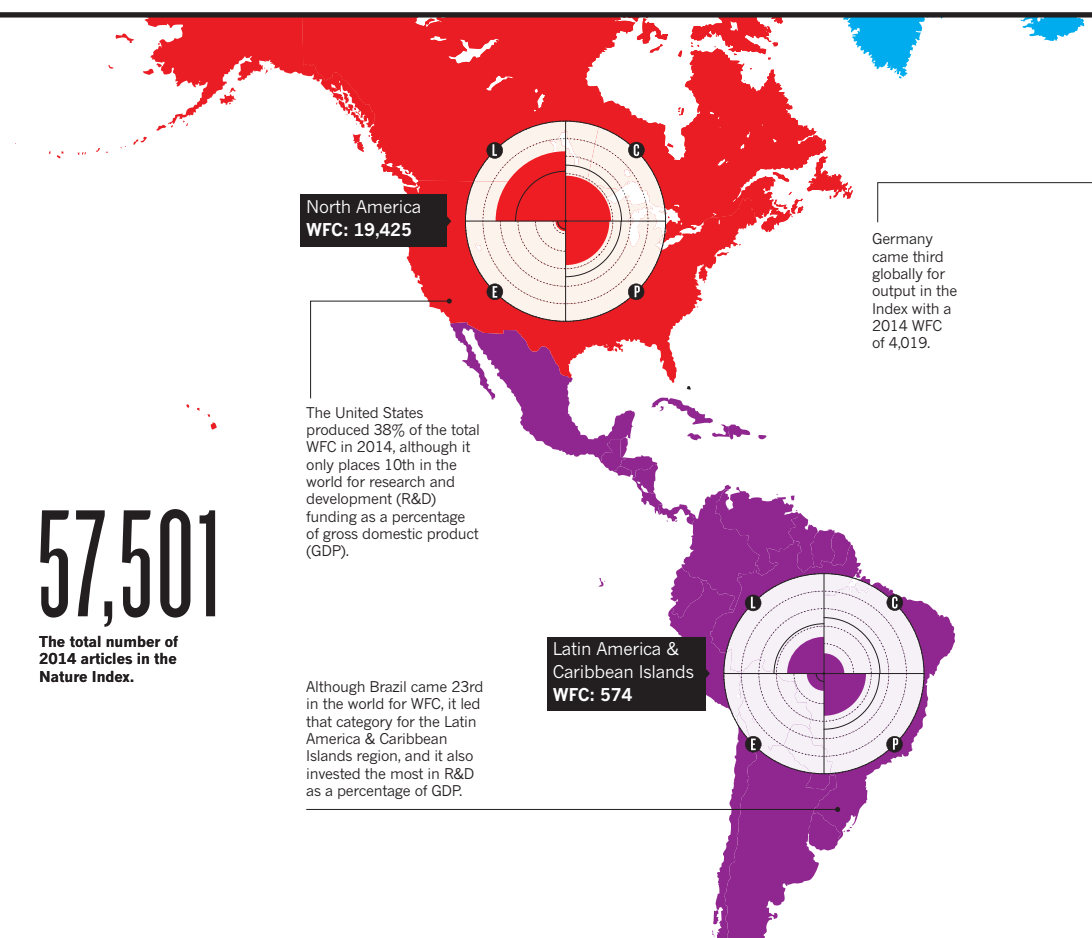
The graphics on the map show the proportion each subject area contributes to a region's overall WFC*.



*Subject areas can overlap, so the total percentage may exceed 100%.

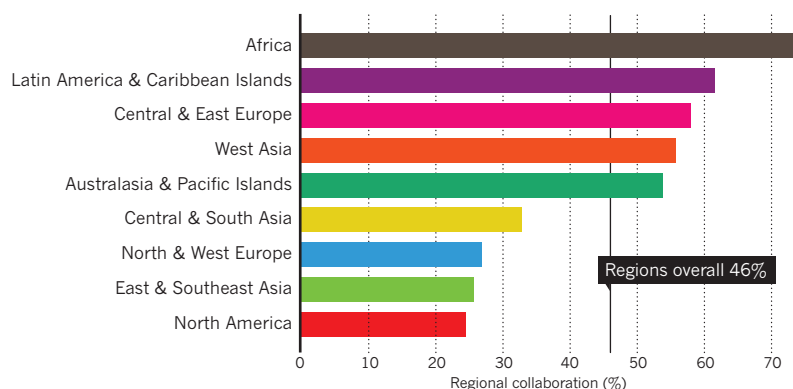
57,501

The total number of 2014 articles in the Nature Index.



REGIONAL COLLABORATION PATTERNS

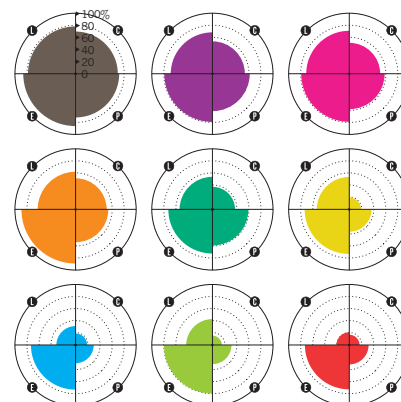
Most regions collaborate extensively with each other. African researchers are particularly active in forming connections with their counterparts in other regions, collaborating on over 70% of all their output in the Nature Index. The three heavy-weights — North & West Europe, East & Southeast Asia and North America — show the most regionally independent signature in their approach to collaboration.*



*Bars represent the proportion of a region's overall output in the Index (AC) stemming from collaborative efforts with other regions.

ENVIRONMENTAL COLLABORATIONS RULE

International collaboration rates differ not only across regions, but also across disciplines. In particular, researchers in the earth and environmental sciences reach out internationally.*



*Graphs represent the proportion of a region's overall output in the Index (AC) in each subject area stemming from international collaborative efforts.

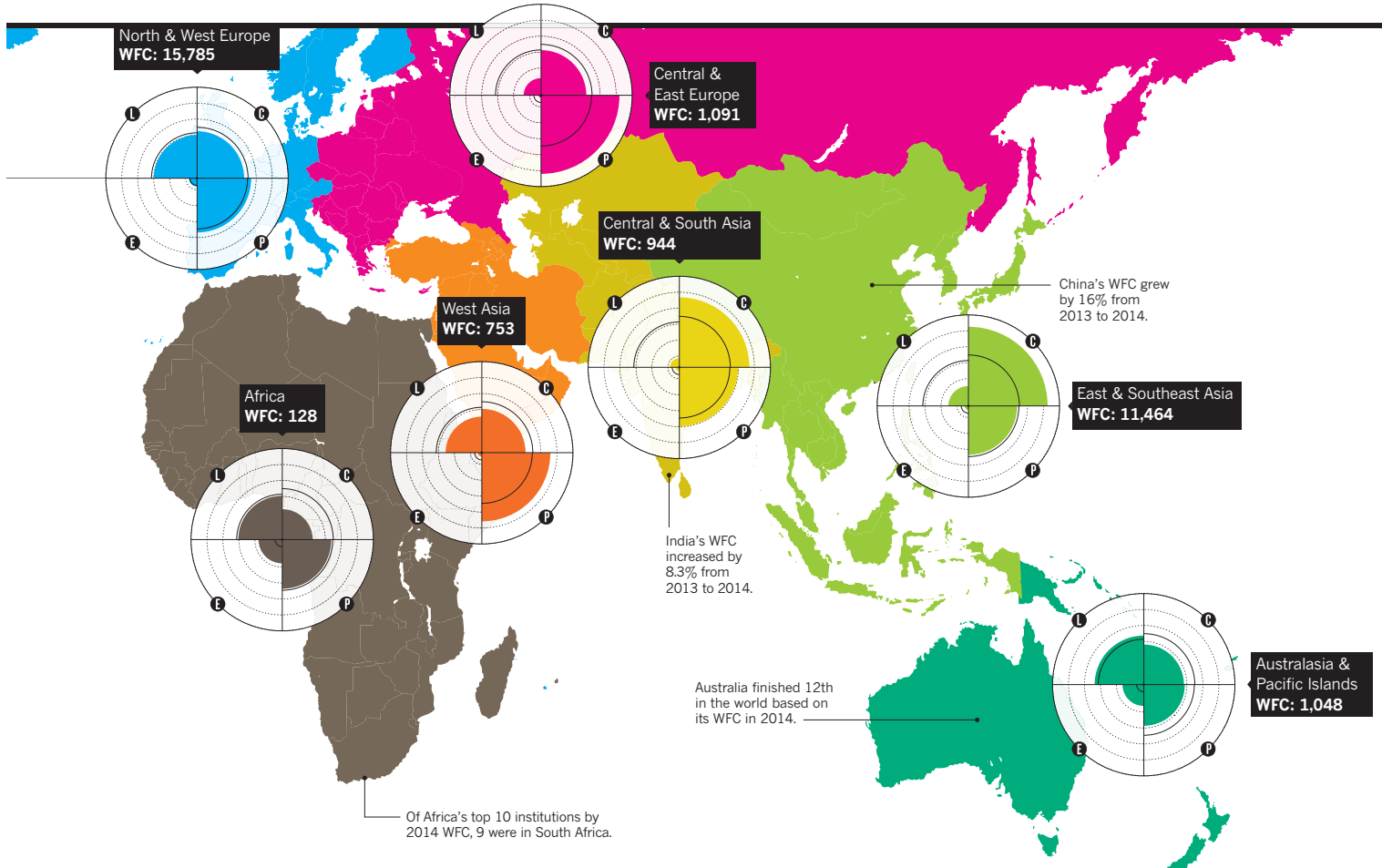


Regions

- North America
- Latin America & Caribbean Islands
- North & West Europe
- Africa
- Central & East Europe
- West Asia
- Central & South Asia
- East & Southeast Asia
- Australasia & Pacific Islands

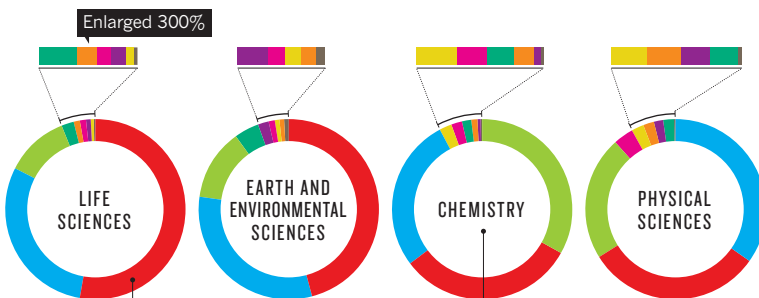
Acronyms

- AC: article count**
(number of papers)
- FC: fractional count**
(apportions article count for each contributor affiliation)
- WFC: weighted fractional count**
(applies a weighting to FC to correct imbalance in number of astrophysics papers)



SPREADING THE SUBJECT SPECIALTIES

Each subject area in the Index shows a unique regional contribution pattern according to WFC. Three regions — North America, North & West Europe, and East & Southeast Asia — account for most of the WFCs across all disciplines.

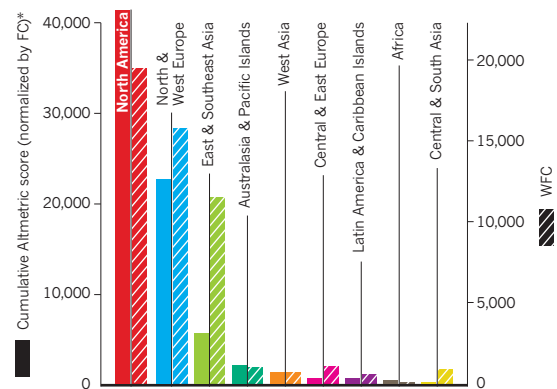


Eight of the world's top 10 institutional contributors to the Nature Index in the life sciences institutions in 2014 were in North America.

Top institutional chemistry contributor the Chinese Academy of Sciences accounted for three times the WFC compared to second-place French National Centre for Scientific Research.

GOING VIRAL

In general, a region's WFC correlates with its total Altmetric score. The exception is in East & Southeast Asia, where researchers might not publicize their work as well as scientists from other regions.



* Cumulative Altmetric scores were divided by FC for each region to account for the actual contribution of a region to a particular Altmetric score.

Nature Index tables

The Index's leading countries and institutions for high-quality science, ordered by weighted fractional count (WFC) for 2014. Also shown are the total number of articles, and the change in WFC from 2013. Articles are from the 68 natural science journals that comprise the Nature Index (see Guide to the Nature Index, page S30.)

TOP 100 COUNTRIES

2014	COUNTRY	WFC	ARTICLE COUNT	2013 WFC	2013-2014 CHANGE IN WFC
1	United States	17,936.51	26,638	18,581.10	-3.5%
2	China	6,037.22	8,641	5,204.06	16.0%
3	Germany	4,018.73	8,582	4,073.53	-1.3%
4	United Kingdom	3,249.72	7,592	3,271.65	-0.7%
5	Japan	3,200.43	4,976	3,365.50	-4.9%
6	France	2,221.95	5,243	2,232.59	-0.5%
7	Canada	1,488.90	3,226	1,480.64	0.6%
8	Switzerland	1,293.75	2,715	1,169.17	10.7%
9	South Korea	1,167.66	1,969	1,150.07	1.5%
10	Spain	1,090.72	2,897	1,177.00	-7.3%
11	Italy	1,046.98	3,052	1,078.08	-2.9%
12	Australia	951.22	2,497	932.86	2.0%
13	India	921.77	1,484	850.97	8.3%
14	Netherlands	757.33	2,189	759.47	-0.3%
15	Singapore	520.62	873	483.20	7.7%
16	Sweden	514.55	1,407	496.38	3.7%
17	Israel	492.44	1,012	473.15	4.1%
18	Taiwan	481.47	888	543.18	-11.4%
19	Russia	370.18	1,147	344.26	7.5%
20	Belgium	348.91	1,082	327.23	6.6%
21	Denmark	321.26	1,036	296.85	8.2%
22	Austria	318.98	856	279.97	13.9%
23	Brazil	237.01	715	233.69	1.4%
24	Poland	209.69	686	216.55	-3.2%
25	Finland	194.97	590	191.87	1.6%
26	Norway	149.81	415	122.42	22.4%
27	Czech Republic	126.33	372	118.43	6.7%
28	Portugal	117.45	416	123.53	-4.9%
29	Ireland	113.91	331	116.73	-2.4%
30	Argentina	98.58	321	105.55	-6.6%
31	New Zealand	95.69	275	117.58	-18.6%
32	Chile	95.13	857	75.43	26.1%
33	Greece	91.77	320	90.15	1.8%
34	Mexico	84.60	391	77.08	9.7%
35	South Africa	81.67	418	81.62	0.1%
36	Turkey	79.24	237	59.07	34.1%
37	Hungary	78.52	278	54.92	43.0%
38	Saudi Arabia	76.63	384	76.64	0.0%
39	Iran	67.87	147	58.55	15.9%
40	Ukraine	37.06	173	28.58	29.7%
41	Slovenia	36.36	106	43.20	-15.8%
42	Thailand	22.69	93	25.69	-11.7%

2014	COUNTRY	WFC	ARTICLE COUNT	2013 WFC	2013-2014 CHANGE IN WFC
43	Estonia	22.31	92	13.27	68.1%
44	Romania	21.41	79	17.47	22.6%
45	Croatia	17.56	102	21.86	-19.7%
46	Serbia	17.00	55	13.95	21.9%
47	Lithuania	16.85	58	11.26	49.7%
48	Malaysia	15.81	54	14.14	11.8%
49	Egypt	14.32	87	12.04	18.9%
50	Slovakia	14.16	64	12.57	12.6%
51	Puerto Rico	13.66	38	11.24	21.6%
52	Iceland	12.87	65	13.90	-7.4%
53	Pakistan	12.83	42	18.03	-28.8%
54	Cyprus	10.95	28	8.90	23.1%
55	Luxembourg	10.94	35	10.55	3.7%
56	Uruguay	9.55	22	5.21	83.5%
57	United Arab Emirates	9.37	49	7.08	32.2%
58	Colombia	9.36	56	9.45	-1.0%
59	Panama	8.84	32	6.61	33.9%
60	Bulgaria	8.59	63	9.49	-9.5%
61	Armenia	8.38	30	7.98	5.0%
62	Vietnam	7.53	29	8.23	-8.4%
63	Belarus	6.15	22	3.95	55.9%
64	Indonesia	5.92	30	4.28	38.4%
65	Kenya	5.64	25	5.36	5.2%
66	Qatar	4.98	35	3.96	25.6%
67	Peru	4.92	29	4.22	16.6%
68	Algeria	4.65	22	1.10	322.5%
69	Georgia	4.15	27	2.45	69.6%
70	Costa Rica	3.50	25	1.49	134.6%
71	Lebanon	3.08	14	3.34	-7.9%
72	Tunisia	2.75	13	2.84	-2.8%
73	Ecuador	2.48	19	2.48	0.1%
74	Bangladesh	2.45	14	2.28	7.7%
75	Venezuela	2.40	27	1.83	31.2%
76	Morocco	2.37	18	3.46	-31.4%
77	Latvia	2.18	12	3.18	-31.4%
78	Cuba	2.03	9	4.86	-58.2%
79	Oman	2.00	8	1.29	54.8%
80	Kazakhstan	1.93	9	2.85	-32.2%
81	Philippines	1.82	16	3.33	-45.4%
82	Moldova	1.68	10	3.35	-49.8%
83	Nepal	1.64	8	0.82	99.4%
84	Benin	1.62	6	0.37	341.4%
85	Uganda	1.61	11	0.29	452.6%
86	Mongolia	1.37	5	0.62	119.1%
87	Malta	1.30	5	0.46	179.4%
88	Senegal	1.17	4	0.56	110.1%
89	Cameroon	1.16	8	0.81	42.9%
90	Uzbekistan	1.16	10	0.17	576.6%
91	Bolivia	1.05	9	0.48	120.2%
92	Mali	1.00	3	0.19	415.5%
93	Macedonia	1.00	6	0.26	290.5%
94	Kuwait	0.95	7	3.17	-70.0%
95	Namibia	0.95	4	0.09	988.5%
96	Burkina Faso	0.93	4	0.05	1,944.6%
97	Azerbaijan	0.92	5	0.56	63.0%
98	Iraq	0.84	12	0.74	13.8%
99	Sri Lanka	0.83	8	0.70	18.6%
100	Kyrgyzstan	0.81	2	0.81	-0.2%

TOP 200 INSTITUTIONS

2014	INSTITUTION	COUNTRY	WFC	ARTICLE COUNT	2013 WFC	2013-2014 CHANGE IN WFC
1	Chinese Academy of Sciences (CAS)	China	1,307.74	3,124	1,209.37	8.1%
2	Harvard University	United States	865.09	2,615	852.85	1.4%
3	French National Centre for Scientific Research (CNRS)	France	761.48	4,907	719.07	5.9%
4	Max Planck Society	Germany	648.86	2,950	727.32	-10.8%
5	Stanford University (SU)	United States	538.57	1,265	550.20	-2.1%
6	Massachusetts Institute of Technology (MIT)	United States	501.38	1,483	507.17	-1.1%
7	The University of Tokyo (UTokyo)	Japan	456.23	1,251	472.88	-3.5%
8	Helmholtz Association of German Research Centres (Helmholtz)	Germany	440.09	1,629	422.02	4.3%
9	University of Cambridge	United Kingdom	403.11	1,384	401.39	0.4%
10	University of California Berkeley (UC Berkeley)	United States	365.55	1,236	362.16	0.9%
11	University of Oxford	United Kingdom	355.99	1,179	382.41	-6.9%
12	Swiss Federal Institute of Technology Zurich (ETH Zurich)	Switzerland	347.29	978	275.31	26.1%
13	National Institutes of Health (NIH)	United States	342.43	771	391.02	-12.4%
14	University of California, San Diego (UC San Diego)	United States	334.34	832	344.80	-3.0%
15	Yale University	United States	303.63	896	289.56	4.9%
16	University of Michigan (U-M)	United States	298.80	855	344.95	-13.4%
17	Peking University (PKU)	China	291.57	937	275.46	5.8%
18	Kyoto University	Japan	286.15	716	313.51	-8.7%
19	The University of Texas at Austin (UT Austin)	United States	274.17	629	246.84	11.1%
20	California Institute of Technology (Caltech)	United States	270.83	1199	280.77	-3.5%
21	University of Toronto (U of T)	Canada	268.61	829	256.09	4.9%
22	University of California Los Angeles (UCLA)	United States	260.59	744	286.64	-9.1%
23	University of Washington (UW)	United States	259.61	766	248.89	4.3%
24	Northwestern University (NU)	United States	259.33	586	298.02	-13.0%
25	Columbia University in the City of New York (CU)	United States	258.13	851	257.32	0.3%
26	University of Pennsylvania (Penn)	United States	252.97	589	295.67	-14.4%
27	Spanish National Research Council (CSIC)	Spain	242.90	1846	240.00	1.2%
28	University of Wisconsin-Madison (UW Madison)	United States	232.81	654	251.98	-7.6%
29	Swiss Federal Institute of Technology in Lausanne (EPFL)	Switzerland	232.70	687	207.58	12.1%
30	The Johns Hopkins University (JHU)	United States	226.16	783	223.91	1.0%
31	Cornell University	United States	226.04	689	247.53	-8.7%
32	Osaka University	Japan	218.77	555	219.88	-0.5%
33	The University of Chicago (UChicago)	United States	208.64	724	190.48	9.5%
34	Princeton University	United States	207.12	680	230.61	-10.2%
35	University of Illinois at Urbana Champaign (UIUC)	United States	206.36	551	229.86	-10.2%
36	Tsinghua University (TH)	China	205.58	611	195.00	5.4%
37	Nanjing University (NJU)	China	202.30	474	196.00	3.2%
38	University of California Santa Barbara (UCSB)	United States	201.06	552	196.04	2.6%
39	Imperial College London (ICL)	United Kingdom	200.52	727	185.01	8.4%
40	Nanyang Technological University (NTU)	Singapore	199.86	371	187.38	6.7%
41	University of Science and Technology of China (USTC)	China	191.75	541	175.73	9.1%
42	National University of Singapore (NUS)	Singapore	190.30	465	191.76	-0.8%
43	Zhejiang University (ZJU)	China	188.48	352	150.42	25.3%
44	University of California San Francisco (UCSF)	United States	188.02	446	221.76	-15.2%
45	University College London (UCL)	United Kingdom	185.66	799	183.78	1.0%
46	Tohoku University	Japan	178.14	426	189.32	-5.9%
47	University of North Carolina at Chapel Hill (UNC)	United States	177.36	387	170.63	3.9%
48	Russian Academy of Sciences (RAS)	Russia	171.47	910	165.96	3.3%
49	Pennsylvania State University (Penn State)	United States	171.14	587	185.84	-7.9%

2014	INSTITUTION	COUNTRY	WFC	ARTICLE COUNT	2013 WFC	2013-2014 CHANGE IN WFC
50	University of California Davis (UC Davis)	United States	169.69	478	183.16	-7.4%
51	Indian Institutes of Technology (IITs)	India	168.18	288	128.43	30.9%
52	Duke University	United States	167.60	501	173.44	-3.4%
53	Fudan University	China	162.59	344	129.22	25.8%
54	University of Maryland, College Park (UMCP)	United States	162.48	740	161.78	0.4%
55	Washington University in St. Louis (WUSTL)	United States	161.42	379	173.04	-6.7%
56	Lawrence Berkeley National Laboratory (LBNL)	United States	161.03	781	153.57	4.9%
57	Seoul National University (SNU)	South Korea	160.31	429	158.14	1.4%
58	University of Minnesota (UMN)	United States	158.05	491	178.08	-11.2%
59	Ludwig Maximilian University of Munich (LMU)	Germany	157.57	627	154.25	2.2%
60	Rutgers, The State University of New Jersey (RU)	United States	148.48	455	154.02	-3.6%
61	RIKEN	Japan	144.43	497	165.96	-13.0%
62	New York University (NYU)	United States	144.08	431	139.91	3.0%
63	University of Colorado Boulder (CU-Boulder)	United States	143.58	553	152.16	-5.6%
64	Weizmann Institute of Science (WIS)	Israel	142.96	296	150.96	-5.3%
65	The Ohio State University (OSU)	United States	142.01	555	142.91	-0.6%
66	The University of Manchester (UoM)	United Kingdom	141.03	565	125.06	12.8%
67	The Scripps Research Institute (TSRI)	United States	134.75	288	178.38	-24.5%
68	McGill University	Canada	133.57	468	136.55	-2.2%
69	National Research Council (CNR)	Italy	130.31	504	150.02	-13.1%
70	The University of British Columbia (UBC)	Canada	130.25	463	130.64	-0.3%
71	University of California Irvine (UCI)	United States	130.13	405	147.32	-11.7%
72	Council of Scientific and Industrial Research (CSIR)	India	128.64	196	115.24	11.6%
73	Texas A&M University (TAMU)	United States	128.34	394	147.32	-12.9%
74	Leibniz Association	Germany	128.11	540	117.56	9.0%
75	Tokyo Institute of Technology (Tokyo Tech)	Japan	127.23	331	105.59	20.5%
76	University of Bristol (UoB)	United Kingdom	125.73	399	109.62	14.7%
77	Nagoya University	Japan	125.28	432	132.97	-5.8%
78	University of Copenhagen (UCPH)	Denmark	124.84	615	117.29	6.4%
79	Purdue University	United States	123.37	349	112.74	9.4%
80	University of Pittsburgh (Pitt)	United States	122.10	380	148.22	-17.6%
81	Technical University Munich (TUM)	Germany	121.39	477	125.21	-3.1%
82	Vanderbilt University (VU)	United States	121.38	368	101.83	19.2%
83	The University of Texas Southwestern Medical Center (UT Southwestern Medical Center)	United States	117.93	229	124.11	-5.0%
84	Korea Advanced Institute of Science and Technology (KAIST)	South Korea	116.39	228	103.03	13.0%
85	Argonne National Laboratory (ANL)	United States	113.69	475	113.74	0.0%
86	Atomic Energy and Alternative Energies Commission (CEA)	France	112.95	1080	138.71	-18.6%
87	The University of Edinburgh	United Kingdom	112.04	796	110.44	1.4%
88	Indiana University (IU)	United States	111.67	354	119.17	-6.3%
89	University of Southern California (USC)	United States	111.59	270	127.44	-12.4%
90	Heidelberg University (Uni Heidelberg)	Germany	111.39	631	105.66	5.4%
91	University of Geneva (UNIGE)	Switzerland	111.18	446	108.07	2.9%
92	The University of Queensland (UQ)	Australia	108.83	392	94.78	14.8%
93	Georgia Institute of Technology (Georgia Tech)	United States	108.31	267	137.43	-21.2%
94	Emory University	United States	107.54	239	108.36	-0.8%
95	National Taiwan University (NTU)	Taiwan	107.49	299	102.57	4.8%
96	University of Florida (UF)	United States	106.90	414	105.28	1.5%
97	Shanghai Jiao Tong University (SJTU)	China	106.84	282	96.01	11.3%
98	Lanzhou University (LZU)	China	106.31	176	69.71	52.5%
99	University of Utah (Utah)	United States	105.95	282	113.06	-6.3%
100	Monash University	Australia	103.11	382	94.89	8.7%

2014	INSTITUTION	COUNTRY	WFC	ARTICLE COUNT	2013 WFC	2013-2014 CHANGE IN WFC
101	Los Alamos National Laboratory (LANL)	United States	102.26	375	115.64	-11.6%
102	University of Münster (WWU)	Germany	101.94	221	94.17	8.2%
103	Jilin University (JLU)	China	101.87	184	97.72	4.2%
104	University of Zurich (UZH)	Switzerland	101.37	422	104.36	-2.9%
105	National Institute for Material Science (NIMS)	Japan	100.71	240	81.79	23.1%
106	Pierre and Marie Curie University (UPMC)	France	100.44	1,372	96.46	4.1%
107	Agency for Science, Technology and Research (A*STAR)	Singapore	100.33	284	81.62	22.9%
108	Hokkaido University (HU)	Japan	100.03	234	105.93	-5.6%
109	Utrecht University (UU)	Netherlands	99.89	475	111.50	-10.4%
110	Kyushu University	Japan	98.31	275	84.56	16.3%
111	Rice University	United States	97.96	275	82.53	18.7%
112	University of Alberta (U of A)	Canada	97.78	295	101.74	-3.9%
113	University of Göttingen	Germany	97.69	369	98.58	-0.9%
114	Hebrew University of Jerusalem (HUJI)	Israel	95.18	245	91.30	4.3%
115	University of California Riverside (UCR)	United States	94.82	279	77.71	22.0%
116	University of Groningen (RUG)	Netherlands	94.80	425	74.72	26.9%
117	University of Würzburg	Germany	93.86	260	95.03	-1.2%
118	Indian Institute of Science (IISc)	India	93.72	149	83.64	12.0%
119	Nankai University (NKU)	China	93.09	222	113.52	-18.0%
120	Xiamen University (XMU)	China	92.73	204	76.02	22.0%
121	National Institute of Standards and Technology (NIST)	United States	92.54	329	88.53	4.5%
122	University of Rochester (UR)	United States	92.34	291	104.73	-11.8%
123	Boston University (BU)	United States	92.14	389	99.12	-7.0%
124	University of Basel	Switzerland	90.89	251	87.67	3.7%
125	Wuhan University (WHU)	China	90.67	154	98.80	-8.2%
126	Sichuan University (SCU)	China	89.44	167	76.83	16.4%
127	University of Leuven (KU Leuven)	Belgium	88.93	393	91.46	-2.8%
128	National Aeronautics and Space Administration (NASA)	United States	88.79	1,006	94.01	-5.6%
129	Memorial Sloan-Kettering Cancer Center (MSKCC)	United States	88.29	217	75.15	17.5%
130	University of New South Wales (UNSW)	Australia	88.11	277	69.81	26.2%
131	University of Chinese Academy of Sciences (UCAS)	China	88.05	516	71.24	23.6%
132	Sun Yat-sen University (SYSU)	China	87.87	191	79.43	10.6%
133	The University of Arizona (UA)	United States	87.57	522	78.02	12.2%
134	Australian National University (ANU)	Australia	87.16	498	93.53	-6.8%
135	Tel Aviv University (TAU)	Israel	86.99	318	78.16	11.3%
136	Soochow University	China	86.12	158	65.31	31.9%
137	Baylor College of Medicine (BCM)	United States	85.63	213	76.15	12.5%
138	Aarhus University (AU)	Denmark	85.28	294	77.35	10.3%
139	University of Erlangen-Nuremberg (FAU)	Germany	84.46	248	84.55	-0.1%
140	Oak Ridge National Laboratory (ORNL)	United States	84.36	269	86.77	-2.8%
141	Brown University	United States	83.87	245	71.51	17.3%
142	Humboldt University of Berlin (HU Berlin)	Germany	83.71	356	76.98	8.7%
143	The University of Melbourne (UniMelb)	Australia	82.60	478	89.76	-8.0%
144	Academia Sinica	Taiwan	81.82	476	80.21	2.0%
145	U.S. Department of Energy (DOE)	United States	81.44	173	74.77	8.9%
146	The University of Virginia (UVA)	United States	81.39	319	77.87	4.5%
147	Lund University (LU)	Sweden	81.10	328	72.99	11.1%
148	East China Normal University (ECNU)	China	80.63	144	65.56	23.0%
149	National Institute for Health and Medical Research (INSERM)	France	80.44	654	70.08	14.8%
150	University of Bonn (Uni Bonn)	Germany	80.37	464	78.01	3.0%

2014	INSTITUTION	COUNTRY	WFC	ARTICLE COUNT	2013 WFC	2013-2014 CHANGE IN WFC
151	Arizona State University (ASU)	United States	79.94	255	80.58	-0.8%
152	The University of Sydney (USYD)	Australia	79.89	492	95.14	-16.0%
153	University of Southampton (Soton)	United Kingdom	79.04	315	85.53	-7.6%
154	Technion-Israel Institute of Technology (IIT)	Israel	78.91	231	67.90	16.2%
155	University of Montreal	Canada	78.01	327	68.73	13.5%
156	Stony Brook University (SBU)	United States	77.80	302	78.79	-1.3%
157	Brookhaven National Laboratory (BNL)	United States	77.63	323	67.83	14.4%
158	University of Freiburg	Germany	77.39	282	72.75	6.4%
159	Uppsala University (UU)	Sweden	76.75	351	80.05	-4.1%
160	Durham University	United Kingdom	76.61	386	84.05	-8.8%
161	The University of Nottingham (UoN)	United Kingdom	76.54	236	74.17	3.2%
162	University of Hamburg (UHH)	Germany	76.48	361	83.82	-8.8%
163	Indian Institute of Science Education and Research (IISER)	India	75.88	106	58.72	29.2%
164	RWTH Aachen University (RWTH Aachen)	Germany	75.57	255	87.18	-13.3%
165	Case Western Reserve University (CWRU)	United States	75.33	201	76.24	-1.2%
166	Joseph Fourier University (UJF)	France	74.84	682	69.43	7.8%
167	Leiden University	Netherlands	73.69	482	73.08	0.8%
168	Hong Kong University of Science and Technology (HKUST)	China	73.59	133	54.60	34.8%
169	Hunan University (HNU)	China	73.23	105	54.57	34.2%
170	Iowa State University (ISU)	United States	72.56	208	78.91	-8.0%
171	Medical Research Council (MRC)	United Kingdom	71.76	470	67.17	6.8%
172	The University of Hong Kong (HKU)	China	71.75	185	71.38	0.5%
173	Radboud University Nijmegen (RU)	Netherlands	71.73	461	63.38	13.2%
174	University of Waterloo	Canada	71.02	199	61.22	16.0%
175	Yonsei University	South Korea	71.02	201	61.62	15.3%
176	Karolinska Institute (KI)	Sweden	70.88	234	59.23	19.7%
177	University of Massachusetts Medical School (UMMS)	United States	70.59	143	72.00	-2.0%
178	Pohang University of Science and Technology (POSTECH)	South Korea	70.38	151	70.00	0.5%
179	University of Notre Dame	United States	70.37	258	86.33	-18.5%
180	University of Cologne (UoC)	Germany	69.90	235	57.15	22.3%
181	University of California Santa Cruz (UCSC)	United States	69.85	537	58.03	20.4%
182	National Institute of Advanced Industrial Science and Technology (AIST)	Japan	69.79	185	79.48	-12.2%
183	University of Warwick (Warwick)	United Kingdom	69.68	392	61.07	14.1%
184	King's College London (KCL)	United Kingdom	69.57	239	71.59	-2.8%
185	The Rockefeller University	United States	69.55	207	82.62	-15.8%
186	University of Barcelona (UB)	Spain	68.98	608	72.14	-4.4%
187	Xi'an Jiaotong University (XJTU)	China	67.98	167	42.98	58.2%
188	Stockholm University	Sweden	67.67	416	71.69	-5.6%
189	East China University of Science and Technology (ECUST)	China	67.48	119	56.75	18.9%
190	University of Sheffield	United Kingdom	66.68	266	67.59	-1.3%
191	University of Tübingen	Germany	66.65	279	77.43	-13.9%
192	University of Amsterdam (UvA)	Netherlands	66.56	532	60.41	10.2%
193	University of Paris Sud (Paris 11)	France	65.88	611	72.33	-8.9%
194	University of Glasgow	United Kingdom	65.30	539	66.48	-1.8%
195	National Tsing Hua University (NTHU)	Taiwan	65.28	171	66.23	-1.4%
196	University of Ottawa (uOttawa)	Canada	64.43	147	59.20	8.8%
197	The University of Texas MD Anderson Cancer Center	United States	64.21	178	65.99	-2.7%
198	Icahn School of Medicine at Mount Sinai (ISMMS)	United States	64.14	200	53.91	19.0%
199	University of Regensburg (UR)	Germany	63.91	131	53.73	18.9%
200	Technische Universität Berlin (TU Berlin)	Germany	63.52	141	55.40	14.7%

TOP INSTITUTIONS: LIFE SCIENCES

2014	INSTITUTION	COUNTRY	WFC	ARTICLE COUNT	2013 WFC	2013-2014 CHANGE IN WFC
1	Harvard University	United States	610.16	1,363	587.65	3.8%
2	National Institutes of Health (NIH)	United States	320.93	728	369.99	-13.3%
3	Stanford University (SU)	United States	226.07	465	245.14	-7.8%
4	Max Planck Society	Germany	225.42	707	216.73	4.0%
5	Massachusetts Institute of Technology (MIT)	United States	182.86	578	183.17	-0.2%
6	Yale University	United States	179.07	400	189.31	-5.4%
7	University of California San Francisco (UCSF)	United States	177.02	418	211.77	-16.4%
8	University of California, San Diego (UC San Diego)	United States	168.43	390	182.69	-7.8%
9	University of Toronto (U of T)	Canada	157.03	381	128.58	22.1%
10	Chinese Academy of Sciences (CAS)	China	155.22	420	147.94	4.9%
11	French National Centre for Scientific Research (CNRS)	France	155.06	972	145.94	6.2%
12	University of Oxford	United Kingdom	152.07	420	147.83	2.9%
13	The Johns Hopkins University (JHU)	United States	146.19	333	140.18	4.3%
14	Columbia University in the City of New York (CU)	United States	142.53	368	127.22	12.0%
15	University of Pennsylvania (Penn)	United States	141.62	320	175.58	-19.3%
16	University of Michigan (U-M)	United States	133.65	304	143.00	-6.5%
17	University of Cambridge	United Kingdom	133.57	399	155.77	-14.3%
18	University of Washington (UW)	United States	125.90	339	137.32	-8.3%
19	University of California Los Angeles (UCLA)	United States	123.06	313	126.98	-3.1%
20	University of California Berkeley (UC Berkeley)	United States	121.51	300	126.58	-4.0%
21	Washington University in St. Louis (WUSTL)	United States	121.40	279	137.34	-11.6%
22	Cornell University	United States	113.45	346	140.95	-19.5%
23	Duke University	United States	112.08	320	113.86	-1.6%
24	University College London (UCL)	United Kingdom	106.93	331	115.85	-7.7%
25	The University of Texas Southwestern Medical Center (UT Southwestern Medical Center)	United States	104.98	211	107.98	-2.8%
26	The University of Tokyo (UTokyo)	Japan	99.33	262	112.60	-11.8%
27	New York University (NYU)	United States	99.21	238	92.73	7.0%
28	University of North Carolina at Chapel Hill (UNC)	United States	97.89	240	93.85	4.3%
29	The University of Chicago (UChicago)	United States	94.05	234	93.92	0.1%
30	University of Wisconsin-Madison (UW Madison)	United States	92.41	182	87.38	5.8%
31	Helmholtz Association of German Research Centres (Helmholtz)	Germany	90.06	432	85.65	5.2%
32	Baylor College of Medicine (BCM)	United States	84.40	210	74.30	13.6%
33	Vanderbilt University (VU)	United States	80.27	196	74.80	7.3%
34	University of California Davis (UC Davis)	United States	79.61	194	90.61	-12.1%
35	Memorial Sloan-Kettering Cancer Center (MSKCC)	United States	77.02	194	68.47	12.5%
36	Swiss Federal Institute of Technology Zurich (ETH Zurich)	Switzerland	76.08	207	46.48	63.7%
37	Northwestern University (NU)	United States	75.07	172	91.03	-17.5%
38	Emory University	United States	74.39	181	66.89	11.2%
39	University of Pittsburgh (Pitt)	United States	73.58	180	81.12	-9.3%
40	National Institute for Health and Medical Research (INSERM)	France	71.33	575	62.47	14.2%
41	The Scripps Research Institute (TSRI)	United States	71.09	193	95.51	-25.6%
42	McGill University	Canada	71.03	208	78.78	-9.8%
43	Rutgers, The State University of New Jersey (RU)	United States	71.00	163	61.90	14.7%
44	University of Massachusetts Medical School (UMMS)	United States	66.97	137	69.40	-3.5%
45	Spanish National Research Council (CSIC)	Spain	66.91	295	62.94	6.3%
46	The Rockefeller University	United States	66.68	146	77.26	-13.7%
47	Karolinska Institute (KI)	Sweden	65.96	222	55.50	18.8%
48	Imperial College London (ICL)	United Kingdom	65.08	244	54.58	19.2%
49	The University of British Columbia (UBC)	Canada	64.55	175	53.90	19.8%
50	Icahn School of Medicine at Mount Sinai (ISMMS)	United States	63.95	198	52.10	22.8%

TOP INSTITUTIONS: EARTH & ENVIRONMENTAL SCIENCES

2014	INSTITUTION	COUNTRY	WFC	ARTICLE COUNT	2013 WFC	2013-2014 CHANGE IN WFC
1	Chinese Academy of Sciences (CAS)	China	74.88	192	77.12	-2.9%
2	French National Centre for Scientific Research (CNRS)	France	74.14	479	56.92	30.2%
3	Helmholtz Association of German Research Centres (Helmholtz)	Germany	68.96	205	63.81	8.1%
4	University of California, San Diego (UC San Diego)	United States	54.32	131	47.45	14.5%
5	National Aeronautics and Space Administration (NASA)	United States	52.68	200	57.95	-9.1%
6	National Oceanic and Atmospheric Administration (NOAA)	United States	50.32	165	59.91	-16.0%
7	California Institute of Technology (Caltech)	United States	50.17	156	50.91	-1.5%
8	University of Washington (UW)	United States	49.12	111	42.34	16.0%
9	Swiss Federal Institute of Technology Zurich (ETH Zurich)	Switzerland	41.69	119	33.17	25.7%
10	Woods Hole Oceanographic Institution (WHOI)	United States	41.31	107	31.00	33.3%
11	U.S. Geological Survey (USGS)	United States	38.62	104	39.76	-2.9%
12	The University of Texas at Austin (UT Austin)	United States	37.58	83	21.11	78.0%
13	Massachusetts Institute of Technology (MIT)	United States	37.09	100	20.62	79.8%
14	University of Colorado Boulder (CU-Boulder)	United States	36.78	132	44.08	-16.6%
15	The University of Tokyo (UTokyo)	Japan	36.65	85	37.33	-1.8%
16	Columbia University in the City of New York (CU)	United States	32.65	105	41.25	-20.8%
17	Pennsylvania State University (Penn State)	United States	32.14	66	20.15	59.5%
18	University of California Berkeley (UC Berkeley)	United States	30.95	91	22.97	34.8%
19	University of Cambridge	United Kingdom	28.08	75	18.75	49.7%
20	National Center for Atmospheric Research (NCAR)	United States	25.08	81	25.37	-1.2%
21	Stanford University (SU)	United States	24.65	64	32.09	-23.2%
22	University of Hawaii at Manoa (UH Manoa)	United States	23.86	75	28.04	-14.9%
23	Utrecht University (UU)	Netherlands	23.00	59	21.31	8.0%
24	University of California Davis (UC Davis)	United States	22.96	59	16.60	38.3%
25	Japan Agency for Marine-Earth Science and Technology (JAMSTEC)	Japan	22.61	71	28.62	-21.0%
26	University of Maryland, College Park (UMCP)	United States	22.51	86	15.96	41.1%
27	Princeton University	United States	22.41	72	20.74	8.1%
28	Institute of Research for Development (IRD)	France	22.18	265	16.82	31.8%
29	Spanish National Research Council (CSIC)	Spain	22.02	97	18.56	18.6%
30	Yale University	United States	21.88	52	17.51	25.0%
31	Australian National University (ANU)	Australia	20.98	70	18.55	13.1%
32	University of Bristol (UoB)	United Kingdom	20.51	57	17.84	15.0%
33	University of Wisconsin-Madison (UW Madison)	United States	20.22	64	24.37	-17.0%
34	University of Oxford	United Kingdom	20.05	77	33.87	-40.8%
35	Harvard University	United States	19.46	61	32.26	-39.7%
36	University of California Los Angeles (UCLA)	United States	19.05	54	20.81	-8.5%
37	Max Planck Society	Germany	18.91	86	23.81	-20.6%
38	Oregon State University (OSU)	United States	18.91	50	19.77	-4.4%
39	The University of Arizona (UA)	United States	18.19	56	15.43	17.9%
40	University of Bremen	Germany	18.17	52	9.65	88.4%
41	University of Toronto (U of T)	Canada	18.16	43	12.10	50.1%
42	National Institute of Geophysics and Volcanology (INGV)	Italy	17.95	41	18.73	-4.2%
43	Brown University	United States	17.95	43	8.59	108.9%
44	University of Minnesota (UMN)	United States	17.93	57	15.15	18.4%
45	Colorado State University (CSU)	United States	17.51	47	17.98	-2.6%
46	The Commonwealth Scientific and Industrial Research Organisation (CSIRO)	Australia	17.34	63	16.92	2.4%
47	Paris Diderot University (Paris 7)	France	17.07	83	8.17	108.9%
48	University of Florida (UF)	United States	16.88	44	16.78	0.6%
49	University of Miami (UM)	United States	16.25	35	10.15	60.1%
50	U.S. Department of Energy (DOE)	United States	16.04	47	16.44	-2.4%

TOP INSTITUTIONS: CHEMISTRY

2014	INSTITUTION	COUNTRY	WFC	ARTICLE COUNT	2013 WFC	2013-2014 CHANGE IN WFC
1	Chinese Academy of Sciences (CAS)	China	771.24	1,396	681.87	13.1%
2	French National Centre for Scientific Research (CNRS)	France	251.51	921	227.97	10.3%
3	Max Planck Society	Germany	184.21	425	202.85	-9.2%
4	Massachusetts Institute of Technology (MIT)	United States	169.74	274	164.75	3.0%
5	Stanford University (SU)	United States	159.72	254	145.69	9.6%
6	Peking University (PKU)	China	151.32	366	142.68	6.1%
7	Kyoto University	Japan	151.26	237	157.12	-3.7%
8	The University of Tokyo (UTokyo)	Japan	143.72	228	159.48	-9.9%
9	Nanyang Technological University (NTU)	Singapore	143.06	217	123.90	15.5%
10	Harvard University	United States	141.23	256	143.52	-1.6%
11	University of California Berkeley (UC Berkeley)	United States	140.86	289	131.56	7.1%
12	Northwestern University (NU)	United States	136.36	211	152.92	-10.8%
13	Swiss Federal Institute of Technology Zurich (ETH Zurich)	Switzerland	127.29	217	102.80	23.8%
14	University of Oxford	United Kingdom	126.10	202	119.39	5.6%
15	Zhejiang University (ZJU)	China	125.25	178	86.42	44.9%
16	Nanjing University (NJU)	China	120.32	207	117.34	2.5%
17	Swiss Federal Institute of Technology in Lausanne (EPFL)	Switzerland	116.01	219	80.35	44.4%
18	Fudan University	China	114.02	186	80.10	42.3%
19	The University of Texas at Austin (UT Austin)	United States	112.69	161	109.67	2.7%
20	University of Cambridge	United Kingdom	110.12	186	105.84	4.0%
21	University of Illinois at Urbana Champaign (UIUC)	United States	108.91	191	115.67	-5.8%
22	Helmholtz Association of German Research Centres (Helmholtz)	Germany	108.35	302	91.62	18.3%
23	University of Science and Technology of China (USTC)	China	108.19	223	93.78	15.4%
24	Indian Institutes of Technology (IITs)	India	106.58	141	74.77	42.6%
25	Osaka University	Japan	105.69	171	106.33	-0.6%
26	Tsinghua University (TH)	China	101.79	201	92.06	10.6%
27	University of Wisconsin-Madison (UW Madison)	United States	96.53	139	105.23	-8.3%
28	National University of Singapore (NUS)	Singapore	93.39	177	83.81	11.4%
29	California Institute of Technology (Caltech)	United States	92.35	144	107.31	-13.9%
30	Council of Scientific and Industrial Research (CSIR)	India	90.40	117	79.46	13.8%
31	Lawrence Berkeley National Laboratory (LBNL)	United States	85.03	248	74.57	14.0%
32	Lanzhou University (LZU)	China	84.31	118	50.35	67.5%
33	University of California Santa Barbara (UCSB)	United States	83.37	137	62.14	34.2%
34	University of Pennsylvania (Penn)	United States	82.19	124	80.23	2.4%
35	Tohoku University	Japan	81.32	138	62.89	29.3%
36	The Scripps Research Institute (TSRI)	United States	79.61	130	101.52	-21.6%
37	University of California, San Diego (UC San Diego)	United States	79.07	134	78.52	0.7%
38	Jilin University (JLU)	China	77.57	128	73.88	5.0%
39	University of California Los Angeles (UCLA)	United States	75.45	134	87.43	-13.7%
40	University of North Carolina at Chapel Hill (UNC)	United States	74.34	101	75.09	-1.0%
41	The University of Manchester (UoM)	United Kingdom	73.82	132	53.06	39.1%
42	Imperial College London (ICL)	United Kingdom	73.20	126	62.12	17.8%
43	Korea Advanced Institute of Science and Technology (KAIST)	South Korea	73.03	133	56.93	28.3%
44	University of Michigan (U-M)	United States	72.80	112	92.32	-21.1%
45	Xiamen University (XMU)	China	71.25	138	59.87	19.0%
46	Ludwig Maximilian University of Munich (LMU)	Germany	71.20	130	55.22	28.9%
47	Yale University	United States	71.10	122	46.80	51.9%
48	Sichuan University (SCU)	China	70.75	98	68.45	3.4%
49	University of Toronto (U of T)	Canada	69.01	120	85.42	-19.2%
50	Seoul National University (SNU)	South Korea	68.64	111	70.70	-2.9%

TOP INSTITUTIONS: PHYSICAL SCIENCES

2014	INSTITUTION	COUNTRY	WFC	ARTICLE COUNT	2013 WFC	2013-2014 CHANGE IN WFC
1	Chinese Academy of Sciences (CAS)	China	413.44	1,376	406.86	1.6%
2	French National Centre for Scientific Research (CNRS)	France	333.36	2,812	335.41	-0.6%
3	Max Planck Society	Germany	300.72	1,948	353.91	-15.0%
4	Stanford University (SU)	United States	221.86	652	211.18	5.1%
5	Helmholtz Association of German Research Centres (Helmholtz)	Germany	213.14	819	217.24	-1.9%
6	Massachusetts Institute of Technology (MIT)	United States	212.29	718	226.42	-6.2%
7	The University of Tokyo (UTokyo)	Japan	204.65	737	193.50	5.8%
8	Harvard University	United States	200.80	1,149	191.30	5.0%
9	University of Cambridge	United Kingdom	187.59	839	170.15	10.3%
10	University of California Berkeley (UC Berkeley)	United States	149.28	735	135.57	10.1%
11	Swiss Federal Institute of Technology Zurich (ETH Zurich)	Switzerland	140.09	520	132.35	5.8%
12	University of California Santa Barbara (UCSB)	United States	115.63	377	120.80	-4.3%
13	University of Oxford	United Kingdom	113.00	594	126.23	-10.5%
14	University of Michigan (U-M)	United States	112.36	464	121.38	-7.4%
15	Peking University (PKU)	China	111.97	454	105.09	6.6%
16	Russian Academy of Sciences (RAS)	Russia	111.96	724	109.38	2.4%
17	Spanish National Research Council (CSIC)	Spain	108.99	1,281	98.40	10.8%
18	Swiss Federal Institute of Technology in Lausanne (EPFL)	Switzerland	104.69	401	102.90	1.7%
19	Princeton University	United States	102.49	469	114.36	-10.4%
20	The University of Texas at Austin (UT Austin)	United States	98.37	330	98.67	-0.3%
21	Tsinghua University (TH)	China	98.25	363	87.94	11.7%
22	California Institute of Technology (Caltech)	United States	95.56	839	100.29	-4.7%
23	University of Maryland, College Park (UMCP)	United States	90.92	542	96.06	-5.4%
24	University of Illinois at Urbana-Champaign (UIUC)	United States	86.99	297	111.83	-22.2%
25	Lawrence Berkeley National Laboratory (LBNL)	United States	86.75	514	76.52	13.4%
26	University of California Los Angeles (UCLA)	United States	81.40	314	97.72	-16.7%
27	National University of Singapore (NUS)	Singapore	80.80	171	88.74	-8.9%
28	Kyoto University	Japan	77.15	330	91.02	-15.2%
29	Los Alamos National Laboratory (LANL)	United States	76.30	289	84.24	-9.4%
30	National Research Council (CNR)	Italy	75.80	282	93.70	-19.1%
31	Tohoku University	Japan	75.65	211	96.92	-22.0%
32	The University of Chicago (UChicago)	United States	75.47	392	63.01	19.8%
33	University of Science and Technology of China (USTC)	China	74.91	301	71.40	4.9%
34	University of California, San Diego (UC San Diego)	United States	74.21	259	73.71	0.7%
35	Nanyang Technological University (NTU)	Singapore	72.88	141	71.87	1.4%
36	Seoul National University (SNU)	South Korea	72.34	242	66.08	9.5%
37	Imperial College London (ICL)	United Kingdom	71.34	370	79.35	-10.1%
38	Northwestern University (NU)	United States	71.33	239	91.07	-21.7%
39	Pennsylvania State University (Penn State)	United States	68.96	369	77.44	-10.9%
40	Cornell University	United States	68.66	265	73.02	-6.0%
41	National Institute of Standards and Technology (NIST)	United States	68.50	254	67.83	1.0%
42	Nanjing University (NJU)	China	68.43	233	64.94	5.4%
43	National Institute for Material Science (NIMS)	Japan	68.14	166	43.97	55.0%
44	Osaka University	Japan	67.71	245	62.61	8.1%
45	Yale University	United States	66.85	382	60.96	9.7%
46	University of Colorado Boulder (CU-Boulder)	United States	66.06	338	55.85	18.3%
47	Atomic Energy and Alternative Energies Commission (CEA)	France	65.66	765	91.23	-28.0%
48	Argonne National Laboratory (ANL)	United States	63.52	313	70.93	-10.4%
49	Columbia University in the City of New York (CU)	United States	61.89	351	74.99	-17.5%
50	Korea Advanced Institute of Science and Technology (KAIST)	South Korea	58.92	103	49.76	18.4%

TOP INSTITUTIONS IN NATURE AND SCIENCE JOURNALS

2014	INSTITUTION	COUNTRY	WFC	ARTICLE COUNT	2013 WFC	2013-2014 CHANGE IN WFC
1	Harvard University	United States	75.39	210	76.41	-1.3%
2	Stanford University (SU)	United States	41.44	103	38.30	8.2%
3	Massachusetts Institute of Technology (MIT)	United States	34.13	123	45.59	-25.1%
4	Max Planck Society	Germany	30.40	120	32.87	-7.5%
5	National Institutes of Health (NIH)	United States	24.04	69	27.57	-12.8%
6	University of California Berkeley (UC Berkeley)	United States	21.35	95	21.58	-1.1%
7	University of Washington (UW)	United States	20.63	63	14.49	42.3%
8	University of California, San Diego (UC San Diego)	United States	20.29	54	17.83	13.9%
9	Yale University	United States	20.16	56	17.04	18.3%
10	French National Centre for Scientific Research (CNRS)	France	19.46	166	15.12	28.7%
11	California Institute of Technology (Caltech)	United States	18.61	62	12.73	46.2%
12	University of Cambridge	United Kingdom	18.12	82	20.69	-12.4%
13	University of California San Francisco (UCSF)	United States	17.96	48	24.04	-25.3%
14	University of Oxford	United Kingdom	17.79	60	13.84	28.5%
15	Columbia University in the City of New York (CU)	United States	17.45	64	19.75	-11.6%
16	Helmholtz Association of German Research Centres (Helmholtz)	Germany	16.66	80	10.95	52.1%
17	The Scripps Research Institute (TSRI)	United States	14.18	35	18.43	-23.1%
18	The University of Tokyo (UTokyo)	Japan	13.21	44	15.55	-15.1%
19	Chinese Academy of Sciences (CAS)	China	13.11	58	18.71	-29.9%
20	University of Michigan (U-M)	United States	13.04	44	9.36	39.3%
21	Weizmann Institute of Science (WIS)	Israel	12.91	22	6.67	93.5%
22	Swiss Federal Institute of Technology Zurich (ETH Zurich)	Switzerland	12.74	43	13.98	-8.9%
23	Princeton University	United States	12.29	32	13.50	-9.0%
24	The University of Texas at Austin (UT Austin)	United States	12.20	40	4.60	165.3%
25	Cornell University	United States	11.83	55	13.31	-11.1%
26	The Johns Hopkins University (JHU)	United States	11.82	39	12.33	-4.1%
27	Washington University in St. Louis (WUSTL)	United States	11.40	40	8.41	35.6%
28	Medical Research Council (MRC)	United Kingdom	11.34	24	9.29	22.0%
29	University of Wisconsin-Madison (UW Madison)	United States	11.14	35	3.16	252.1%
30	Memorial Sloan-Kettering Cancer Center (MSKCC)	United States	10.81	29	5.08	112.9%
31	New York University (NYU)	United States	10.54	25	10.55	-0.1%
32	University of California Los Angeles (UCLA)	United States	10.35	41	12.75	-18.8%
33	The University of Texas Southwestern Medical Center (UT Southwestern Medical Center)	United States	9.88	20	11.79	-16.2%
34	The University of Chicago (UChicago)	United States	9.33	47	11.75	-20.6%
35	F. Hoffmann-La Roche Ltd	Switzerland	9.18	20	2.58	255.9%
36	The Rockefeller University	United States	9.14	20	11.45	-20.2%
37	University of Pennsylvania (Penn)	United States	9.01	30	10.23	-11.9%
38	Lawrence Berkeley National Laboratory (LBNL)	United States	9.00	52	5.97	50.7%
39	University of California Santa Cruz (UCSC)	United States	8.93	37	4.54	96.6%
40	University of Toronto (U of T)	Canada	8.64	38	15.70	-44.9%
41	Duke University	United States	8.55	33	7.14	19.8%
42	University of Maryland, College Park (UMCP)	United States	8.49	40	5.21	63.1%
43	Kyoto University	Japan	7.44	25	7.48	-0.5%
44	University of Copenhagen (UCPH)	Denmark	7.43	50	5.11	45.6%
45	RIKEN	Japan	7.33	32	9.62	-23.8%
46	University of California Davis (UC Davis)	United States	7.13	29	8.06	-11.6%
47	University College London (UCL)	United Kingdom	7.10	41	7.69	-7.6%
48	Pennsylvania State University (Penn State)	United States	7.01	25	6.26	11.9%
49	University of Zurich (UZH)	Switzerland	6.70	19	4.81	39.1%
50	Peking University (PKU)	China	6.48	28	4.10	58.0%

Weighted fractional count (WFC) for each institution is shown to two decimal places only. When two or more institutions have the same WFC, their positions are determined by the thousandth place (or beyond).

These results are based on the most recent data available as of 11 September 2014. Owing to continual refinements of the data, the figures in the database are liable to change and might differ to those printed in the supplements.

Nature Index tables

Asia-Pacific's leading institutions for high-quality science, ordered by weighted fractional count (WFC) for 2014. Also shown are the total number of articles, and the change in WFC from 2013. Articles are from the 68 natural science journals that comprise the Nature Index (see A guide to the Nature Index, page S75).

TOP INSTITUTIONAL CONTRIBUTORS

2014	INSTITUTION	COUNTRY	WFC	ARTICLE COUNT	2013 WFC	2013-2014 CHANGE IN WFC
1	Chinese Academy of Sciences (CAS)	China	1,303.86	3,114	1,207.39	8%
2	The University of Tokyo (UTokyo)	Japan	453.45	1,242	472.87	-4.1%
3	Peking University (PKU)	China	291.45	932	275.46	5.8%
4	Kyoto University	Japan	286.13	714	313.51	-8.7%
5	Osaka University	Japan	218.62	553	219.88	-0.6%
6	Tsinghua University (TH)	China	205.48	605	194.93	5.4%
7	Nanjing University (NJU)	China	201.91	469	196.00	3%
8	Nanyang Technological University (NTU)	Singapore	199.86	371	187.38	6.7%
9	University of Science and Technology of China (USTC)	China	190.96	536	175.73	8.7%
10	National University of Singapore (NUS)	Singapore	190.30	465	191.72	-0.7%
11	Zhejiang University (ZJU)	China	188.39	349	150.42	25.2%
12	Tohoku University	Japan	177.99	423	189.01	-5.8%
13	Indian Institutes of Technology (IITs)	India	168.17	287	128.43	30.9%
14	Fudan University	China	162.89	343	129.22	26.1%
15	Seoul National University (SNU)	South Korea	160.24	424	158.13	1.3%
16	RIKEN	Japan	144.14	495	165.95	-13.1%
17	Council of Scientific and Industrial Research (CSIR)	India	128.64	196	115.24	11.6%
18	Tokyo Institute of Technology	Japan	127.21	329	105.59	20.5%
19	Nagoya University	Japan	125.28	431	132.97	-5.8%
20	Korea Advanced Institute of Science and Technology (KAIST)	South Korea	116.33	222	103.03	12.9%
21	The University of Queensland (UQ)	Australia	108.83	392	94.78	14.8%
22	Shanghai Jiao Tong University (SJTU)	China	106.78	281	96.01	11.2%
23	National Taiwan University (NTU)	Taiwan	106.54	294	101.28	5.2%
24	Lanzhou University (LZU)	China	106.27	174	69.71	52.4%
25	Monash University	Australia	102.98	381	94.47	9%
26	Jilin University (JLU)	China	101.87	184	97.72	4.2%
27	Agency for Science, Technology and Research (A*STAR)	Singapore	100.33	284	81.62	22.9%
28	National Institute for Material Science (NIMS)	Japan	100.08	239	81.79	22.4%
29	Hokkaido University (HU)	Japan	100.03	234	105.93	-5.6%
30	Kyushu University	Japan	98.30	274	84.51	16.3%
31	Indian Institute of Science (IISc)	India	93.72	149	83.64	12%
32	Xiamen University (XMU)	China	93.35	205	76.02	22.8%
33	Nankai University	China	91.74	220	113.52	-19.2%
34	Wuhan University (WHU)	China	90.63	152	98.80	-8.3%
35	Sichuan University (SCU)	China	89.40	165	76.82	16.4%
36	The University of New South Wales (UNSW)	Australia	88.12	277	69.81	26.2%
37	University of Chinese Academy of Sciences (UCAS)	China	88.02	514	71.24	23.5%
38	Sun Yat-sen University (SYSU)	China	87.84	189	79.43	10.6%
39	Australian National University (ANU)	Australia	87.16	498	93.53	-6.8%
40	Soochow University	China	86.09	156	65.31	31.8%
41	The University of Melbourne	Australia	82.47	474	89.33	-7.7%

2014	INSTITUTION	COUNTRY	WFC	ARTICLE COUNT	2013 WFC	2013-2014 CHANGE IN WFC
42	Academia Sinica	Taiwan	81.86	482	80.06	2.2%
43	East China Normal University (ECNU)	China	80.63	144	65.56	23%
44	The University of Sydney (USYD)	Australia	79.89	491	95.13	-16%
45	Indian Institute of Science Education and Research (IISER)	India	75.88	106	58.72	29.2%
46	Hong Kong University of Science and Technology (HKUST)	China	73.59	133	54.60	34.8%
47	Hunan University (HNU)	China	73.19	103	54.57	34.1%
48	The University of Hong Kong (HKU)	China	71.71	183	71.38	0.5%
49	Yonsei University	South Korea	71.00	200	61.62	15.2%
50	Pohang University of Science and Technology (POSTECH)	South Korea	70.33	150	70	0.5%
51	National Institute of Advanced Industrial Science and Technology (AIST)	Japan	69.79	185	79.53	-12.2%
52	Xi'an Jiaotong University (XJTU)	China	67.97	166	42.98	58.1%
53	East China University of Science and Technology (ECUST)	China	67.48	119	56.75	18.9%
54	National Tsing Hua University (NTHU)	Taiwan	65.28	171	66.23	-1.4%
55	Shandong University (SDU)	China	62.07	154	39.18	58.4%
56	Korea University (KU)	South Korea	61.21	210	72.01	-15%
57	Sungkyunkwan University (SKKU)	South Korea	58.83	240	50.72	16%
58	Huazhong University of Science & Technology (HUST)	China	56.97	150	43.62	30.6%
59	University of Tsukuba	Japan	53.68	224	50.15	7.1%
60	Southeast University (SEU)	China	52.19	108	30.94	68.6%
61	Dalian University of Technology (DUT)	China	50.61	94	61.42	-17.6%
62	Indian Association for the Cultivation of Science (IACS)	India	49.95	70	51.20	-2.4%
63	Hanyang University (HYU)	South Korea	49.74	127	37.06	34.2%
64	Beijing Normal University (BNU)	China	49.63	142	39.60	25.3%
65	Northeast Normal University (NENU)	China	47.53	66	30.73	54.7%
66	National Chiao Tung University (NCTU)	Taiwan	46.60	99	64.35	-27.6%
67	Tongji University	China	44.86	105	40.83	9.9%
68	Keio University	Japan	44.60	117	58.33	-23.6%
69	South China University of Technology (SCUT)	China	44.59	89	30.74	45.1%
70	Tianjin University (TJU)	China	43.42	145	33.98	27.8%
71	National Institutes of Natural Sciences (NINS)	Japan	40.35	361	46.63	-13.5%
72	The University of Adelaide	Australia	38.73	180	26.69	45.1%
73	Ulsan National Institute of Science and Technology (UNIST)	South Korea	38.28	87	28.42	34.7%
74	The University of Western Australia (UWA)	Australia	37.45	294	44.55	-16%
75	The Chinese University of Hong Kong (CUHK)	China	35.59	107	39.39	-9.6%
76	Fuzhou University	China	34.71	54	26.76	29.7%
77	Chiba University	Japan	34.56	96	36.84	-6.2%
78	The Commonwealth Scientific and Industrial Research Organisation (CSIRO)	Australia	33.01	237	48.86	-32.4%
79	Chinese Academy of Medical Sciences & Peking Union Medical College (CAMS & PUMC)	China	31.37	92	24.72	26.9%
80	City University of Hong Kong	China	31.28	76	36.51	-14.3%
81	Kyung Hee University (KHU)	South Korea	30.98	122	36.22	-14.5%
82	Beijing Institute of Technology (BIT)	China	30.10	63	20.11	49.7%
83	Shanghai University	China	29.81	67	16.49	80.8%
84	Harbin Institute of Technology (HIT)	China	29.73	59	36.22	-17.9%
85	Tata Institute of Fundamental Research (TIFR)	India	29.63	199	54.74	-45.9%
86	Institute for Basic Science (IBS)	South Korea	29.03	116	14.51	100.1%
87	University of Science and Technology Beijing (USTB)	China	28.85	53	25.79	11.9%
88	Ewha Womans University	South Korea	28.67	83	26.13	9.7%
89	Beijing University of Chemical Technology (BUCT)	China	28.34	48	23.45	20.8%
90	Hiroshima University (HU)	Japan	28.15	120	44.45	-36.7%
91	University of Otago	New Zealand	27.79	79	27.20	2.2%
92	Tokyo University of Science (TUS)	Japan	25.48	75	24.75	3%
93	Northwest University (NWU)	China	25.39	39	12.04	110.9%
94	Samsung Electronics Co., Ltd	South Korea	24.96	73	43.55	-42.7%

2014	INSTITUTION	COUNTRY	WFC	ARTICLE COUNT	2013 WFC	2013-2014 CHANGE IN WFC
95	Gwangju Institute of Science and Technology (GIST)	South Korea	24.83	50	20.10	23.5%
96	Jawaharlal Nehru Centre for Advanced Scientific Research (JNCASR)	India	24.13	43	28.77	-16.1%
97	Kanazawa University (KU)	Japan	23.98	49	31.25	-23.3%
98	Okayama University	Japan	23.71	128	26.73	-11.3%
99	Korea Institute of Science and Technology (KIST)	South Korea	23.62	89	25.82	-8.5%
100	Japan Agency for Marine–Earth Science and Technology (JAMSTEC)	Japan	23.60	78	31.54	-25.2%
101	Zhengzhou University	China	23.53	51	13.77	70.9%
102	Osaka Prefecture University (OPU)	Japan	23.42	57	22.41	4.5%
103	Kumamoto University	Japan	22.67	57	18.27	24.1%
104	Beihang University (BUAA)	China	22.50	75	17.71	27%
105	High Energy Accelerator Research Organization (KEK)	Japan	22.34	180	24.05	-7.1%
106	Kobe University	Japan	22.21	136	23.51	-5.5%
107	Southwest University (SWU)	China	21.67	36	16.11	34.5%
108	Waseda University	Japan	21.58	134	25.74	-16.1%
109	Central China Normal University (CCNU)	China	21.08	57	15.93	32.3%
110	The University of Auckland	New Zealand	20.97	132	26.71	-21.5%
111	Nanjing Tech University (NanjingTech)	China	20.74	45	11.92	74%
112	Macquarie University	Australia	19.71	154	19.97	-1.3%
113	Central South University (CSU)	China	19.66	58	10.15	93.6%
114	Harish–Chandra Research Institute (HRI)	India	19.47	40	14.10	38%
115	University of Tasmania (UTAS)	Australia	19.42	106	17.99	7.9%
116	Curtin University	Australia	19.29	194	21.85	-11.7%
117	National Cheng Kung University (NCKU)	Taiwan	19.28	60	33.56	-42.5%
118	University of Hyderabad (UoH)	India	19.04	28	19.10	-0.3%
119	Yokohama City University (YCU)	Japan	18.76	46	10.75	74.5%
120	NTT Group	Japan	18.73	32	28.40	-34%
121	Chongqing University (CQU)	China	18.69	32	12.90	45%
122	Nanjing Normal University (NNU)	China	18.67	46	7.75	140.9%
123	Nara Institute of Science and Technology (NAIST)	Japan	18.64	47	21.24	-12.2%
124	University of Electronic Science and Technology of China (UESTC)	China	18.42	49	11.98	53.7%
125	The Hong Kong Polytechnic University (PolyU)	China	18.40	49	25.94	-29.1%
126	The Graduate University for Advanced Studies (Sokendai)	Japan	18.21	139	19.17	-5%
127	Pusan National University	South Korea	18.20	76	18.26	-0.3%
128	Kangwon National University	South Korea	17.91	72	10.23	75%
129	Shandong Normal University (SDNU)	China	17.88	22	12.73	40.5%
130	National Taiwan Normal University	Taiwan	17.80	45	15.76	12.9%
131	RMIT University	Australia	17.49	42	12.86	36%
132	China University of Geosciences (CUG)	China	17.01	38	14.52	17.2%
133	China Agricultural University (CAU)	China	16.22	43	14.65	10.7%
134	James Cook University (JCU)	Australia	15.98	52	12.98	23%
135	Yunnan University	China	15.77	33	11.39	38.4%
136	National Central University (NCU)	Taiwan	15.60	112	18.56	-15.9%
137	South China Normal University (SCNU)	China	15.59	34	6.87	126.9%
138	Tokyo University of Agriculture and Technology	Japan	15.53	39	22.66	-31.5%
139	Chung–Ang University (CAU)	South Korea	15.47	41	12.71	21.7%
140	Saha Institute of Nuclear Physics (SINP)	India	15.45	100	15.30	1%
141	Wuhan University of Technology (WUT)	China	15.24	28	8.59	77.5%
142	State Oceanic Administration (SOA)	China	15.18	34	5.93	155.9%
143	Henan Normal University	China	14.96	35	12.42	20.4%
144	Kyungpook National University (KNU)	South Korea	14.83	119	13.71	8.2%
145	The University of Wollongong (UOW)	Australia	14.76	57	23.02	-35.9%
146	S. N. Bose National Centre for Basic Sciences (SNBNCBS)	India	14.73	34	10.33	42.6%
147	Ocean University of China (OUC)	China	14.69	38	13.03	12.7%

2014	INSTITUTION	COUNTRY	WFC	ARTICLE COUNT	2013 WFC	2013-2014 CHANGE IN WFC
148	Griffith University	Australia	14.60	69	10	46%
149	Shanxi University	China	14.50	26	10.82	34.1%
150	Ajou University	South Korea	14.46	40	10.58	36.7%
151	Osaka City University	Japan	14.40	56	15.55	-7.4%
152	Toyota Group	Japan	14.14	25	9.42	50.2%
153	Tokyo Metropolitan University	Japan	14.09	108	15.57	-9.5%
154	Huazhong Agricultural University (HZAU)	China	14.05	28	10.57	32.9%
155	China University of Petroleum (UPC)	China	14.00	36	7.15	95.9%
156	Xiangtan University	China	13.83	27	12.87	7.5%
157	Changzhou University	China	13.81	21	5.93	133.1%
158	Northwestern Polytechnical University (NPU)	China	13.80	28	12.90	7%
159	The Walter and Eliza Hall Institute of Medical Research (WEHI)	Australia	13.72	53	12.09	13.5%
160	Nagasaki University	Japan	13.67	31	5.75	137.8%
161	Northeastern University	China	13.66	21	2.10	550%
162	Beijing Genomics Institute (BGI)	China	13.64	59	15.34	-11.1%
163	Swinburne University of Technology	Australia	13.54	201	19.56	-30.8%
164	Gyeongsang National University	South Korea	13.37	45	10.82	23.6%
165	Sogang University	South Korea	13.36	28	27.88	-52.1%
166	Beijing University of Technology (BJUT)	China	13.27	29	7.67	73%
167	Shanghai Normal University (SHNU)	China	13.20	24	3.75	251.8%
168	Japan Atomic Energy Agency (JAEA)	Japan	13.14	66	13.76	-4.5%
169	Shaanxi Normal University (SXU)	China	13.08	23	11.80	10.8%
170	National Sun Yat-Sen University (NSYSU)	Taiwan	12.78	29	25.98	-50.8%
171	Ehime University	Japan	12.74	70	15.11	-15.7%
172	Tokyo Medical and Dental University (TMDU)	Japan	12.68	56	16.00	-20.8%
173	Second Military Medical University (SMMU)	China	12.62	41	16.99	-25.7%
174	Nagoya Institute of Technology (NITech)	Japan	12.61	19	20.96	-39.8%
175	Nanjing University of Aeronautics and Astronautics (NUAA)	China	12.61	25	6.58	91.5%
176	South University of Science and Technology of China (SUSTC)	China	12.52	31	2.24	458.3%
177	Victoria University of Wellington	New Zealand	12.47	62	24.91	-50%
178	Korea Institute for Advanced Study (KIAS)	South Korea	12.31	45	15.89	-22.5%
179	Kinki University	Japan	12.23	34	9.21	32.9%
180	China Meteorological Administration (CMA)	China	12.19	35	9.93	22.8%
181	Anhui Normal University	China	12.00	14	5.96	101.4%
182	Hong Kong Baptist University (HKBU)	China	11.99	30	12.77	-6.1%
183	University of Toyama	Japan	11.81	28	14.18	-16.7%
184	Physical Research Laboratory (PRL)	India	11.69	41	8.80	32.9%
185	Shizuoka University	Japan	11.68	32	13.95	-16.3%
186	Nanjing Medical University (NJMU)	China	11.64	49	7.27	60%
187	University of Hyogo	Japan	11.62	40	5.32	118.6%
188	Henan University (HENU)	China	11.35	18	12.53	-9.4%
189	Japan Synchrotron Radiation Research Institute (JASRI)	Japan	11.34	68	14.15	-19.8%
190	Zhejiang University of Technology	China	11.10	22	8.03	38.2%
191	Wenzhou University	China	11.06	19	8.05	37.4%
192	Inha University	South Korea	11.04	34	11.21	-1.5%
193	China Pharmaceutical University (CPU)	China	10.87	24	3.88	180.1%
194	University of Delhi (DU)	India	10.83	79	7.71	40.6%
195	QIMR Berghofer Medical Research Institute	Australia	10.83	63	4.28	153.1%
196	Chonnam National University (CNU)	South Korea	10.83	103	5.85	85.2%
197	National Institute of Biological Sciences, Beijing (NIBS)	China	10.79	31	11.73	-8%
198	Niigata University	Japan	10.77	60	12.75	-15.5%
199	Banaras Hindu University (BHU)	India	10.76	21	10.47	2.8%
200	Yamagata University	Japan	10.72	34	7.76	38.3%

TOP INSTITUTIONAL CONTRIBUTORS: LIFE SCIENCES

2014	INSTITUTION	COUNTRY	WFC	ARTICLE COUNT	2012 WFC	2012-2013 CHANGE IN WFC
1	Chinese Academy of Sciences (CAS)	China	155.2200016	420	147.9425515	4.9%
2	The University of Tokyo (UTokyo)	Japan	99.33	262	112.59	-11.8%
3	Kyoto University	Japan	62.04	160	70.86	-12.5%
4	RIKEN	Japan	59.26	201	70.06	-15.4%
5	The University of Queensland (UQ)	Australia	55.69	182	42.16	32.1%
6	Osaka University	Japan	49.95	153	59.94	-16.7%
7	Peking University (PKU)	China	46.51	160	41.55	11.9%
8	Seoul National University (SNU)	South Korea	43.02	119	34.35	25.3%
9	The University of Melbourne	Australia	39.47	183	44.21	-10.7%
10	Monash University	Australia	36.93	120	30.11	22.6%
11	National University of Singapore (NUS)	Singapore	33.45	160	36.72	-8.9%
12	Agency for Science, Technology and Research (A*STAR)	Singapore	30.72	112	30.25	1.6%
13	Nagoya University	Japan	29.84	80	28.69	4%
14	Tsinghua University (TH)	China	27.87	107	27.63	0.9%
15	Shanghai Jiao Tong University (SJTU)	China	27.48	91	20.50	34%
16	Hokkaido University (HU)	Japan	25.94	76	27.86	-6.9%
17	Kyushu University	Japan	24.54	73	25.57	-4%
18	The University of Sydney (USYD)	Australia	24.51	83	28.98	-15.4%
19	Academia Sinica	Taiwan	24.13	60	25.71	-6.1%
20	Zhejiang University (ZJU)	China	23.06	73	16.53	39.5%
21	Sun Yat-sen University (SYSU)	China	21.37	60	11.21	90.5%
22	Tohoku University	Japan	20.12	69	24.25	-17%
23	Chinese Academy of Medical Sciences & Peking Union Medical College (CAMS & PUMC)	China	18.89	67	13.43	40.6%
24	Shandong University (SDU)	China	18.28	40	6.63	175.7%
25	University of Science and Technology of China (USTC)	China	17.30	44	19.07	-9.3%
26	Fudan University	China	17.15	88	21.72	-21%
27	Indian Institute of Science (IISc)	India	16.59	24	9.25	79.3%
28	The University of New South Wales (UNSW)	Australia	16.38	74	20.83	-21.3%
29	Australian National University (ANU)	Australia	15.28	65	17.31	-11.7%
30	Keio University	Japan	15.07	56	19.98	-24.6%
31	University of Chinese Academy of Sciences (UCAS)	China	14.75	91	8.39	75.9%
32	The University of Adelaide	Australia	14.42	51	10.30	40%
33	Nanyang Technological University (NTU)	Singapore	13.93	55	11.57	20.4%
34	The Walter and Eliza Hall Institute of Medical Research (WEHI)	Australia	13.72	53	12.09	13.5%
35	National Institutes of Natural Sciences (NINS)	Japan	13.68	50	15.72	-13%
36	Wuhan University (WHU)	China	12.94	29	15.08	-14.2%
37	Yonsei University	South Korea	12.92	44	11.53	12%
38	Council of Scientific and Industrial Research (CSIR)	India	12.92	26	14.80	-12.7%
39	Beijing Genomics Institute (BGI)	China	12.73	58	15.19	-16.2%
40	The University of Hong Kong (HKU)	China	12.49	46	10.28	21.5%
41	National Taiwan University (NTU)	Taiwan	12.02	38	14.53	-17.3%
42	The University of Western Australia (UWA)	Australia	11.63	78	8.20	41.8%
43	University of Tsukuba	Japan	11.48	37	10.02	14.6%
44	James Cook University (JCU)	Australia	11.45	35	11.30	1.4%
45	Nanjing University (NJU)	China	11.10	27	9.20	20.7%
46	University of Otago	New Zealand	10.99	41	14.46	-24%
47	Pohang University of Science and Technology (POSTECH)	South Korea	10.86	32	6.45	68.4%
48	Huazhong University of Science & Technology (HUST)	China	10.71	42	8.71	22.8%
49	Korea Advanced Institute of Science and Technology (KAIST)	South Korea	10.70	33	17.10	-37.4%
50	Korea University (KU)	South Korea	10.21	38	13.43	-24%

TOP INSTITUTIONAL CONTRIBUTORS: CHEMISTRY

2014	INSTITUTION	COUNTRY	WFC	ARTICLE COUNT	2012 WFC	2012-2013 CHANGE IN WFC
1	Chinese Academy of Sciences (CAS)	China	768.7293226	1,395	679.8902487	13.1%
2	Peking University (PKU)	China	151.32	366	142.68	6.1%
3	Kyoto University	Japan	151.26	237	157.12	-3.7%
4	Nanyang Technological University (NTU)	Singapore	143.06	217	123.90	15.5%
5	The University of Tokyo (UTokyo)	Japan	142.72	227	159.48	-10.5%
6	Zhejiang University (ZJU)	China	125.25	178	86.42	44.9%
7	Nanjing University (NJU)	China	120.27	206	117.34	2.5%
8	Fudan University	China	114.38	186	80.10	42.8%
9	University of Science and Technology of China (USTC)	China	107.51	223	93.78	14.6%
10	Indian Institutes of Technology (IITs)	India	106.58	141	74.77	42.6%
11	Osaka University	Japan	105.69	171	106.33	-0.6%
12	Tsinghua University (TH)	China	101.79	201	92.06	10.6%
13	National University of Singapore (NUS)	Singapore	93.39	177	83.81	11.4%
14	Council of Scientific and Industrial Research (CSIR)	India	90.40	117	79.46	13.8%
15	Lanzhou University (LZU)	China	84.31	118	50.35	67.5%
16	Tohoku University	Japan	81.32	138	62.89	29.3%
17	Jilin University (JLU)	China	77.57	128	73.88	5%
18	Korea Advanced Institute of Science and Technology (KAIST)	South Korea	73.01	132	56.93	28.2%
19	Xiamen University (XMU)	China	71.62	138	59.87	19.6%
20	Sichuan University (SCU)	China	70.75	98	68.45	3.4%
21	Seoul National University (SNU)	South Korea	68.64	111	70.70	-2.9%
22	Nankai University	China	66.08	160	86.00	-23.2%
23	Hunan University (HNU)	China	64.94	85	51.90	25.1%
24	East China University of Science and Technology (ECUST)	China	63.17	105	53.04	19.1%
25	Tokyo Institute of Technology	Japan	60.60	104	63.19	-4.1%
26	Wuhan University (WHU)	China	59.68	90	63.22	-5.6%
27	Indian Institute of Science Education and Research (IISER)	India	58.13	70	44.18	31.6%
28	Soochow University	China	57.60	94	34.75	65.7%
29	Nagoya University	Japan	56.84	107	66.82	-14.9%
30	University of Chinese Academy of Sciences (UCAS)	China	54.75	270	47.89	14.3%
31	Sun Yat-sen University (SYSU)	China	54.67	94	52.10	4.9%
32	East China Normal University (ECNU)	China	52.72	82	41.54	26.9%
33	Shanghai Jiao Tong University (SJTU)	China	50.11	85	45.14	11%
34	Hokkaido University (HU)	Japan	48.56	87	53.72	-9.6%
35	Kyushu University	Japan	43.50	87	38.45	13.1%
36	National Institute for Material Science (NIMS)	Japan	42.64	97	46.34	-8%
37	Agency for Science, Technology and Research (A*STAR)	Singapore	41.91	112	28.20	48.6%
38	Northeast Normal University (NENU)	China	41.59	53	25.65	62.1%
39	Indian Institute of Science (IISC)	India	40.82	54	37.78	8%
40	Dalian University of Technology (DUT)	China	39.58	74	47.16	-16.1%
41	Monash University	Australia	38.91	101	39.02	-0.3%
42	The University of Queensland (UQ)	Australia	38.86	74	23.99	62%
43	RIKEN	Japan	38.43	101	44.57	-13.8%
44	National Tsing Hua University (NTHU)	Taiwan	38.20	67	32.04	19.2%
45	South China University of Technology (SCUT)	China	38.20	71	28.75	32.9%
46	National Taiwan University (NTU)	Taiwan	37.80	70	43.58	-13.2%
47	Yonsei University	South Korea	37.51	79	28.87	29.9%
48	The University of Hong Kong (HKU)	China	36.29	59	39.04	-7%
49	Sungkyunkwan University (SKKU)	South Korea	36.04	80	23.97	50.4%
50	Indian Association for the Cultivation of Science (IACS)	India	35.76	41	38.48	-7.1%

TOP INSTITUTIONAL CONTRIBUTORS: PHYSICAL SCIENCES

2014	INSTITUTION	COUNTRY	WFC	ARTICLE COUNT	2012 WFC	2012-2013 CHANGE IN WFC
1	Chinese Academy of Sciences (CAS)	China	412.10	1,367.00	406.86	1.3%
2	The University of Tokyo (UTokyo)	Japan	202.87	729.00	193.50	4.8%
3	Peking University (PKU)	China	111.85	449.00	105.09	6.4%
4	Tsinghua University (TH)	China	98.15	357.00	87.94	11.6%
5	National University of Singapore (NUS)	Singapore	80.80	171.00	88.74	-8.9%
6	Kyoto University	Japan	77.14	328.00	91.02	-15.3%
7	Tohoku University	Japan	75.61	209.00	96.92	-22%
8	University of Science and Technology of China (USTC)	China	74.12	296.00	71.40	3.8%
9	Nanyang Technological University (NTU)	Singapore	72.88	141.00	71.87	1.4%
10	Seoul National University (SNU)	South Korea	72.26	237.00	66.08	9.4%
11	Nanjing University (NJU)	China	68.04	228.00	64.94	4.8%
12	Osaka University	Japan	67.57	243.00	62.61	7.9%
13	National Institute for Material Science (NIMS)	Japan	67.51	165.00	43.97	53.5%
14	Korea Advanced Institute of Science and Technology (KAIST)	South Korea	58.91	103.00	49.76	18.4%
15	RIKEN	Japan	57.25	228.00	60.42	-5.3%
16	Fudan University	China	57.22	116.00	39.64	44.4%
17	Indian Institutes of Technology (IITs)	India	56.10	132.00	48.41	15.9%
18	National Taiwan University (NTU)	Taiwan	54.67	177.00	46.59	17.3%
19	Tokyo Institute of Technology	Japan	53.49	194.00	35.67	50%
20	Zhejiang University (ZJU)	China	48.69	124.00	64.83	-24.9%
21	Australian National University (ANU)	Australia	48.32	361.00	49.56	-2.5%
22	Indian Institute of Science (IISc)	India	40.55	76.00	35.96	12.8%
23	The University of New South Wales (UNSW)	Australia	40.47	127.00	24.51	65.1%
24	Xi'an Jiaotong University (XJTU)	China	39.97	92.00	32.80	21.9%
25	Nagoya University	Japan	38.73	246.00	35.21	10%
26	Pohang University of Science and Technology (POSTECH)	South Korea	37.32	74.00	33.24	12.3%
27	Agency for Science, Technology and Research (A*STAR)	Singapore	35.01	83.00	31.35	11.7%
28	Shanghai Jiao Tong University (SJTU)	China	34.63	119.00	34.28	1%
29	National Institute of Advanced Industrial Science and Technology (AIST)	Japan	33.43	77.00	42.83	-22%
30	National Tsing Hua University (NTHU)	Taiwan	33.41	115.00	35.70	-6.4%
31	Hong Kong University of Science and Technology (HKUST)	China	33.38	60	22.12	50.9%
32	Sungkyunkwan University (SKKU)	South Korea	30.92	153.00	29.13	6.2%
33	Soochow University	China	29.57	58.00	27.31	8.3%
34	Jilin University (JLU)	China	29.43	60	29.09	1.2%
35	Yonsei University	South Korea	28.17	100	29.67	-5.1%
36	Academia Sinica	Taiwan	26.20	355.00	27.42	-4.5%
37	National Chiao Tung University (NCTU)	Taiwan	25.95	65.00	41.37	-37.3%
38	Huazhong University of Science & Technology (HUST)	China	25.67	69.00	25.42	1%
39	Kyushu University	Japan	25.53	107.00	25.36	0.6%
40	The University of Sydney (USYD)	Australia	25.28	346.00	27.87	-9.3%
41	Korea University (KU)	South Korea	25.01	126.00	29.15	-14.2%
42	Southeast University (SEU)	China	24.87	57.00	20.09	23.8%
43	Hanyang University (HYU)	South Korea	24.40	68.00	24.03	1.6%
44	Monash University	Australia	24.36	151.00	24.94	-2.3%
45	Tata Institute of Fundamental Research (TIFR)	India	22.20	179.00	41.05	-45.9%
46	The University of Hong Kong (HKU)	China	21.86	75.00	25.81	-15.3%
47	Nankai University	China	21.67	53.00	23.56	-8.1%
48	East China Normal University (ECNU)	China	21.32	47.00	16.97	25.6%
49	Ulsan National Institute of Science and Technology (UNIST)	South Korea	20.75	46.00	10.75	93.1%
50	Hokkaido University (HU)	Japan	20.65	54.00	23.26	-11.2%

TOP INSTITUTIONAL CONTRIBUTORS: EARTH AND ENVIRONMENT

2014	INSTITUTION	COUNTRY	WFC	ARTICLE COUNT	2012 WFC	2012-2013 CHANGE IN WFC
1	Chinese Academy of Sciences (CAS)	China	66.45587949	156	68.50123587	-3%
2	The University of Tokyo (UTokyo)	Japan	33.29	69	32.72	1.7%
3	Japan Agency for Marine–Earth Science and Technology (JAMSTEC)	Japan	19.15	58	25.16	-23.9%
4	Australian National University (ANU)	Australia	15.98	47	15.45	3.4%
5	The Commonwealth Scientific and Industrial Research Organisation (CSIRO)	Australia	14.46	44	14.47	-0.1%
6	State Oceanic Administration (SOA)	China	13.53	29	5.18	161.3%
7	Nanjing University (NJU)	China	12.41	29	9.33	33%
8	China Meteorological Administration (CMA)	China	12.00	33	9.76	23%
9	Tohoku University	Japan	10.88	25	12.23	-11%
10	Hokkaido University (HU)	Japan	10.56	25	9.50	11.2%
11	China University of Geosciences (CUG)	China	9.68	24	9.40	2.9%
12	China Earthquake Administration	China	9.17	25	9.50	-3.5%
13	Peking University (PKU)	China	8.97	27	5.61	59.9%
14	Academia Sinica	Taiwan	8.86	25	4.39	101.9%
15	Monash University	Australia	8.35	29	5.91	41.2%
16	National Taiwan University (NTU)	Taiwan	8.22	24	6.30	30.4%
17	University of Tasmania (UTAS)	Australia	8.13	40	4.89	66.4%
18	Kyushu University	Japan	7.98	18	2.72	193.4%
19	The University of New South Wales (UNSW)	Australia	7.91	30	10.91	-27.5%
20	The University of Western Australia (UWA)	Australia	7.67	36	7.85	-2.2%
21	Nagoya University	Japan	7.53	17	5.32	41.5%
22	Tokyo Institute of Technology	Japan	7.32	16	4.07	79.6%
23	Beijing Normal University (BNU)	China	7.22	25	5.76	25.2%
24	Curtin University	Australia	7.12	29	8.19	-13.1%
25	University of Science and Technology of China (USTC)	China	7.05	19	6.52	8.1%
26	Ministry of Earth Sciences (MoES)	India	7.03	13	7.79	-9.8%
27	Ocean University of China (OUC)	China	6.67	17	9.35	-28.6%
28	GNS Science	New Zealand	6.67	18	2.65	151.6%
29	Japan Meteorological Agency	Japan	6.59	20	12.08	-45.4%
30	Council of Scientific and Industrial Research (CSIR)	India	6.44	14	8.42	-23.5%
31	The University of Adelaide	Australia	5.91	10	2.61	126.4%
32	Xiamen University (XMU)	China	5.58	15	1.80	210%
33	The University of Melbourne	Australia	5.42	31	5.38	0.6%
34	Indian Space Research Organisation (ISRO)	India	5.35	7	4.43	20.6%
35	Lanzhou University (LZU)	China	5.16	13	5.18	-0.3%
36	Seoul National University (SNU)	South Korea	5.15	15	8.10	-36.4%
37	University of Chinese Academy of Sciences (UCAS)	China	5.05	27	2.96	70.8%
38	University of Otago	New Zealand	4.89	14	2.98	64.3%
39	National Institute of Advanced Industrial Science and Technology (AIST)	Japan	4.79	13	3.81	25.6%
40	Ehime University	Japan	4.68	14	3.15	48.5%
41	Wuhan University (WHU)	China	4.65	9	5.93	-21.5%
42	James Cook University (JCU)	Australia	4.57	13	5.04	-9.2%
43	Hong Kong University of Science and Technology (HKUST)	China	4.46	5	4.54	-1.7%
44	The University of Auckland	New Zealand	4.41	14	2.90	52%
45	Research Organization of Information and Systems (ROIS)	Japan	4.34	13	4.55	-4.4%
46	Nanjing University of Information Science & Technology (NUIST)	China	4.07	19	6.30	-35.3%
47	Kyoto University	Japan	3.96	11	9.02	-56.1%
48	Korea Institute of Ocean Science and Technology (KIOST)	South Korea	3.73	8	3.48	7.3%
49	Osaka University	Japan	3.65	8	0.65	462.3%
50	National Research Institute for Earth Science and Disaster Prevention (NIED)	Japan	3.63	10	2.27	60.2%

TOP INSTITUTIONAL CONTRIBUTORS IN NATURE AND SCIENCE

2014	INSTITUTION	COUNTRY	WFC	ARTICLE COUNT	2012 WFC	2012-2013 CHANGE IN WFC
1	The University of Tokyo (UTokyo)	Japan	13.21	44	15.55162602	-15.1%
2	Chinese Academy of Sciences (CAS)	China	13.11	58	18.71	-29.9%
3	Kyoto University	Japan	7.44	25	7.48	-0.5%
4	RIKEN	Japan	7.33	32	9.62	-23.8%
5	Peking University (PKU)	China	6.48	28	4.10	58%
6	The University of Queensland (UQ)	Australia	6.44	38	2.42	166%
7	Tsinghua University (TH)	China	4.90	20	5.43	-9.8%
8	National University of Singapore (NUS)	Singapore	3.99	18	2.17	83.6%
9	Nagoya University	Japan	3.62	17	1.35	167.4%
10	Beijing Genomics Institute (BGI)	China	2.84	14	1.78	59.1%
11	Osaka University	Japan	2.74	19	4.69	-41.6%
12	Monash University	Australia	2.55	15	4.82	-47.1%
13	The University of Melbourne	Australia	2.50	24	3.30	-24.3%
14	Zhejiang University (ZJU)	China	2.19	8	1.70	28.9%
15	National Institute of Biological Sciences, Beijing (NIBS)	China	2.11	4	1.12	87.3%
16	The University of Sydney (USYD)	Australia	2.01	17	0.70	189.5%
17	Tohoku University	Japan	1.98	12	2.31	-14.4%
18	Australian National University (ANU)	Australia	1.94	20	2.04	-5.1%
19	The University of Adelaide	Australia	1.93	11	0.38	400.8%
20	National Institute for Material Science (NIMS)	Japan	1.73	7	0.54	219.5%
21	Agency for Science, Technology and Research (A*STAR)	Singapore	1.36	6	2.81	-51.7%
22	James Cook University (JCU)	Australia	1.35	7	1.13	19.4%
23	University of Tasmania (UTAS)	Australia	1.33	9	0.78	71.3%
24	National Institutes of Natural Sciences (NINS)	Japan	1.31	11	1.12	17.1%
25	Academia Sinica	Taiwan	1.28	11	0.73	74.4%
26	Seoul National University (SNU)	South Korea	1.23	8	1.97	-37.6%
27	University of Chinese Academy of Sciences (UCAS)	China	1.20	7	0.50	138.5%
28	The University of Western Australia (UWA)	Australia	1.18	13	0.72	63.6%
29	Ocean University of China (OUC)	China	1.17	3	0.17	600%
30	The University of New South Wales (UNSW)	Australia	1.09	11	1.86	-41.4%
31	The Commonwealth Scientific and Industrial Research Organisation (CSIRO)	Australia	1.07	15	2.88	-62.9%
32	Sungkyunkwan University (SKKU)	South Korea	1.04	6	0.51	102.9%
33	National Tsing Hua University (NTHU)	Taiwan	1.00	1	1.28	-22.1%
34	Hokkaido University (HU)	Japan	0.98	10	0.27	268.7%
35	Huazhong University of Science & Technology (HUST)	China	0.92	1	0.05	1733.3%
36	The Walter and Eliza Hall Institute of Medical Research (WEHI)	Australia	0.89	3	0.85	4.9%
37	National Institute of Water and Atmospheric Research (NIWA)	New Zealand	0.87	3	0	-
38	Yanshan University	China	0.82	1	0.73	11.6%
39	University of Science and Technology of China (USTC)	China	0.82	7	1.69	-51.6%
40	Tokyo Institute of Technology	Japan	0.81	7	1.28	-36.6%
41	Harbin Institute of Technology (HIT)	China	0.80	1	0.07	1020.0%
42	The University of Wollongong (UOW)	Australia	0.80	5	0	-
43	Japan Aerospace Exploration Agency (JAXA)	Japan	0.75	5	0.30	149.5%
44	Massey University	New Zealand	0.71	3	0	-
45	Ibaraki University	Japan	0.70	3	0.34	103.7%
46	Nara Institute of Science and Technology (NAIST)	Japan	0.68	2	0.37	82.7%
47	Kinki University	Japan	0.67	1	0	-
48	China National Genebank (CNGB)	China	0.64	7	0	-
49	Second Military Medical University (SMMU)	China	0.64	3	0	-
50	Korea Institute of Geoscience and Mineral Resources (KIGAM)	South Korea	0.63	2	0	-

Weighted fractional count (WFC) for each institution is shown to two decimal places only. When two or more institutions have the same WFC, their positions are determined by the thousandth place (or beyond).

These results are based on the most recent data available as of 6 February 2015. Owing to continual refinements of the data, the figures in the database are liable to change and might differ to those printed in the supplements.